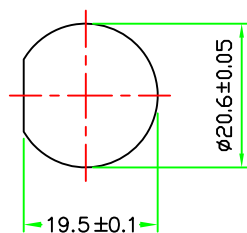
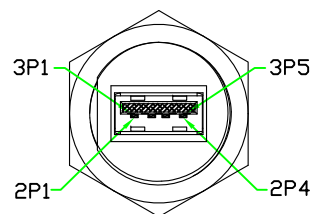


REV	DESCRIPTION	DATE
A	ISSUE	OCT/03/2012

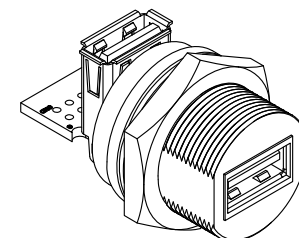
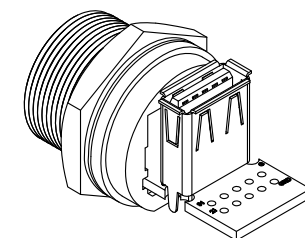
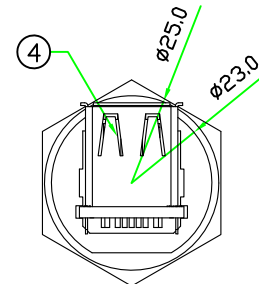
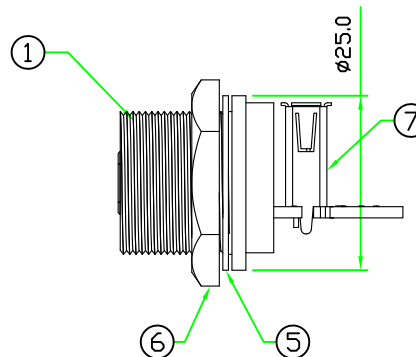
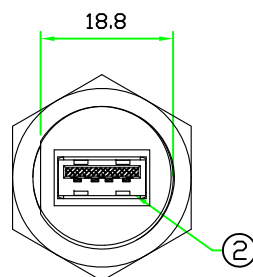
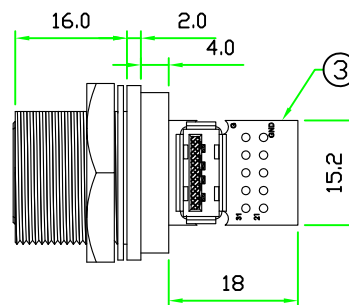
RoHS



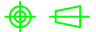
RECOMMENDED
PANEL CUT-OFF



PIN ASSIGNMENT
FRONT VIEW



7	CONNECTOR	USB 3.0 A TYPE FEMALE STRAIGHT TYPE.	BLUE	1	JWX0003
6	HEX NUT	NYLON+GF.	BLACK	1	C-NUT (42-135)
5	GASKET	EPDM.	BLACK	1	CCA-G-EP70
4	GLUE	EPOXY.	BLACK	1	
3	PCB	FR4 . DOUBLE SIDE, 1.6mm THICKNESS.		1	USBAC-PCB
2	CONNECTOR	USB 3.0 A TYPE FEMALE CONNECTOR.	BLUE	1	JWX0002-15U-1
1	BODY	USB A TYPE FEMALE CONNECTOR BODY. NYLON+GF.	BLACK	1	USBAC-P3C (89-135-N3-3)
No.	PART NAME	DESCRIPTION	COLOR	Q'TY	REMARKS

HOLIN®		All Connectors	
		www.allconnectors.eu info@allconnectors.eu Tel. +49 (0)711 / 358 110 20 Fax +49 (0)711 / 358 110 25	
	UNIT: mm	TITLE : USB 3.0 A TYPE FEMALE C SIZE SCREW TYPE CIRCULAR FLANGE PANEL WITH STRAIGHT USB 3.0 A TYPE FEMALE	
SCALE	1:1		
UNLESS OTHERWISE SPECIFIED TOLERANCES:		P/N: USB3AC-P3CSJ	DR. <i>Jack</i>
x ±0.25 xx ± 0.1			CH. <i>Michael</i>
xxx ± 0.05 ANGLE ± 1°x			
REV. A	SHEET 1/1	DWG.NO: USB3AC-P3CSJ	AP.