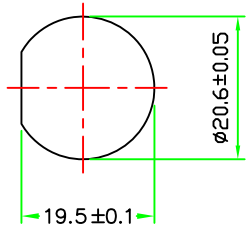
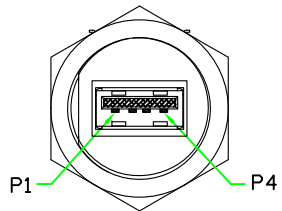


REV	DESCRIPTION	DATE
A	ISSUE	OCT/03/2012

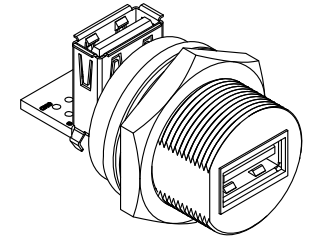
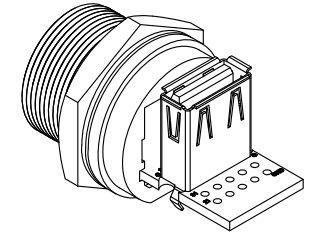
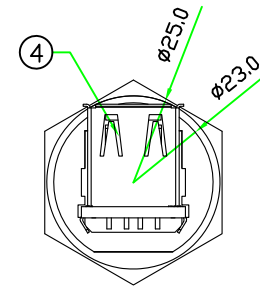
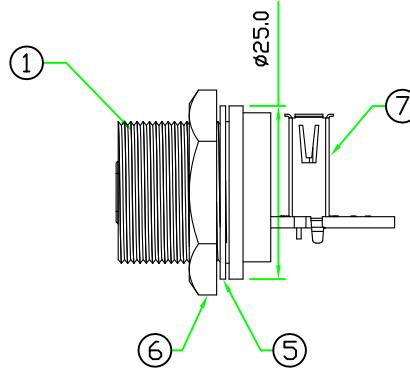
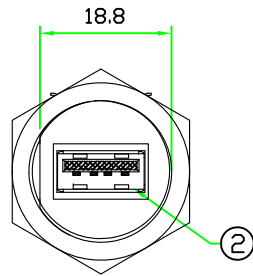
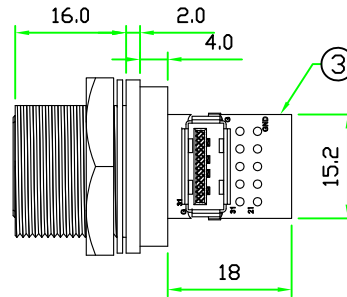
RoHS



RECOMMENDED
PANEL CUT-OFF



PIN ASSIGNMENT
FRONT VIEW



7	CONNECTOR	USB 2.0 A TYPE FEMALE STRAIGHT PCB TYPE.	WHITE	1	JA11-04010B140-R
6	HEX NUT	NYLON+GF.	BLACK	1	C-NUT (42-135)
5	GASKET	EPDM.	BLACK	1	CCA-G-EP70
4	GLUE	EPOXY.	BLACK	1	
3	PCB	FR4 . DOUBLE SIDE, 1.6mm THICKNESS.		1	USBAC-PCB
2	CONNECTOR	USB 2.0 A TYPE FEMALE CONNECTOR R/A TYPE.	WHITE	1	UA91-0401-B100-R
1	BODY	USB A TYPE FEMALE CONNECTOR BODY. NYLON+GF.	BLACK	1	USBAC-P3C (89-135-N3-3)
No.	PART NAME	DESCRIPTION	COLOR	Q'TY	REMARKS

HOLIN®		All Connectors	
UNIT: mm SCALE 1:1		TITLE : USB 2.0 A TYPE FEMALE C SIZE SCREW TYPE CIRCULAR FLANGE PANEL WITH STRAIGHT USB 2.0 A TYPE FEMALE	
UNLESS OTHERWISE SPECIFIED TOLERANCES: X ±0.25 XX ±0.1 XXX ±0.05 ANGLE ± 1°X REV. SHEET		P/N: USB2AC-P3CSJ	DR. <i>jaek</i> CH. <i>Michael</i>
A	1/1	DWG.NO: USB2AC-P3CSJ	AP.