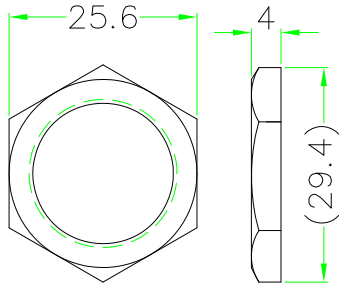


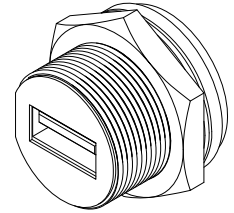
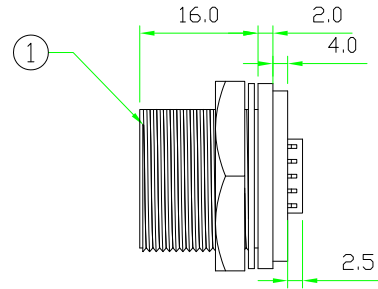
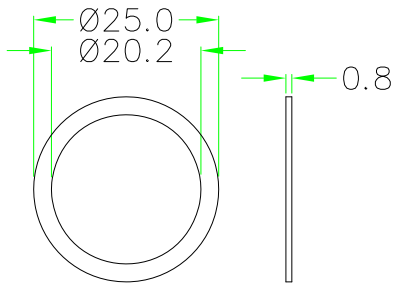
RoHS
IP67

REV	DESCRIPTION	DATE
A	ISSUE	AUG/22/2009
A1	Changing part number	OCT/04/2012

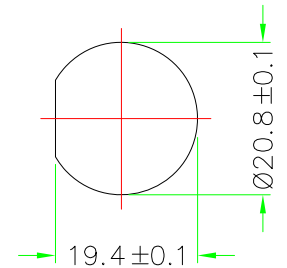
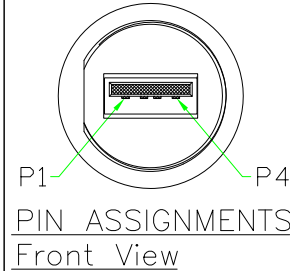
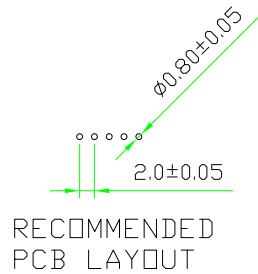
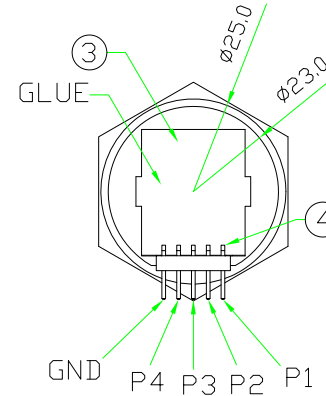
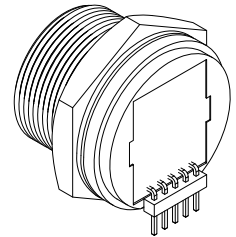
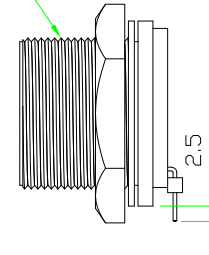
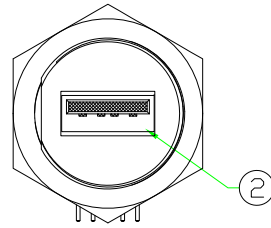
⑥



⑤



13/16"-28UN



6	HEX NUT	NYLON+GF.	BLACK	1	
5	GASKET	EPDM.	BLACK	1	
4	CONNECTOR	PIN HEADER, PITCH 2.0mm, 5P*1ROW R/A TYPE..	BLACK	1	
3	PCB	FR4 . DOUBLE SIDE, 1.0mm THICKNESS.		1	
2	CONNECTOR	USB A TYPE FEMALE CONNECTOR.		1	
1	BODY	USB A TYPE FEMALE CONNECTOR BODY. NYLON+GF.	BLACK	1	
No.	PART NAME	DESCRIPTION	COLOR	Q'TY	REMARKS

HOLIN[®]

Allconnectors

www.allconnectors.eu | info@allconnectors.eu
Tel. +49 (0)711 / 358 110 20 | Fax +49 (0)711 / 358 110 25

UNIT: mm
SCALE 1:1

TITLE : USB A TYPE FEMALE C SIZE
SCREW TYPE CIRCULAR FLANGE PANEL
5 PIN R/A PIN HEADER

UNLESS OTHERWISE SPECIFIED TOLERANCES:
X ±0.25 XX ±0.1
XXX ±0.05 ANGLE ±1°X
REV. SHEET

P/N: **USB2AC-P3CPR**

DR. *jaek*

CH. *michael*

DWG.NO: **USB2AC-P3CPR**

AP.

A 1/1