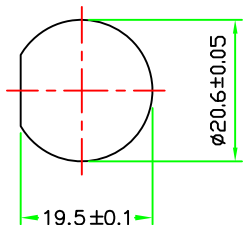
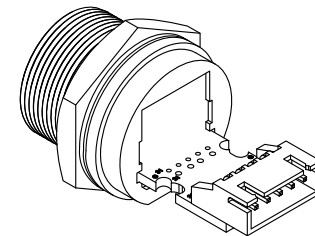
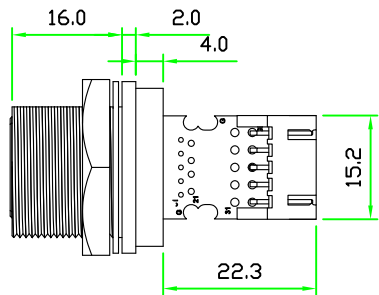
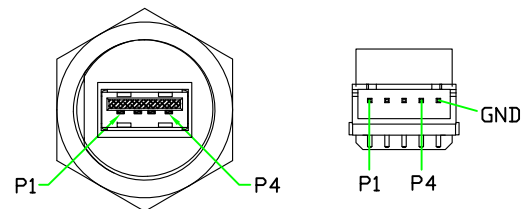
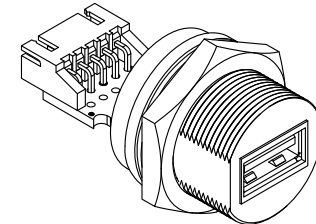
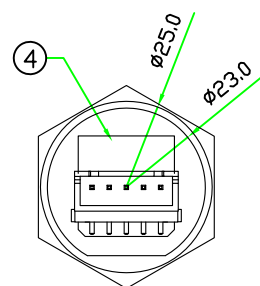
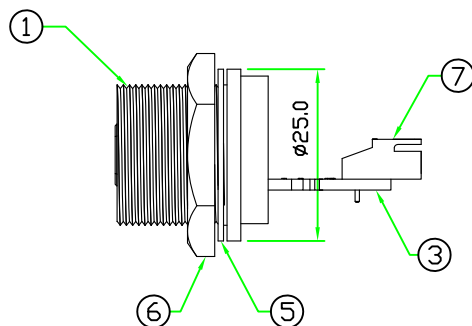
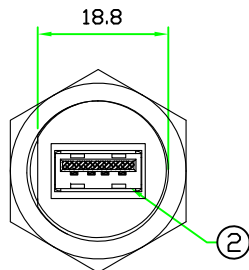


REV	DESCRIPTION	DATE
A	ISSUE	OCT/03/2012

RoHS



RECOMMENDED  
PANEL CUT-OFF



PIN ASSIGNMENT FRONT VIEW

7	WAFER	PITCH 2.5mm 5P*1RAW RIGHT ANGLE WAFER .	WHITE	1	
6	HEX NUT	NYLON+GF.	BLACK	1	C-NUT (42-135)
5	GASKET	EPDM.	BLACK	1	CCA-G-EP70
4	GLUE	EPOXY.	BLACK	1	
3	PCB	FR4 . DOUBLE SIDE, 1.6mm THICKNESS.		1	USBAC-PCB
2	CONNECTOR	USB 2.0 A TYPE FEMALE CONNECTOR.	WHITE	1	UA91-0401-B100-R
1	BODY	USB A TYPE FEMALE CONNECTOR BODY. NYLON+GF.	BLACK	1	USBAC-P3C (89-135-N3-3)
No.	PART NAME	DESCRIPTION	COLOR	Q'TY	REMARKS

**HOLIN®** **All Connectors**  
www.allconnectors.eu | info@allconnectors.eu  
 Tel. +49 (0)711 / 358 110 20 | Fax +49 (0)711 / 358 110 25

UNIT: mm  
 SCALE 1:1

TITLE : USB 2.0 A TYPE FEMALE C SIZE  
 SCREW TYPE CIRCULAR FLANGE PANEL  
 WITH RIGHT ANGLE WAFER

P/N: USB2AC-P3C14  
 DR. *jaek*  
 CH. *Michael*  
 AP.

UNLESS OTHERWISE SPECIFIED TOLERANCES:  
 X ±0.25 XX ± 0.1  
 XXX ± 0.05 ANGLE ± 1°X

REV. A SHEET 1/1  
 DWG.NO: USB2AC-P3C14