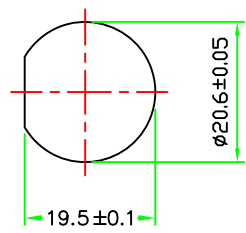
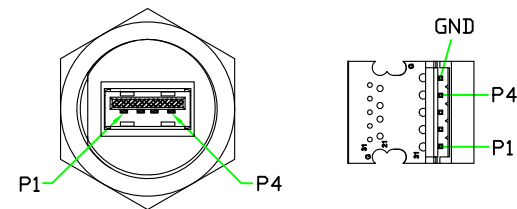
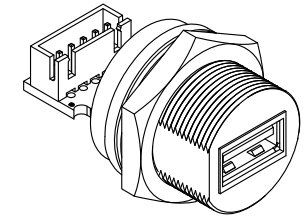
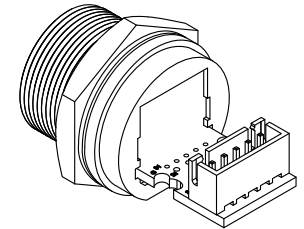
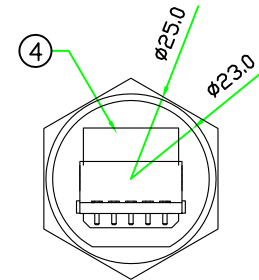
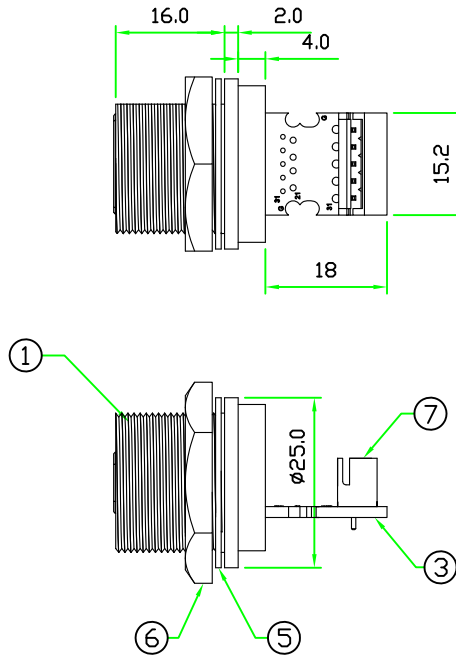
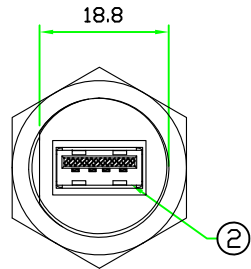


REV	DESCRIPTION	DATE
A	ISSUE	OCT/03/2012

RoHS



RECOMMENDED  
PANEL CUT-OFF



PIN ASSIGNMENT FRONT VIEW

7	WAFER	PITCH 2.5mm 5P*1RAW STRAIGHT WAFER .	WHITE	1	
6	HEX NUT	NYLON+GF.	BLACK	1	C-NUT (42-135)
5	GASKET	EPDM.	BLACK	1	CCA-G-EP70
4	GLUE	EPOXY.	BLACK	1	
3	PCB	FR4 . DOUBLE SIDE, 1.6mm THICKNESS.		1	USBAC-PCB
2	CONNECTOR	USB 2.0 A TYPE FEMALE CONNECTOR.	WHITE	1	UA91-0401-B100-R
1	BODY	USB A TYPE FEMALE CONNECTOR BODY. NYLON+GF.	BLACK	1	USBAC-P3C (89-135-N3-3)
No.	PART NAME	DESCRIPTION	COLOR	Q'TY	REMARKS

HOLIN®		Allconnectors	
		<small>www.allconnectors.eu   info@allconnectors.eu Tel. +49 (0)711 / 358 110 20   Fax +49 (0)711 / 358 110 25</small>	
	UNIT: mm	TITLE : USB 2.0 A TYPE FEMALE C SIZE SCREW TYPE CIRCULAR FLANGE PANEL WITH STRAIGHT WAFER	
SCALE	1:1	P/N:	USB2AC-P3C13
<small>UNLESS OTHERWISE SPECIFIED TOLERANCES: X ±0.25 XX ±0.1 XXX ±0.05 ANGLE ±1°X</small>		DWG.NO:	USB2AC-P3C13
REV.	A	SHEET	1/1
		DR.	JACK
		CH.	Michael
		AP.	