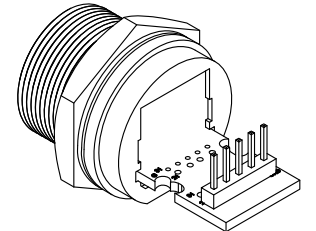
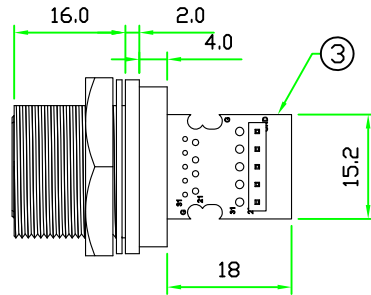
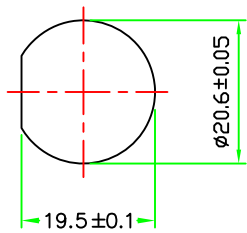


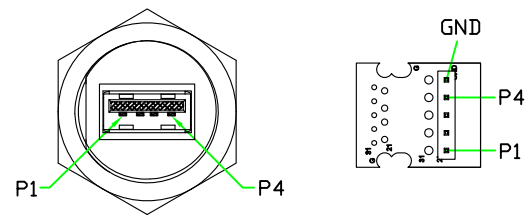
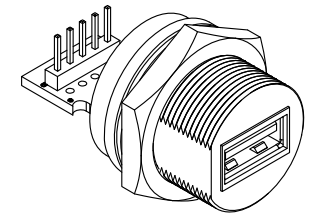
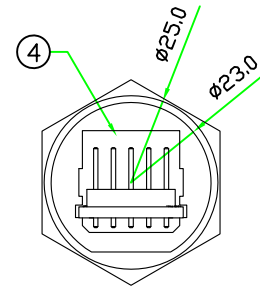
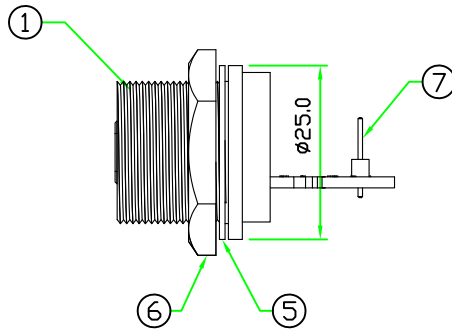
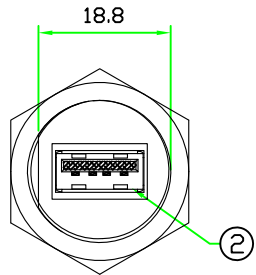
REV	DESCRIPTION	DATE
A	ISSUE	OCT/03/2012



RoHS



RECOMMENDED
PANEL CUT-OFF



PIN ASSIGNMENT FRONT VIEW

7	PIN HEADER	PITCH 2.54mm 5P*1RAW STRAIGHT PIN HEADER .	BLACK	1	
6	HEX NUT	NYLON+GF.	BLACK	1	C-NUT (42-135)
5	GASKET	EPDM.	BLACK	1	CCA-G-EP70
4	GLUE	EPOXY.	BLACK	1	
3	PCB	FR4 . DOUBLE SIDE, 1.6mm THICKNESS.		1	USBAC-PCB
2	CONNECTOR	USB 2.0 A TYPE FEMALE CONNECTOR.	WHITE	1	UA91-0401-B100-R
1	BODY	USB A TYPE FEMALE CONNECTOR BODY. NYLON+GF.	BLACK	1	USBAC-P3C (89-135-N3-3)
No.	PART NAME	DESCRIPTION	COLOR	Q'TY	REMARKS

HOLIN® **Allconnectors**
www.allconnectors.eu | info@allconnectors.eu
Tel. +49 (0)711 / 358 110 20 | Fax +49 (0)711 / 358 110 25

	UNIT: mm	TITLE : USB 2.0 A TYPE FEMALE C SIZE SCREW TYPE CIRCULAR FLANGE PANEL WITH STRAIGHT PIN HEADER
SCALE	1:1	
UNLESS OTHERWISE SPECIFIED TOLERANCES: X ±0.25 XX ± 0.1 XXX ± 0.05 ANGLE ± 1°X		P/N: USB2AC-P3C11 DR. <i>jaeck</i> CH. <i>Michael</i>
REV. A	SHEET 1/1	
DWG.NO: USB2AC-P3C11		AP.