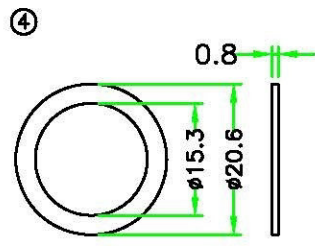
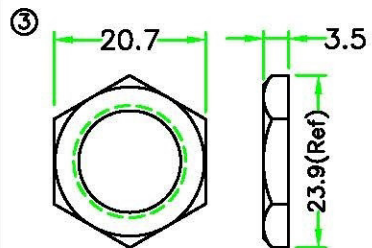
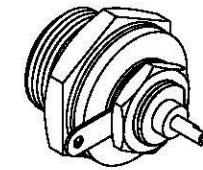
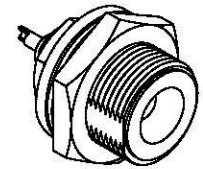
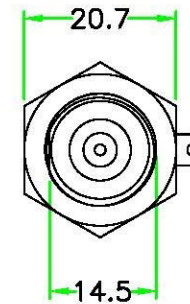
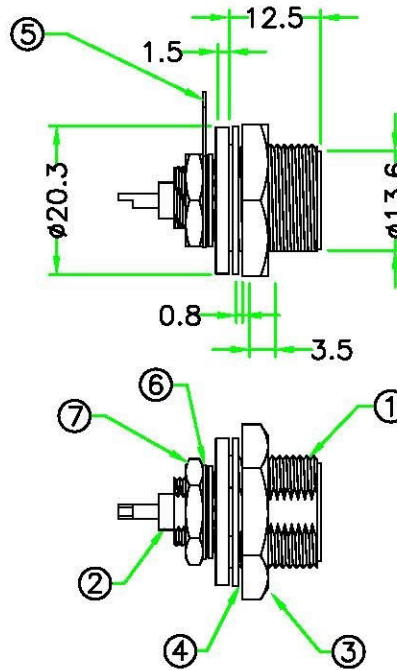
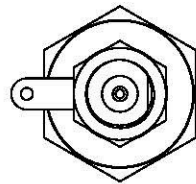


RECOMMENDED
PANEL CUT-OFF

IP67
RoHS



7	HEX NUT	STEEL. NICKEL PLATED.		1	
6	WASHER	STEEL. NICKEL PLATED.		1	
5	GROUND TAG	STEEL. NICKEL PLATED.		1	
4	GASKET	EPDM.	BLACK	1	CBA-G
3	HEX NUT	NYLON+GF.	BLACK	1	CBA-HNUT (42-136)
2	BNC	BNC JACK.		1	WJ-7031
1	BNC INSERT	Panel Connector Insert, NYLON+GF.	BLACK	1	
No.	PART NAME	DESCRIPTION	COLOR	QTY	REMARKS

REV.	DESCRIPTION	DATE
A	ISSUE	Apr/19/2013
B	Add washer & nut , and change P/N.	Jul/31/2013



UNIT: mm

SCALE 1:1

UNLESS OTHERWISE SPECIFIED TOLERANCES:
X ±0.25 XX ±0.1
XXX ±0.05 ANGLE ±1°X
REV. SHEET

B 1/1

Allconnectors

www.allconnectors.de
Tel.: 0049 722 7039505
70/84 Filderstadt - Germany

info@allconnectors.de
Fax: 0049 722 7039504
Kellernastr. 25

TITLE : Circular B Size BNC FEMALE PIN
Screw Type Round Flange Solder Bucket Pin

P/N: CBNCB-P3CS

DWG.NO: CBNCB-P3CS

DR. jaex

CH. ERJE

AP.