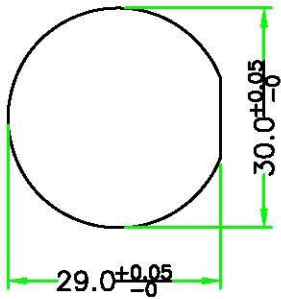
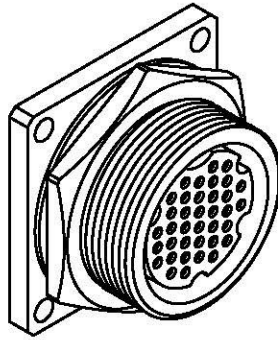


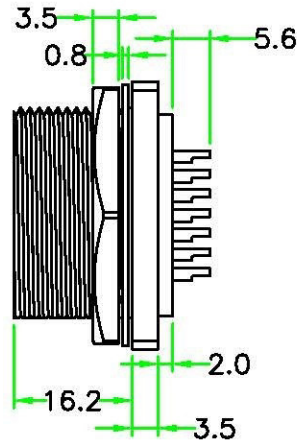
REV.	DESCRIPTION	DATE
A	ISSUE	Feb/06/2012



RECOMMENDED  
PANEL CUT OFF



**RoHS**  
**IP67**



**NOTES:**

**1. ELECTRICAL CHARACTERISTICS:**

CURRENT RATING: 2A

CONNECTOR TEMPERATURE RANGE: -40°C TO +105°C

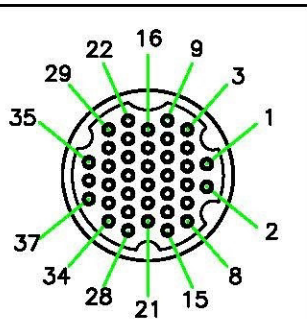
DIELECTRIC WITHSTANDING VOLTAGE:

500V AC FOR ONE MINUTE

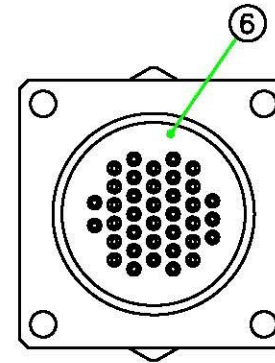
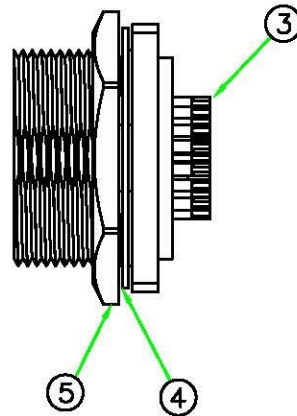
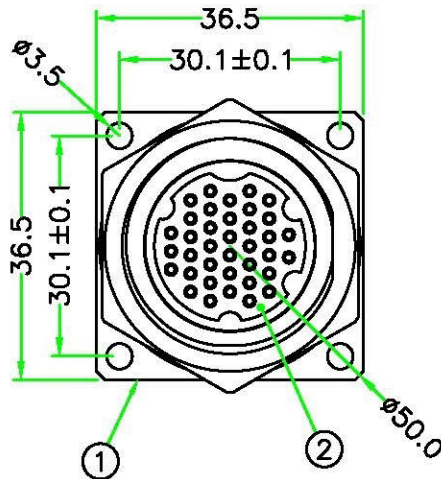
**2. HOW TO ORDER: CEN-M337QS**

31 - 37PIN

N - CURRENT RATING 2A



PIN ASSIGNMENT  
FRONT VIEW



No.	PART NAME	DESCRIPTION	COLOR	QTY	REMARKS
6	Glue	Glue.	Black	1	
5	Hex Nut	Brass. Nickel Plated.		1	CEA-MHNUT-TPK (B)
4	Gasket	EPDM.	Black	1	C16-G
3	Contact	Brass. 6u" Gold Plated. Solder Cup.		37	CBAF-1.0SPL24.5 (A)
2	Connector Insert	Nylon + GF.	Black	1	CEN-37FM-S (45-135-N7-1)
1	Metal Housing	Brass. Nickel Plated.		1	CEA-MH-RPQ(A)

		<small>www.allconnectors.de Tel.: 0049 711 7009202 Z/211 Ubersiedl - Germany</small>		<small>info@allconnectors.de Fax: 0049 711 7009204 Kellernstr. 25</small>	
	UNIT: mm	<b>TITLE :</b> Circular E Size 37P Male Connector Female Pin Screw type Square Flange Solder Bucket connector			
<b>SCALE</b>	1:1	<b>P/N:</b> CEN-M337QS		<b>DR. Jack</b> <b>CH. STANLEY</b>	
<b>UNLESS OTHERWISE SPECIFIED TOLERANCES:</b> X ±0.25 XX ±0.1 XXX ±0.05 ANGLE ±1°X		<b>DWG.NO:</b> CEN-M337QS		<b>AP.</b>	
REV. A	SHEET 1/1				