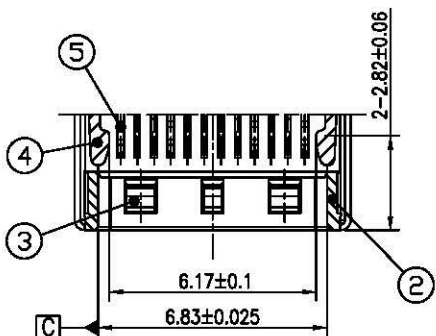
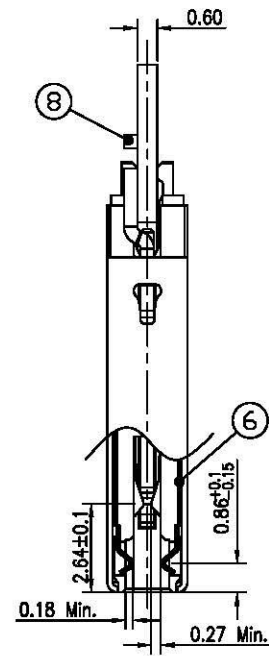
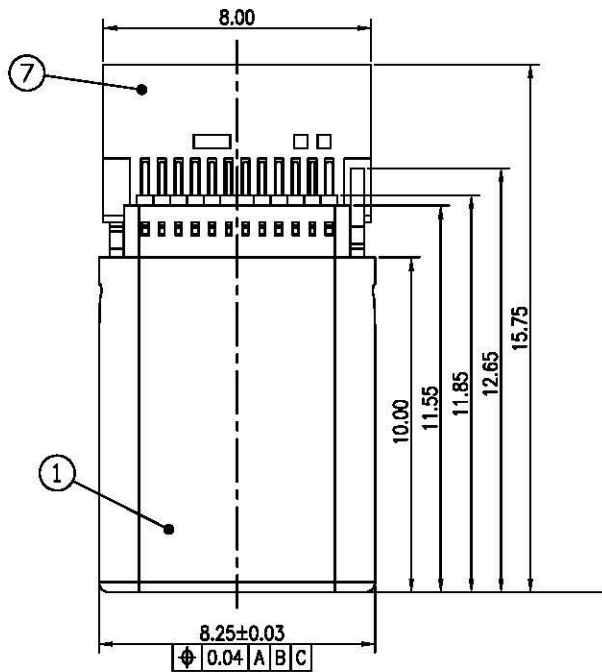
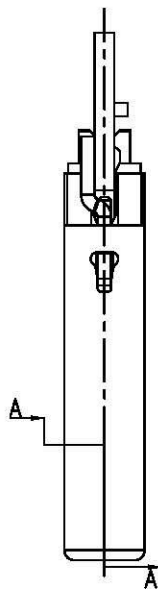
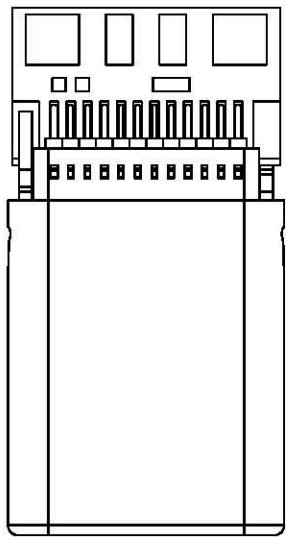
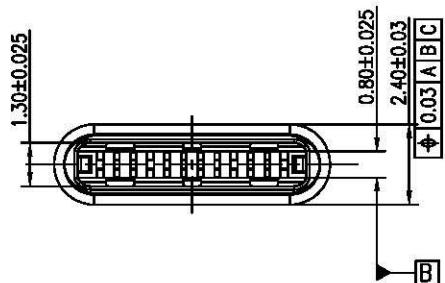


| | | | | |
|------|------------|---------|--------------|----------|
| REV. | DATE | ECN NO. | MODIFICATION | APPROVER |
| A | 2016/08/23 | / | NEW | Vicky |



Section A-A



| 8 | Resistance | 1 | 0402 10KΩ ±1 1/16W |
|-----|-------------|------|---|
| 7 | PCB | 1 | FR-4, Green solder liquid photosensitive ink, white text |
| 6 | Mylar | 2 | KP006-D |
| 5 | TML | 12 | Copper Alloy, Au plated on contact area, and plated Au on solder tail, plated Ni all over |
| 4 | Lock Spring | 1 | Stainless Steel, Ni plated all over |
| 3 | EMC Spring | 2 | Stainless Steel, Ni plated all over |
| 2 | HSG | 1 | Hi-Temp Plastic, Black, UL 94V-0 |
| 1 | Shell | 1 | Stainless Steel, Ni 50u" all over |
| No. | Part Name | Q'ty | Description |

NOTE:

- 1.ELECTRICAL CHARACTERISTICS;
 - 1.1 Contact resistance:40mΩ max.
 - 1.2 Dielectric withstanding voltage:100V AC.
 - 1.3 Insulation resistance: 100MΩ min.
 - 1.4 Operating temperature:-45°C~+85°C.
- 2.MECHANICAL CHARACTERISTICS;
 - 2.1 Insertion force:5~20N.
 - 2.2 Extraction force:8~20N.
 - 2.3 Durability mandatory:10000 cycles.

| | | | | | | | | | |
|-------------------|-------|-------------|--------|----|----------|-------------------|-----------------------------------|--|--|
| GENERAL TOLERANCE | | | UNITS | mm | NAME: | USB | | | |
| SELECT | ✓ | | MAT'L | | PART NO: | USB624MC-E2021403 | | | |
| ON. | TOL | 1 2 3 | FINISH | | APPD: | Jason | TITLE:USB 3.1 24P MALE C TYPE 夹板式 | | |
| X.XXX | ±0.03 | ±0.05 ±0.15 | Q'TY | | CHKD: | Vicky | DWG NO. A03441 | | |
| X.XX | ±0.05 | ±0.13 ±0.25 | | | DR: | Cmy | SCALE SHEET REV | | |
| X.X | ±0.10 | ±0.25 ±0.50 | | | | | 1:1 1/1 A | | |
| X. | ±0.20 | ±0.38 ±1.00 | | | | | | | |
| ANGLE | ±2' | | | | | | | | |