

SWITCH CIRCUIT

MATERIAL AND FINISH AS BELOW

WHEN CARD IS EJECTED WHEN CARD IS INSERTED

A	Housing	LCP UL94V-0 Black	E
B	Contact	Brass C2680, Contact Area: Gold Flash	F
C	Shell	Stainless Steel SUS304, Nickel Plating	G
D			H

SPECIFICATION:

1. ELECTRICAL

- 1.1 Current Rating: Signal(Pin2,3,4):1.0A
Power(Pin1,5):1.8A
- 1.2 Voltage Rating: 100V AC
- 1.3 Contact Resistance: 50mΩ
- 1.4 Insulation Resistance: 1000MΩ
- 1.5 Dielectric Withstanding Voltage: 100VAC

2. MECHANICAL

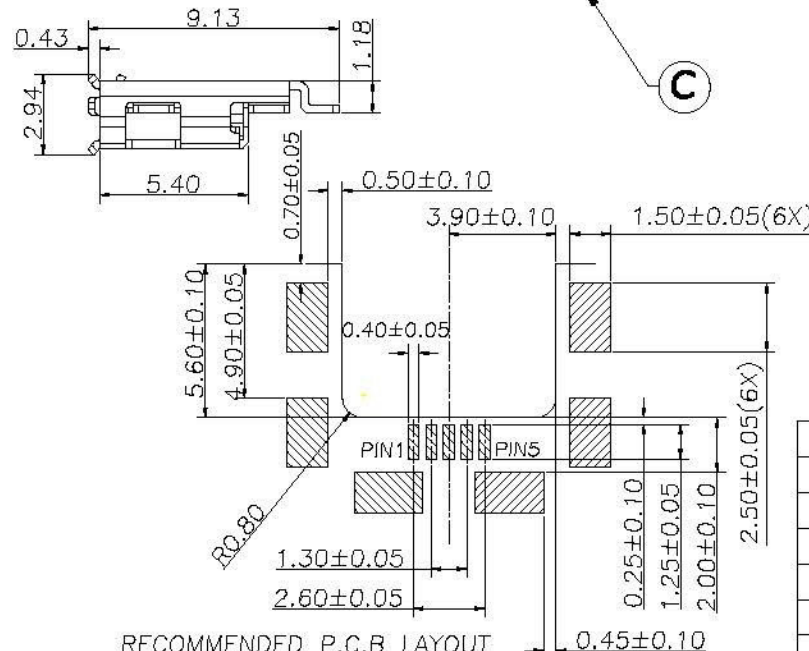
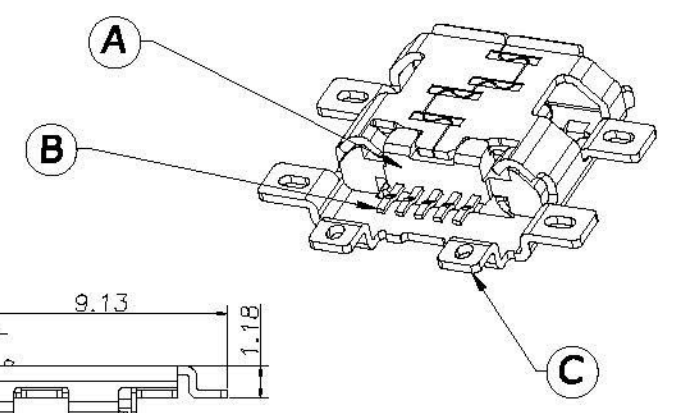
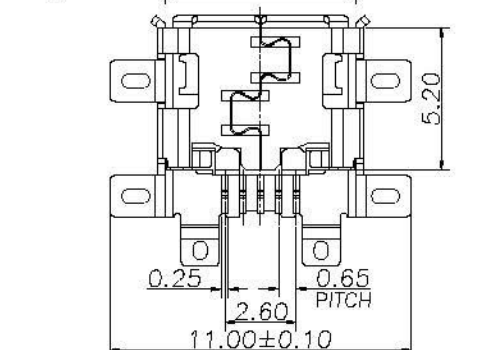
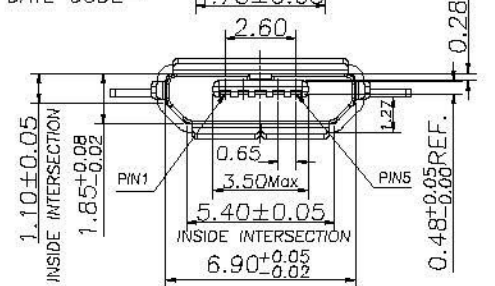
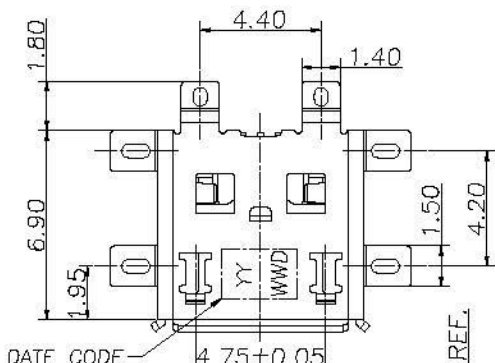
- 2.1 Durability: 10000 Cycle
- 2.2 Insertion Force: 35N max.
- 2.3 Extraction Force: 8~20N max.

3. ENVIRONMENTAL

- 3.1 Operating temperature range: -20℃~+85℃
- 3.2 Storage temperature range: -40℃~+85℃

4. SOLDER ABILITY

- 4.1 Recommended IR Reflow Temperature: 260℃



P1	P2	P3	P4	P5	P6	P7	P8	P9	P10	P11	P12
PIN ASSIGNMENT											

207E-BA00-RA1	Micro USB B Middle Board Mount Type 1.27mm, Gold Flash
PRODUCT NO.	DESCRIPTION

UNLESS OTHERWISE SPECIFIED TOLERANCE			
ANGLES	ANG.		
LINEAR	0.	±0.3	
	0.00	±0.25	
SCALE	AS SHOWN	UNIT: mm	
DRAWN	Willis	2012/10/31	DRAWN NAME: Micro USB B Receptacle Middle Board Mount Type
CHECKED	Angel	2012/10/31	
APPROVED	Ken	2012/10/31	
PRODUCT NO.	207E-BA00-RA1		PRODUCT NO. 207E-BA00-RA1 FILE NAME 207E-BA00-RA1_B_1
REV.	1.0		

REV.	DESCRIPTION	DATE	REV.	DESCRIPTION	DATE	SIZE A4	REV. 1.0	FILE NAME	207E-BA00-RA1_B_1
1			4						