

Technical Data:

Material:

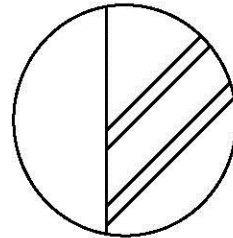
- Contact(metal housing): Brass Machined
- Terminal screw: Steel galvanized and chromated or Nickel plater or Tin plated (standard)(optian)
- Solder Pin: Brass with Tin plated
- Insulator body(housing): Polyamide(Glass filled){UL 94V-0}

Electrical

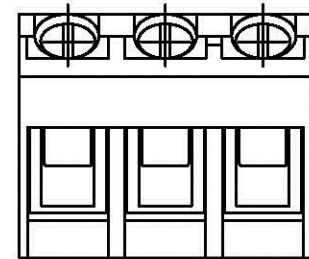
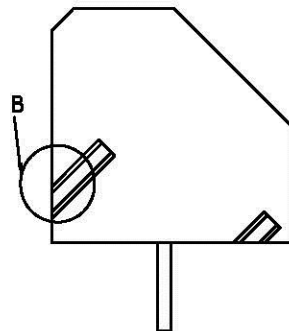
- Voltage rating: 300V
- Current rating: 10 Amps/way max
- Contact resistance: 20mΩ(max)
- Insulation resistance: 5000MΩ/1000V
- Withstanding Voltage: 1500VAC(1min) Test time=60sec/1pcs
- Wire range: 12-22AWG

Mechanical:

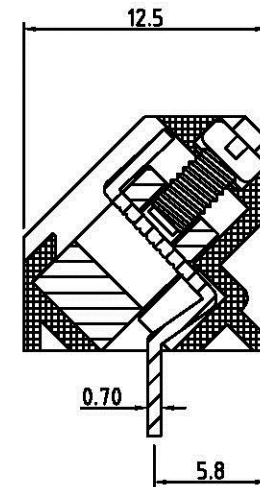
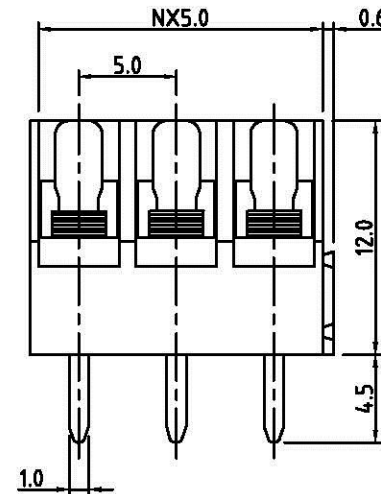
- Torque: 4kgf.cm
- perating temperature: -33°C to +120°C
- Soldring reliability:
Test temperature= 250°C±10°C
5 seconds max
- Safety approval deta: 



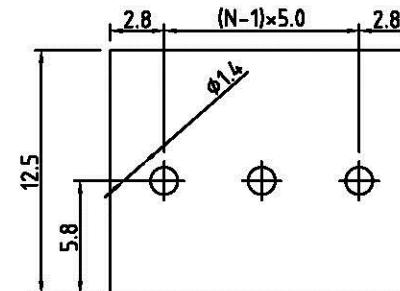
DETTALL B (3/1)



N=Number of contacts



P.C.B. LAYOUT



TBH050-A12BK-xx-LF
 BK:BLACK LEADFREE

RoHS Compliant

All Connectors

www.allconnectors.de info@allconnectors.de
 TEL: 0049 711 7000503 FAX: 0049 711 7000504
 70734 Rillesstadt - Germany Kettenstr. 25

PART NO. TBH050-A12-xx

DWG NO. TBH050-A12-xx

CHECKED BY CY

FILE NO.

DRAWING BY

TOLERANCES ARE

.X ± 0.3
 .XX ± 0.1
 .XXX ±
 AWG

DESCRIP TION:

UNIT / mm

SCALE 1:1

PROJECTION



AREA

REVISIONS

HK

DATE