

Technical Data:

Material:

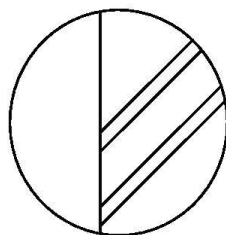
- Contact(metal housing): Brass Machined
- Terminal screw: Steel galvanized and chromitized
or Nickel plater or Tin plated (standard)(optian)
- Solder Pin: Brass with Tin plated
- Insulator body(housing): Polyamide(Glass filled)(UL 94V-0)

Electrical

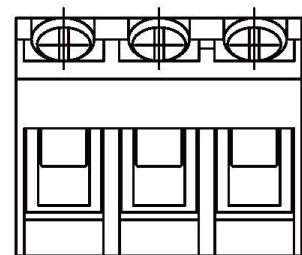
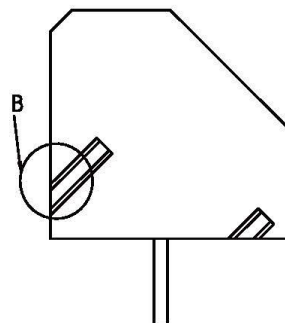
- Voltage rating: 300V
- Current rating: 10 Amps/way max
- Contact resistance: 20mΩ(max)
- Insulation resistance: 5000MΩ/1000V
- Withstanding Voltage: 1500VAC(1min) Test time=60sec/1pcs
- Wire range: 12-22AWG

Mechanical:

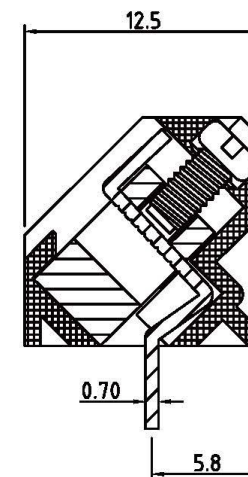
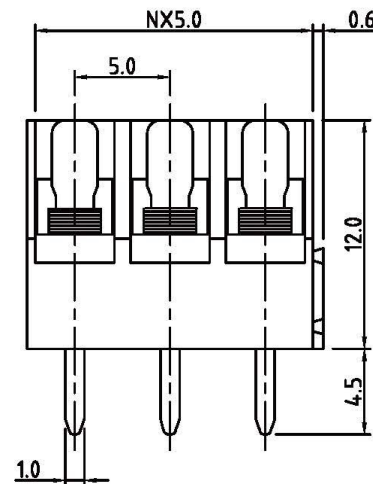
- Torque: 4kgf.cm
- operating temperature: -33°C to +120°C
- Soldering reliability:
Test temperature= 250°C±10°C
5 seconds max
- Safety approval deta: 



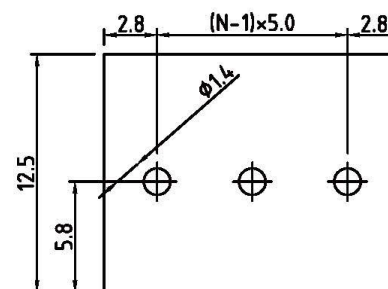
DETTAL B (3/1)



N=Number of contacts



P.C.B. LAYOUT



All Connectors

www.allconnectors.de info@allconnectors.de
Tel.: 0049 711 7009503 Fax: 0049 711 7009504
70794 Filderstadt - Germany Kettenerstr. 25

RoHS Compliant

DRAWING BY CY
CHECKED BY GENIUS
UNIT/ mm SCALE 1 : 1
DATE
SIZE A4

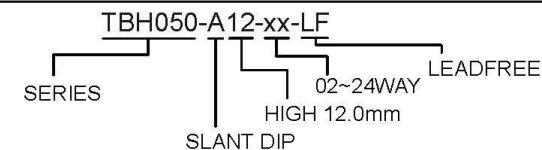
TOLERANCES ARE

X ±
.X ±
.XX ±
.XXX ±
ANG ±

PJECTION 



ORDER INFORMATION



DESCRIPTION: