


Technical Data:

Material:

- Contact(metal housing): Phosphor bronze
- Surface of solder tail: Tin plated
- Insulator body(housing): Polyamide(Glass filled)(UL94V-0)

Electrical

- Voltage rating: 600VAC
 - Current rating: 2 Amps/way max
 - Contact resistance: 20mΩ(max)
 - Insulation resistance: 1000MΩ min.
 - Wire range: 18AWG
- Mechanical:
- Wire retention force: 5kg
 - Operating temperature: -10°C to +70°C
 - Test temperature= 250°C 5 seconds max.

Safety approval data: 

RoHS Compliant

TOLERANCES ARE

All Connectors

DRAWING BY CY

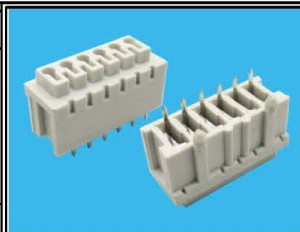
X ±
X ±
.XX ±
.XXX ±
ANG ±

CHECKED BY GENIUS

UNIT/ mm SCALE 1:1

DATE

SIZE A4 PROJECTION 



ORDER INFORMATION

WT45-DP-06-LF
SERIES | LEADFREE
06 WAY
POST
DIP 180°

DESCRIPTION:

www.allconnectors.de

info@allconnectors.de

Tel.: 0049 711 7009503

Fax: 0049 711 7009504

70794 Filderstadt - Germany

Kettenerstr. 25