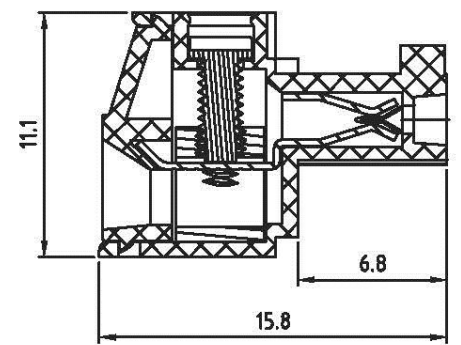
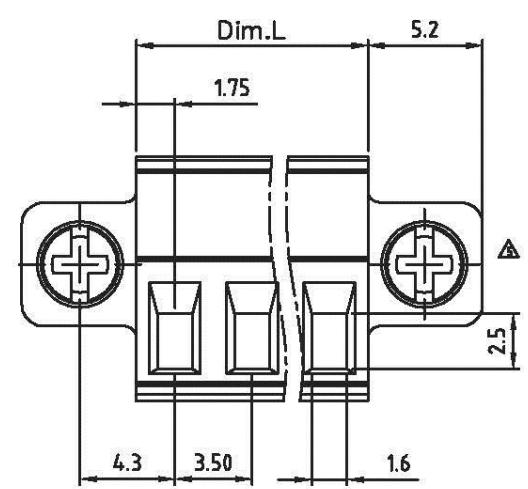


Dim.L = N x 3.5
 Dim.B = (N-1) x 3.5
 N= number of poles

poles Dim.	2P-6P	7P-12P	13P-18P	19P-24P
Dim.L	±0.15	±0.20	±0.25	±0.30
Dim.B	±0.10	±0.15	±0.20	±0.25



Material

- Terminal body
- (metal housing): Brass(CuZn)
- Terminal screw: Steel Zinc plating "-" slot type
- With flange screw : steel M2.5 Zinc plating "+/-" slot type
- Wire guard: PhBz ,Tin plated
- Insulator (housing): Thermoplastic (UL94V-0)

Electrical c ULus/CSA/VDE

- Voltage rating: 300VAC/125VAC/125VAC
- Current rating: 10A/8A/10.5A
- Wire range: 1.5mm
- Solid wire(AWG): 16-26/16-26
- Stranded wire(AWG): 16-26/16-26
- Torque: 3.0Lb-In/3.5kgf.cm/0.2Nm
- Screw: M2
- Wire strip length: 6-7mm
- Withstanding Voltage: 1.6KV/1.6KV/2.5KV
- Operating temperature: -40°C to +115°C
- Safety Approval:



TBH035-SWCF-xx-LF
 LEADFREE
 RoHS Compliant

Allconnectors

www.allconnectors.de
 Tel.: 0049 711 7009503
 70794 Filldorfstadt - Germany

info@allconnectors.de
 Fax: 0049 711 7995504
 Kottmeierstr. 25

PART NO. TBH035- SWCF-xx		CHECKED BY CY		TOLERANCES ARE .X ± 0.2 .XX ± .XXX ± AWG	DESCRIPTION:				
DWG NO. TBH035- SWCF-xx		DRAWING BY							
FILE NO.		PROJECTION		AREA	REVISIONS	HK	DATE		
UNIT / mm	SCALE 1:1								