

RECOMMENDED PC BOARD REQUIREMENTS
(COMPONENT SIDE OF BOARD SHOWN)

DESIGN UNITS <input checked="" type="checkbox"/> mm <input type="checkbox"/> INCH		NAME: ATCA POWER FEMALE ASSEMBLY		Allconnectors	
GENERAL TOLERANCES: (UNLESS SPECIFIED)		PART NO: R-806F011*00***		TITLE: CUSTOMER DWG. C	
	mm	INCH	APPD: Alan 7/3/08		DWG. NO: 010-0000-489
4 PLACE	± **	±. **	CHKD: Seawen 7/3/08		
3 PLACE	± 0.10	±. **	DRAWN: Lia 7/3/08		
2 PLACE	± 0.20	±. **			
1 PLACE	± 0.30	±. **			
ANGULAR:	X° ± 1°	.X° ± **			

A	***	RELEASE	7/3/08	LIA	ALAN
REV.	ECN. NO.	DESCRIPTION	DATE	DRAWN	APPD

1 2 3 4 5 6 7 8

A

B

C

D

E

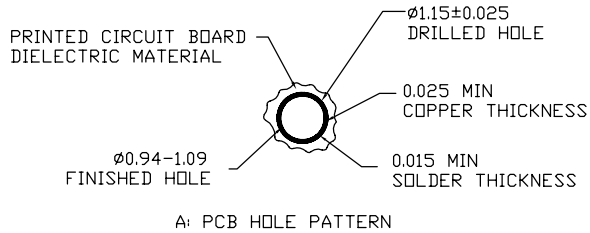
A

B

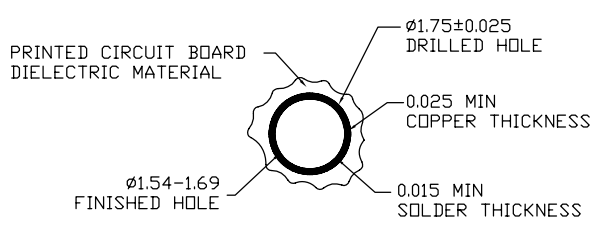
C

D

E



A: PCB HOLE PATTERN



B: PCB HOLE PATTERN

Notes:

- 1.Materials And Finish:
 Insulator: High-Temperature Thermoplastic, UL94V-0
 Power Contacts: Copper alloy.
 Signal Contacts: Copper alloy.
 - 2.Electrical Characteristics
 Insulation Resistance --- ≥ 5 G ohms.
 Initial Contact Resistance :
 Power Contact ----- 3.0 Milliohms max.
 Signal Contact ----- 8.5 Milliohms max.
 Voltage Proof
 Pin 1-16: 1000 Vr.m.s.
 Pin 17-34: 2000 Vr.m.s.
 Current Carrying Capacity
 Signal pins: 1A.
 Power pins: 16A.
 - 3.PCB Thickness-Minimum:2.00mm Nominal.
 -Maximum:5.00mm Nominal.
 - 4.Positions 1,2,3,4 Are Not Populated
 And Reserved For Future Use.
 - 5.RoHS Directive compliance.
 - 6.Press-fit Part of Contacts Are Patent Protected.
- Finish: plating gold over nickel on entire area.
 Finish: plating gold on mating area, and matte tin in tail area. All over nickel on entire area.

R - 8 0 6 F 0 1 1 * 0 0 * * *

CONTACT PLATING		
Code	Plating Description	Finish
7	LEVEL 3	<input type="checkbox"/> 7
2	LEVEL 2	<input type="checkbox"/> 7
3	LEVEL 1	<input type="checkbox"/> 7
4	LEVEL 3	<input type="checkbox"/> 8
5	LEVEL 2	<input type="checkbox"/> 8
6	LEVEL 1	<input type="checkbox"/> 8

CONTACT POSITION	
Code	Definition
340	34-4 PIN (EXCEPT POSITIONS 1~4)
220	22 PIN (EXCEPT POSITIONS 1~4,17~24)
341	34 PIN (FULL LOADED)

DESIGN UNITS <input checked="" type="checkbox"/> mm <input type="checkbox"/> INCH	
GENERAL TOLERANCES: (UNLESS SPECIFIED)	
	mm INCH
4 PLACE	± **. ±. **
3 PLACE	± 0.10 ±. **
2 PLACE	± 0.20 ±. **
1 PLACE	± 0.30 ±. **
ANGULAR:	X° ± 1° X° ± **

NAME: ATCA POWER FEMALE ASSEMBLY
PART NO: R-806F011*00***
APPD: Alan 7/3/08
CHKD: Seawen 7/3/08
DRAWN: Lia 7/3/08

Allconnectors		
TITLE: CUSTOMER DWG.	C	
DWG. NO: 010-0000-489		
SCALE: 1/1	SHEET: 2/2	REV.: A

A	***	RELEASE	7/3/08	LIA	ALAN
REV.	ECN. NO.	DESCRIPTION	DATE	DRAWN	APPD