



# SP86

## Illuminated Snap Acting Pushbutton Switch



### SPECIFICATIONS

CIRCUIT	: SPDT
CURRENT RATING	: 12mA
VOLTAGE RATING	: 24 VDC
TEST VOLTAGE	: 150V
CONTACT RESISTANCE	: 50 mΩ Max (initial)
INSULATION RESISTANCE	: 100 MΩ min.
OPERATING FORCE	: 170gf ± 50gf
TOTAL TRAVEL	: 2.5mm ± 0.5mm
OPERATING LIFE	: 500,000 cycles min.
SOLDER SPECIFICATION	: 260 °C for 3 seconds
FUNCTION	: Momentary
OPERATING TEMPERATURE	: -10 °C ~ +60 °C

INDEX

TOGGLE

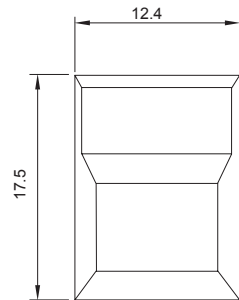
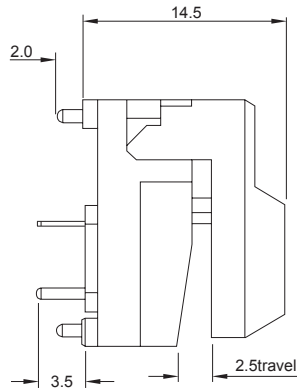
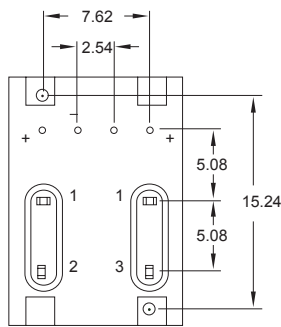
ROCKER

SLIDE

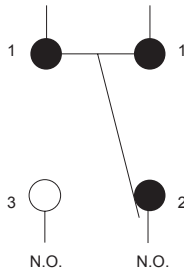
PUSHBUTTON

DIP

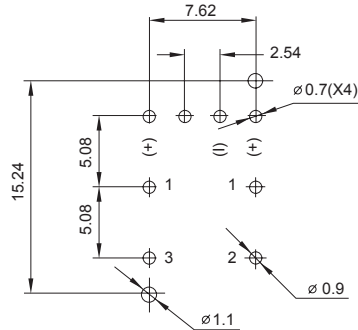
TACT



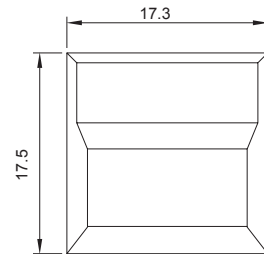
(SP86-A)



SPDT CONTACT CONFIGURATION



P.C.B. Mounting Holes



(SP86-B)

### HOW TO ORDER

S P 8 6

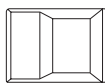
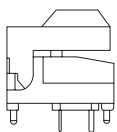
CAP STYLES

CAP COLORS

LEFT LED

RIGHT LED

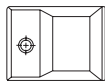
RoHS code



A1



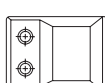
B1



A2



B2



A3



B3

- 1 = RED
- 2 = YELLOW
- 3 = GREEN
- 4 = WHITE
- 5 = BLACK
- 6 = ORANGE
- 7 = BLUE
- 9 = GREY
- 10 = TRANSPARENT

- LED COLORS
- 0 = WITHOUT LED
  - 1 = RED
  - 2 = YELLOW
  - 3 = GREEN
  - 7 = BLUE

H = RoHS Compliant