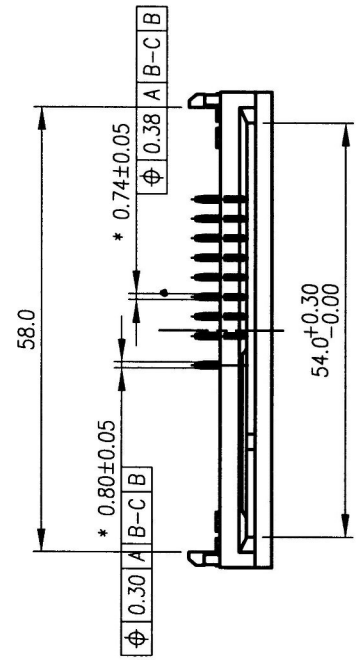
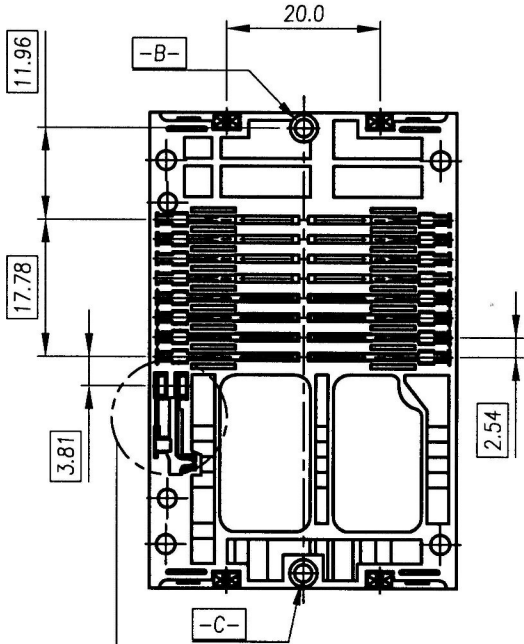
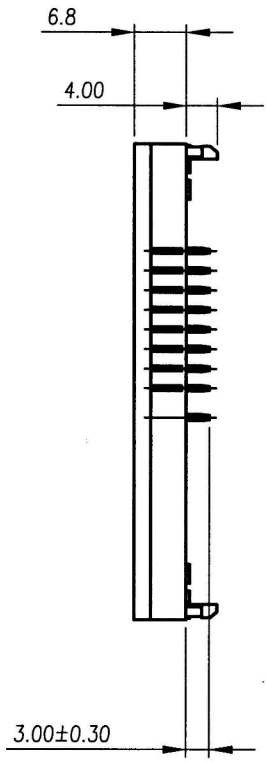
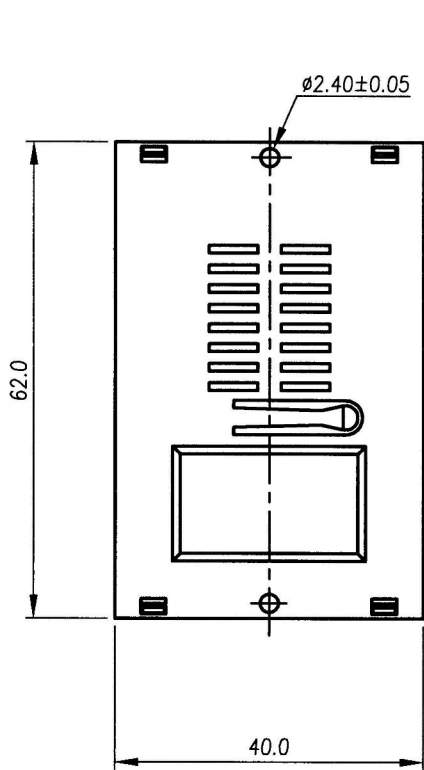
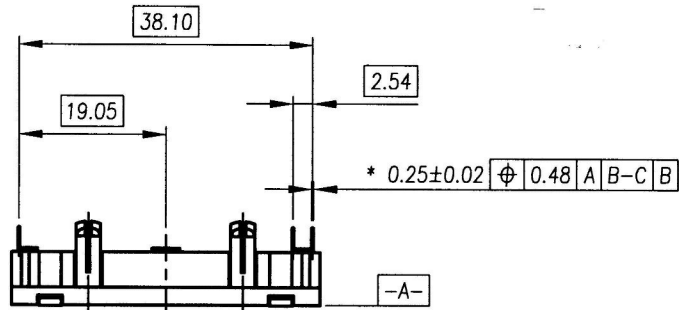


REV	MODIFICATION	DATE	DRAW
B	EN-03-0610	06-19-03"	JIM LIU
C	EN-04-0411	04.12.04"	Aaron

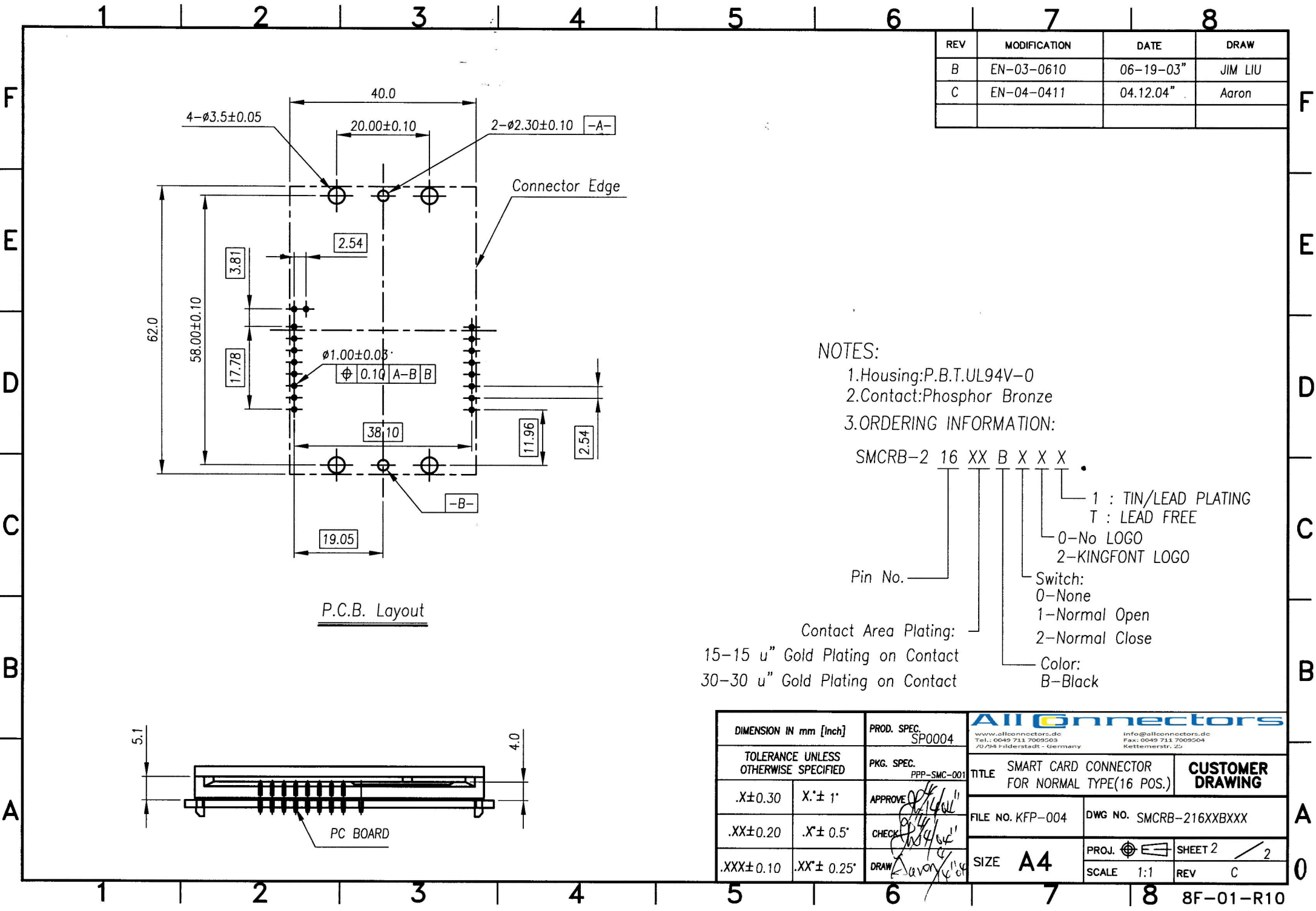


Normal Open      Normal Close

DIMENSION IN mm [Inch]		PROD. SPEC.
TOLERANCE UNLESS OTHERWISE SPECIFIED		SPO004
.X±0.30	X.*± 1'	PKG. SPEC. PPP-SMC-001
.XX±0.20	.X*± 0.5'	APPROVE <i>[Signature]</i>
.XXX±0.10	.XX*± 0.25'	CHECK <i>[Signature]</i>
		DRAW <i>[Signature]</i>

**Allconnectors**  
 www.allconnectors.de  
 Tel.: +0525 711 709903  
 70794 Filderstadt - Germany  
 info@allconnectors.de  
 Fax: +0525 711 709904  
 Kettenerstr. 25

TITLE SMART CARD CONNECTOR FOR NORMAL TYPE(16 POS.)		CUSTOMER DRAWING
FILE NO. KFP-004	DWG NO. SMCRB-216XXBXXX	
SIZE <b>A4</b>	PROJ.	SHEET 1 / 2
	SCALE 1:1	REV C



REV	MODIFICATION	DATE	DRAW
B	EN-03-0610	06-19-03"	JIM LIU
C	EN-04-0411	04.12.04"	Aaron

**NOTES:**

- 1.Housing:P.B.T.UL94V-0
- 2.Contact:Phosphor Bronze
- 3.ORDERING INFORMATION:

SMCRB-2 16 XX B X X X .

- Pin No. \_\_\_\_\_
- 1 : TIN/LEAD PLATING  
T : LEAD FREE
- 0-No LOGO  
2-KINGFONT LOGO
- Switch:  
0-None  
1-Normal Open  
2-Normal Close
- Color:  
B-Black

Contact Area Plating:  
15-15 u" Gold Plating on Contact  
30-30 u" Gold Plating on Contact

DIMENSION IN mm [Inch]		PROD. SPEC. SP0004		
TOLERANCE UNLESS OTHERWISE SPECIFIED		PKG. SPEC. PPP-SMC-001	<small>www.allconnectors.de Tel.: 0049 711 7009503 70/94 Hilderstadt - Germany</small>	
.X±0.30	X.*± 1"	APPROVE <i>[Signature]</i>	TITLE SMART CARD CONNECTOR FOR NORMAL TYPE(16 POS.)	CUSTOMER DRAWING
.XX±0.20	.X.*± 0.5"	CHECK <i>[Signature]</i>	FILE NO. KFP-004	DWG NO. SMCRB-216XXBXXX
.XXX±0.10	.XX.*± 0.25"	DRAW <i>[Signature]</i>	SIZE <b>A4</b>	PROJ.  SHEET 2 / 2
			SCALE 1:1	REV C