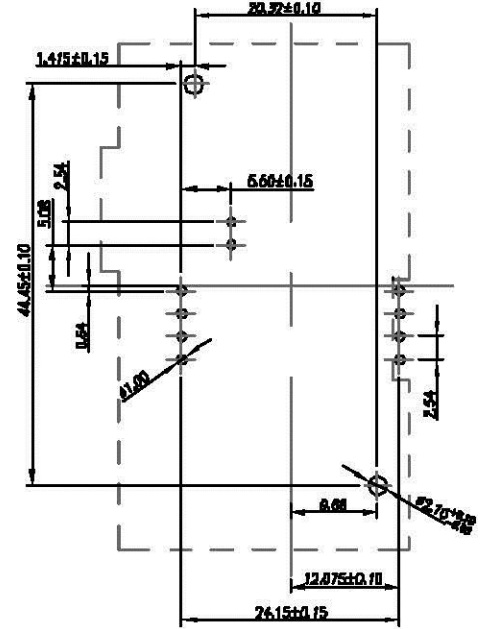
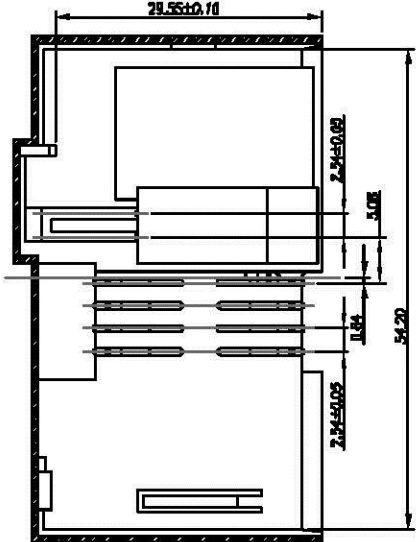
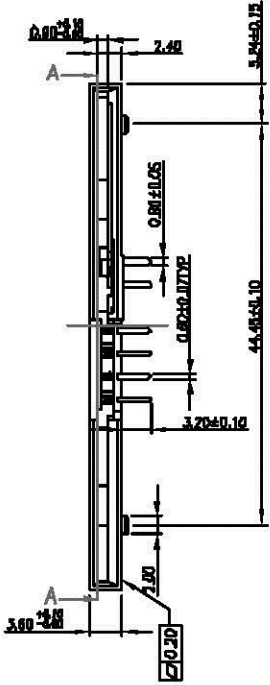
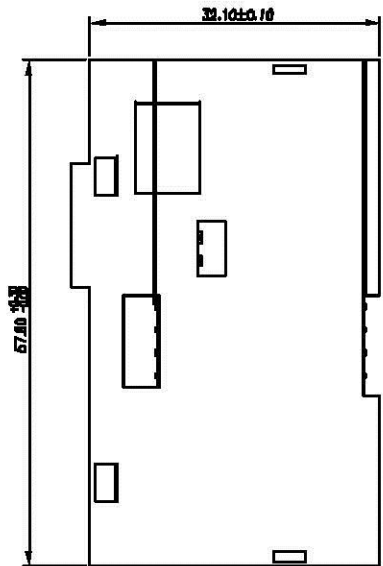
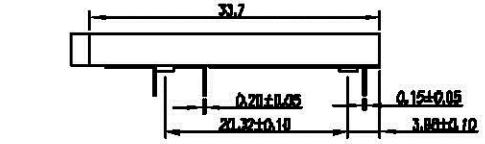


1 2 3 4 5 6 7 8

REV	MODIFICATION	DATE	DRAW

F
E
D
C
B
A



MATERIAL:
 COVER:THERMOPLASTIC, UL94V-0, BLACK
 BASE:THERMOPLASTIC, UL94V-0, BLACK
 CONTACT: COPPER ALLOY, T=0.15mm
 SWITCH: COPPER ALLOY, T=0.20mm
 PLATING:
 CONTACT AREA-30u" GOLD OVER 50u" NICKEL
 RETENTION FORCE:0.30kg Min

ORDERING INFORMATION
 SMCRB-2 08 30 B102S
 PIN NO PLATING

DIMENSION IN mm [Inch]		PROD. SPEC.		
TOLERANCE UNLESS OTHERWISE SPECIFIED		FWG. SPEC.	<small>www.allconnectors.com Tel: +49 201 228 2000 20271 Düsseldorf, Germany</small>	
.X±0.30	X'±J'	APPROVE	TITLE	SCC LOW PROFILE DIP
.XX±0.20	.X'±Z'	CHECK	CUSTOMER DRAWING	
.XXX±0.15	.XX'±	DRAW	FILE NO.	DWG NO. SMCRB-208.30B102S
			SIZE	A4
			PROJ.	SHEET 1 / 1
			SCALE	1.2:1
			REV	A

1 2 3 4 5 6 7 8 8F-01-R10