

## TECHNICAL CHARACTERISTICS

### 1. General Characteristics

Dimension: 24.00L x 18.75W x 2.75H mm  
 Weight: Approx. 0.98 g  
 Contact principle: Friction technology  
 Operating position: Shaft up / Down / Horizontal  
 Mounting System: SMT Type (without post)  
 Durability: 50,000 cycles min.

### 2. Mechanical Characteristics

Insulation material: Thermoplastic, UL 94V-0  
 RoHS Directive 2002/95/EC Compliant

### 3. Electrical Characteristics

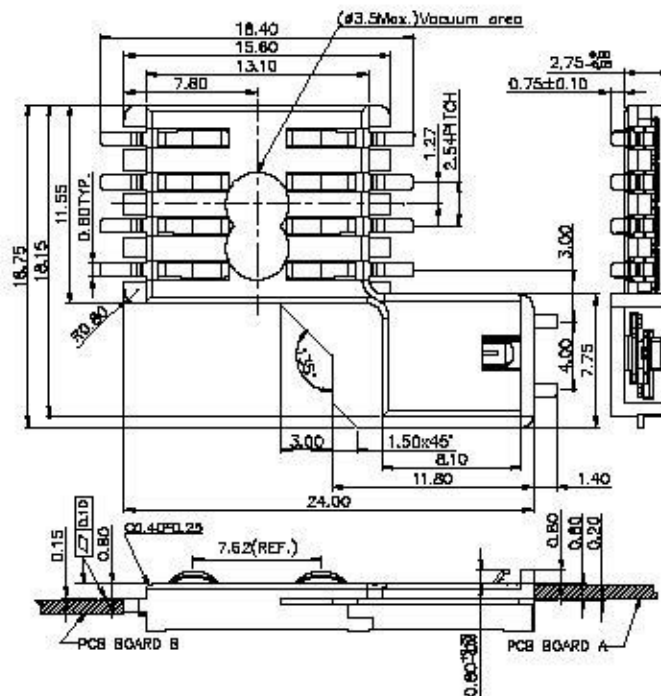
Number of contacts: 8 pins  
 Contact resistance: 50 mΩ typical, 100 mΩ max.  
 Insulation resistance: >1000 MΩ / 500 VDC  
 Switch type: Blade  
 Operation: Normally Open

### 4. Solderability

Wave: Not applicable  
 IR reflow: 260°C, 10 sec. Max.  
 Manual soldering: 360°C, 3 sec. Max.

### 5. Environmental Characteristics

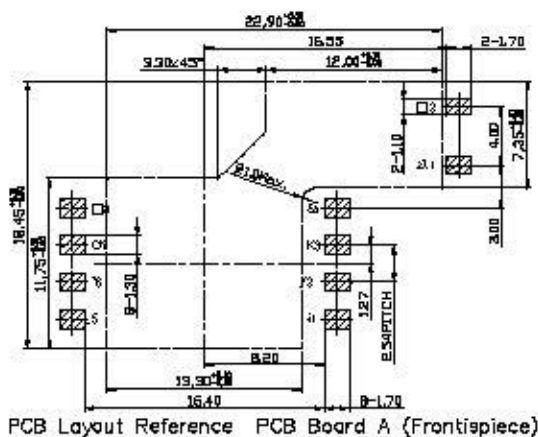
Operating temperature: -40°C ~ +85°C  
 Operating humidity: 10% ~ 95% RH  
 Storage temperature: -40°C ~ +85°C  
 Storage humidity: 10% ~ 95% RH



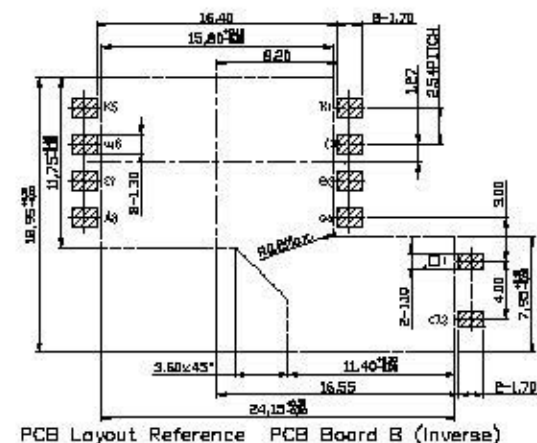
SCZ-W18xxXB-08-LF

08:PCB BOARD A  
 16:PCB BOARD B

RoHS Compliant



PCB Layout Reference PCB Board A (Frontispiece)



PCB Layout Reference PCB Board B (Inverse)

**Allconnectors**

Industrial Connector Division  
 142-141-1701 (USA)  
 800-368-6888 (Canada)

142-141-1701 (USA)  
 800-368-6888 (Canada)

PART NO. SCZ-W18xxXB-08

DWG NO. SCZ-W18xxXB-08

FILE NO.

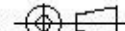
UNIT / mm

SCALE 1:1

CHECKED BY CY

DRAWING BY

PROJECTION



TOLERANCES ARE

X ± 0.2  
 XX ± 0.1  
 XXX ± 0.05  
 AVERAGE

DESCRIPTION:

AREA

REVISIONS

HK

DATE