

# TECHNICAL CHARACTERISTICS

## 1. General Characteristics

- Dimensions: 11.10L x 7.60W x 1.50H mm
- 11.10L x 7.60W x 1.80H mm
- 11.10L x 7.60W x 2.00H mm
- 11.10L x 7.60W x 2.40H mm
- 11.10L x 7.60W x 2.60H mm

- Weight: Approx. 0.20 g
- Contact principle: Friction technology
- Operating position: Shaft up / Down / Horizontal
- Mounting System: SMT Type (without post)
- Durability: 10,000 cycles min.

## 2. Mechanical Characteristics

- Insulation material: Thermoplastic, UL 94V-0
- RoHS Directive 2002/95/EC Compliant

## 3. Electrical Characteristics

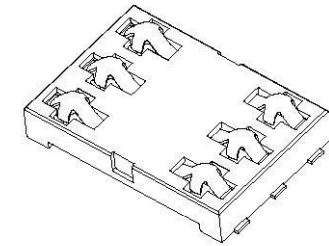
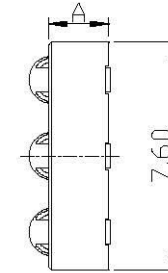
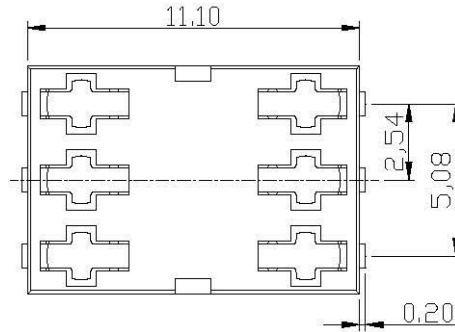
- Number of contacts: 6 pins
- Contact resistance: 50 mΩ typical, 100 mΩ max.
- Insulation resistance: >1000 MΩ / 500 VDC

## 4. Solderability

- Wave: Not applicable
- IR reflow: 260°C, 10 sec. Max.
- Manual soldering: 360°C, 3 sec. Max.

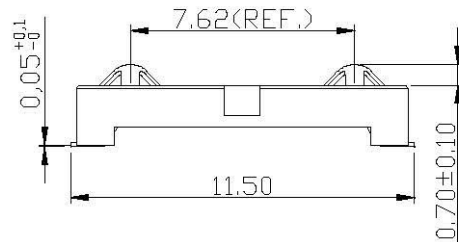
## 5. Environmental Characteristics

- Operating temperature: - 40°C ~ + 85°C
- Operating humidity: 10 % ~ 95 % RH
- Storage temperature: - 40°C ~ + 85°C
- Storage humidity: 10 % ~ 95 % RH



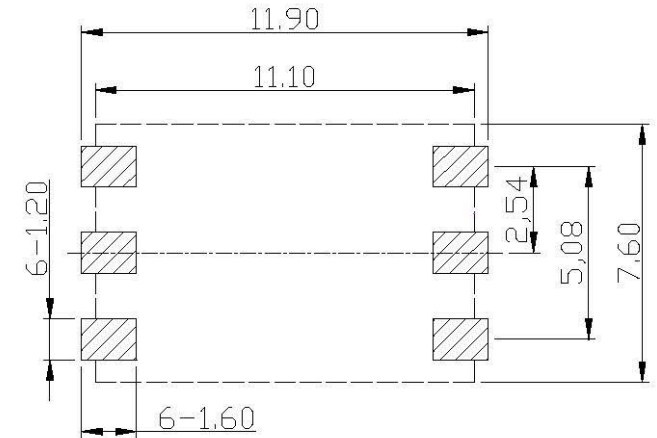
SCX-W10xxX-06-LF  
LEADFREE

- 15:1.50mm
- 18:1.80mm
- 20:2.00mm
- 24:2.40mm
- 26:2.60mm



DIMENSION "A"=1.50, 1.80, 2.00, 2.40, 2.60 mm

Unit: mm; Tolerances: ±0.15 mm  
**Mechanical outline dimension**



Unit: mm; Tolerances: ±0.15 mm  
**Reference dimension for PCB layout**

**Allconnectors**

www.allconnectors.de info@allconnectors.de  
Tel.: 03949 2011-00000 Fax: 03949 2011-00000  
93754 Filtenhof, Germany Kollernstraße, 25

PART NO. SCX-W10xxX-06

DWG NO. SCX-W10xxX-06

FILE NO.

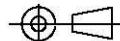
UNIT / mm

SCALE 1:1

CHECKED BY CY

DRAWING BY

PROJECTION



RoHS Compliant

TOLERANCES ARE

.X ± 0.2  
.XX ±  
.XXX ±  
AWG

DESCRIPTION:

AREA

REVISIONS

HK

DATE