

TECHNICAL CHARACTERISTICS

1. General Characteristics

Dimension: 29.65L x 17.20W x 2.00H mm
 Weight: Approx. 0.75 g
 Contact principle: Friction technology
 Operating position: Shaft up / Down / Horizontal
 Mounting System: SMT Type (post optional)
 Durability: 10,000 cycles min.

2. Mechanical Characteristics

Insulation material: Thermoplastic, UL 94V-0
 RoHS Directive 2002/95/EC Compliant

3. Electrical Characteristics

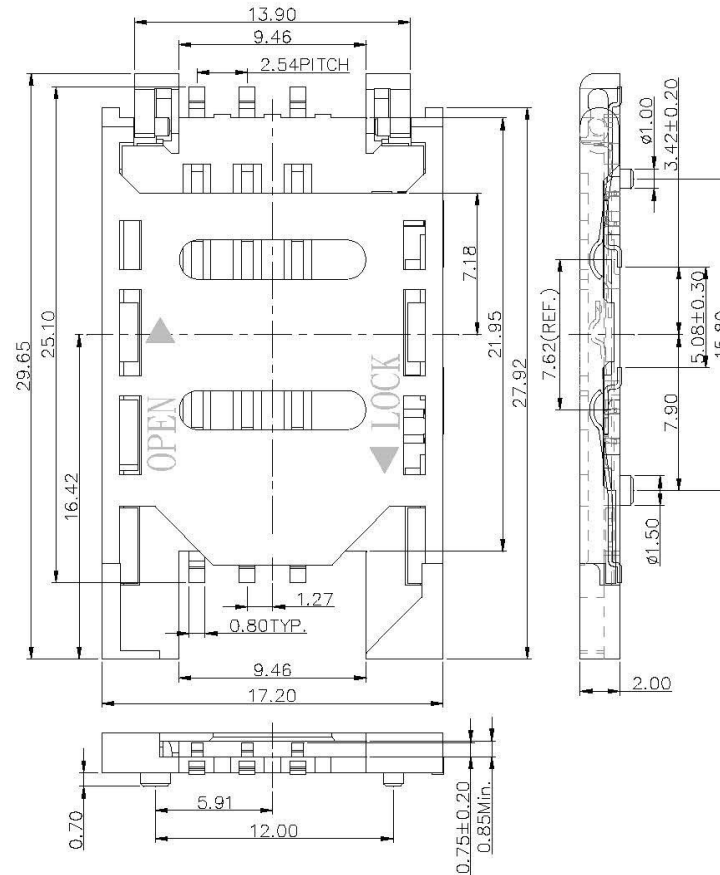
Number of contacts: 6, 8 pins (optional)
 Contact resistance: 50 mΩ typical, 100 mΩ max.
 Insulation resistance: >1000 MΩ / 500 VDC
 Switch type: Blade, Normally Open

4. Solderability

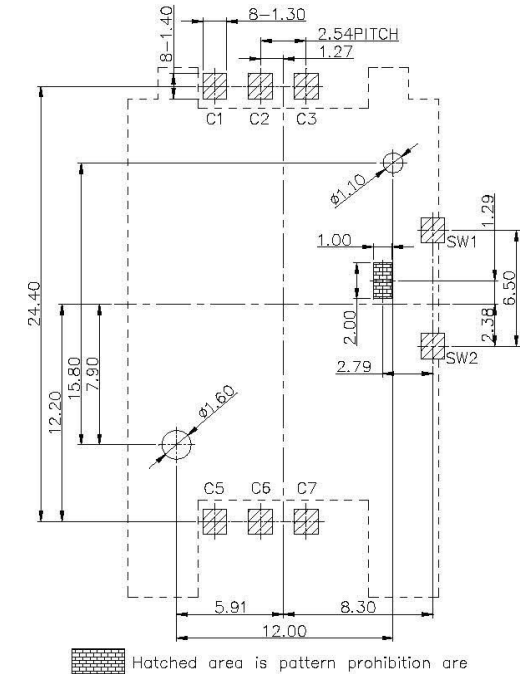
Wave: Not applicable
 IR reflow: 260°C, 10 sec. Max.
 Manual soldering: 360°C, 3 sec. Max.

5. Environmental Characteristics

Operating temperature: -40°C ~ +85°C
 Operating humidity: 10% ~ 95% RH
 Storage temperature: -40°C ~ +85°C
 Storage humidity: 10% ~ 95% RH



Unit: mm; Tolerances: ±0.15 mm
 Mechanical outline dimension (6 pins w/post)



Unit: mm; Tolerances: ±0.05 mm
 Reference dimension for PCB layout (6 pins w/post)

All Connectors

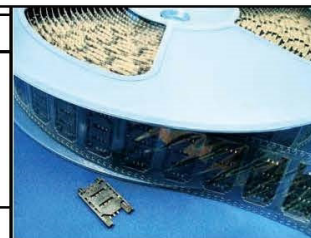
www.allconnectors.de info@allconnectors.de
 Tel.: 0049 711 7009503 Fax: 0049 711 7009504
 70794 Filderstadt - Germany Kettenerstr. 25

RoHS Compliant

DRAWING BY CY
 CHECKED BY GENIUS
 UNIT/mm SCALE 1:1
 DATE
 SIZE A4 PROJECTION

TOLERANCES ARE

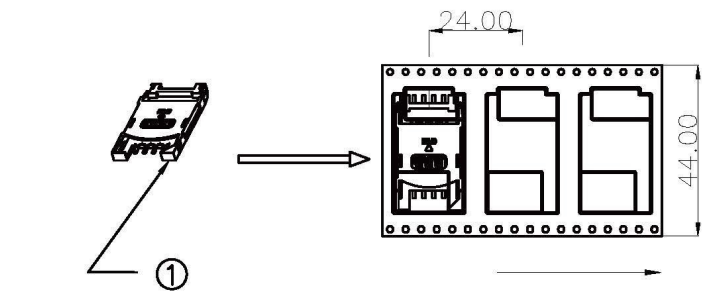
X ±
 X ±
 XX ±
 XXX ±
 ANG ±



ORDER INFORMATION

SCV-W2420PBR-06-LF
 SERIES 90°SMT PAD TO PAD 24.40mm BODY HIGH 2.0mm
 06WAY LEADFREE REEL WITH LOCATING PEG
 WITH OPEN SWITCH

DESCRIPTION:



Note:
 1. 500PCS/Reel 3500PCS/7Reel/Carton
 2. N.W=3.5Kg G.W=8.18Kg

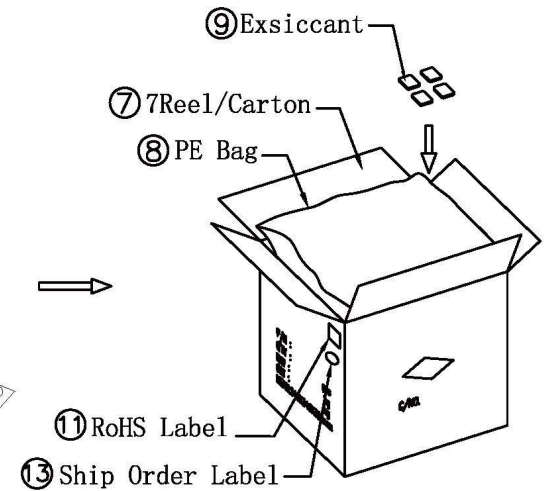
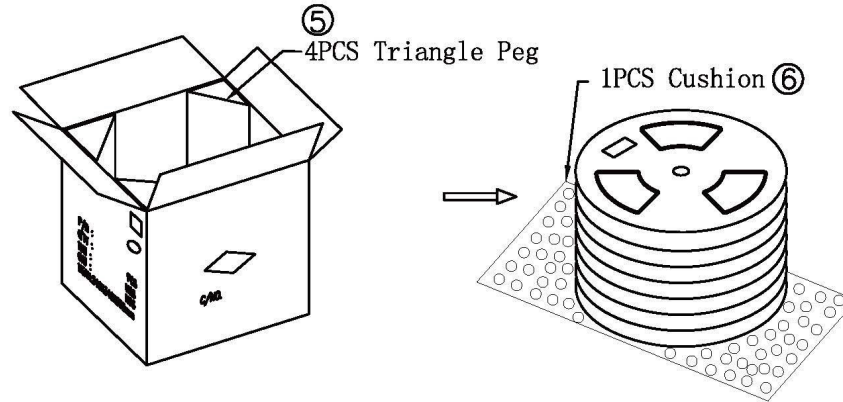
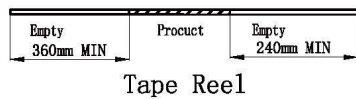
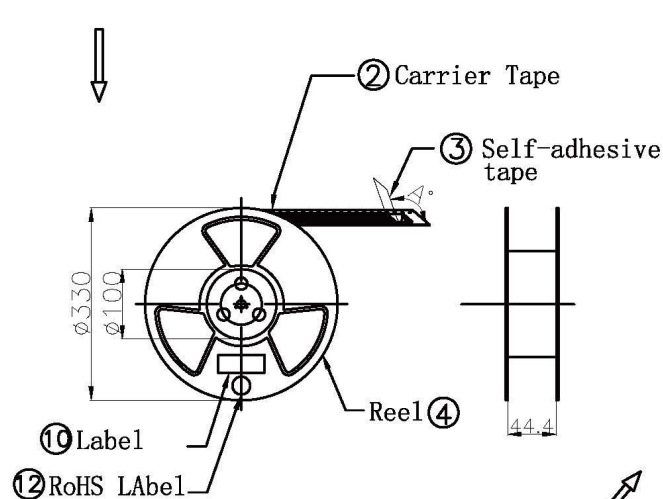


TABLE:

⑬	RoHS Label	1	PCS	/	
⑫	RoHS Label	7	PCS		
⑪	Ship Order Label	1	PCS		
⑩	Label	7	PCS		
⑨	Exsiccant	4	bag		
⑧	PE Bag	1	PCS		L800*W750mm
⑦	Exterior Carton	1	PCS		K=K, L346*W346*H352mm
⑥	Cushion	1	PCS		1*100
⑤	Triangle Peg	4	PCS		L330*H345mm
④	Reel	7	PCS		330*100mm, W=45mm
③	Self-adhesive tape	12.7	m		W=37.5, 12.7M/REEL
②	Carrier Tape	12.6	m		W=44mm, T=0.35mm, 12.6M/REEL
①	SIM Card Hinge type socket with card detect switch		UNIT		

All Connectors

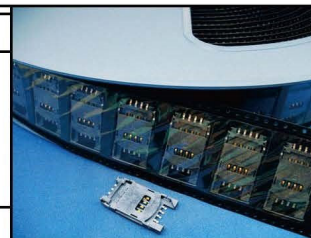
www.allconnectors.de info@allconnectors.de
 Tel.: 0049 711 7009503 Fax: 0049 711 7009504
 70794 Filderstadt - Germany Kettenerstr. 25

RoHS Compliant

DRAWING BY CY
 CHECKED BY GENIUS
 UNIT/mm SCALE 1:1
 DATE
 SIZE A4 PROJECTION

TOLERANCES ARE

X ±
 .X ±
 .XX ±
 .XXX ±
 ANG ±



ORDER INFORMATION

SCV-W2525PBR-06-LF
 SERIES 90°SMT REEL 06WAY LEADFREE
 PAD TO PAD 25.54mm OPEN SWITCH WITH LOCATING PEG BODY HIGH 2.5mm

DESCRIPTION: SIM Card Socket Hinge Type with Switch Function Reel