

Material and Finish:

1. Insulator Material: L.C.P.+30% Glass Filled, UI94v-0, Color: Black
2. CAM Housing Material: Nylon-9T+30% Glass Filled, UI94-0, Color: Black
3. Contact Material: Phosphor Bronze, C5191R-EH, t=0.15mm
4. Switch Terminal Material: Phosphor Bronze, C5191R-EH, t=0.15mm
5. Contact Area Plated: 15u" Gold Plated Over 50u" Nickel
6. Solder Area Plated: 100u" Tin Plated Over 50u" Nickel
7. Switch Terminal Contact Area Plated: 2u" Gold Plated Over 50u" Nickel
8. Switch Terminal Solder Area Plated: 100u" Tin Plated Over 50u" Nickel
9. Wire Spring: SUS304-WPB, Nickel Plated
10. Shell Material: Stainless Steel sll 301, t=0.2mm
11. Shell Solder Area Plated: 2u" Selective Gold Plated For One Side
12. CAM Pin: SUS304-WPB, Nickel Plated
13. Current Rating: 0.5A AC/DC Max
14. Contact Resistance: 30 mohm Max
15. Insulation Resistance: 500 Mohm Min
16. Dielectric Withstanding Voltage: 250V AC/DC
17. Insertion cycles: 5000 Cycles Min
18. Operation Temperature: -55°C to +85°C
19. Card Detection Switch (NORMAL OPEN)

All Connectors

www.allconnectors.de
 Tel.: 0049 711 7009503
 70794 Filderstadt - Germany

info@allconnectors.de
 Fax: 0049 711 7009504
 Kettnerstr. 25

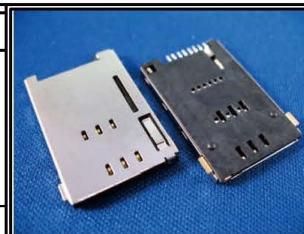
RoHS Compliant

DRAWING BY CY
 CHECKED BY GENIUS
 UNIT / mm SCALE 1 : 1
 DATE
 SIZE A4

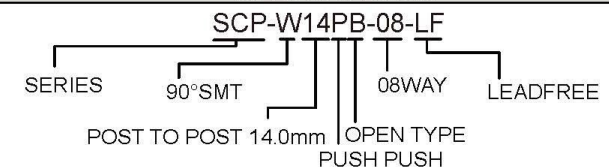
TOLERANCES ARE

X ±
 X ±
 .XX ±
 .XXX ±
 ANG ±

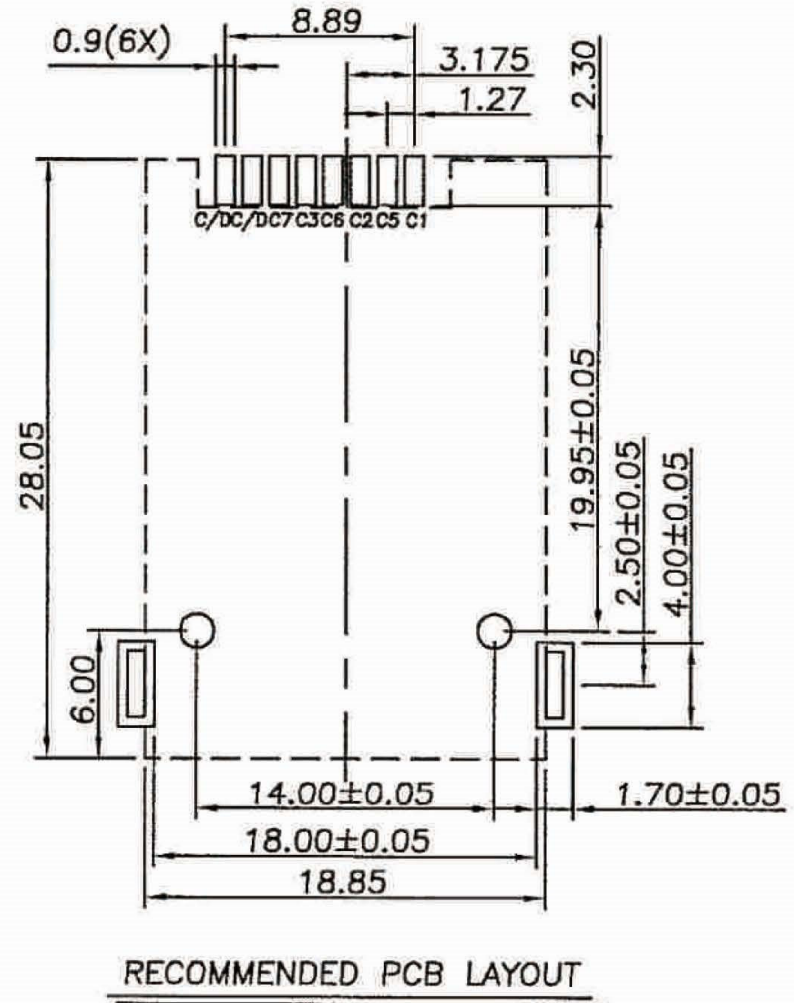
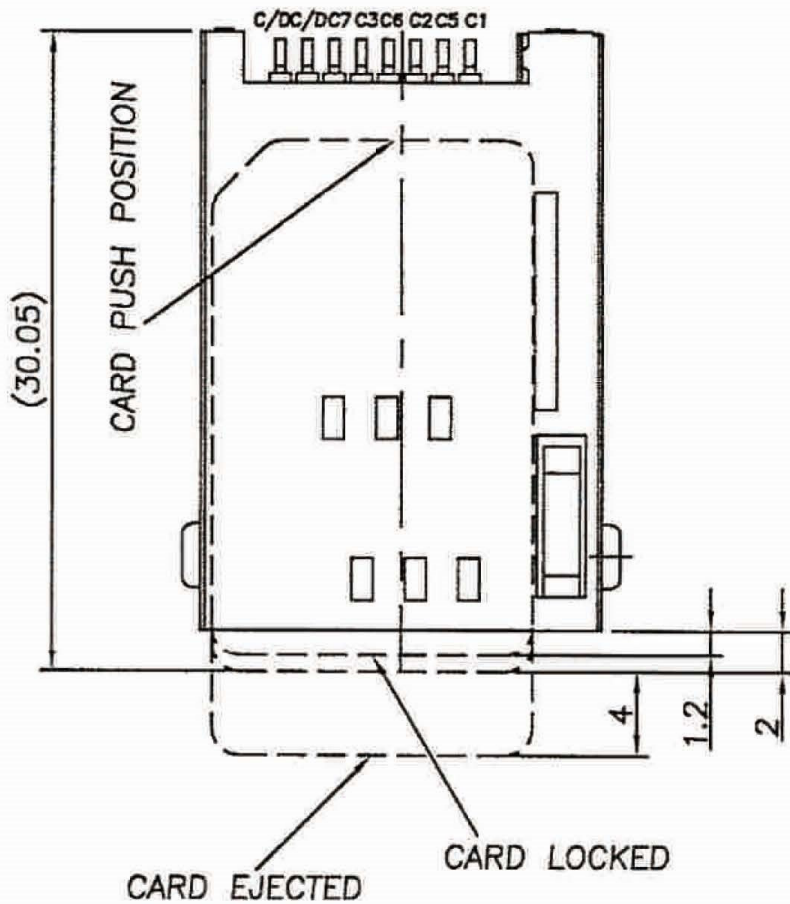
PJECTION



ORDER INFORMATION



DESCRIPTION:



All Connectors

www.allconnectors.de info@allconnectors.de
 Tel.: 0049 711 7009503 Fax: 0049 711 7009504
 70794 Filderstadt - Germany Kettenerstr. 25

RoHS Compliant

TOLERANCES ARE

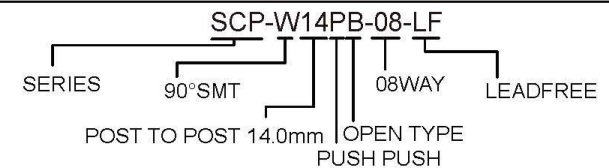
DRAWING BY CY
 CHECKED BY GENIUS
 UNIT/mm SCALE 1:1
 DATE
 SIZE A4

X ±
 X ±
 .XX ±
 .XXX ±
 ANG ±

PJECTION



ORDER INFORMATION



DESCRIPTION: