

TECHNICAL CHARACTERISTICS

1. General Characteristics

Dimension: 31.00L x 25.00W x 3.00H mm

Weight: Appro x. 5.20 g

Contact principle: Friction technology

Operating position: Shaft up / Down / Horizontal

Mounting System: SMT Type (without post)

Durability: 10,000 cycles min.

2. Mechanical Characteristics

Insulation material: Thermoplastic, UL 94V-0

3. Electrical Characteristics

Number of contacts: 6, 8 pins (optional)

Contact resistance: 60 m ohm Typical, 100 m ohm Max.

Insulation resistance: >1000 M OHM / 500 VDC

Switch Type: Blade

Operation: Closed on card holder inserted

4. Solderability

Wave: Not applicable

IR reflow: 230°C, 10 sec. Max.

Manual soldering: 330°C, 3 sec. Max.

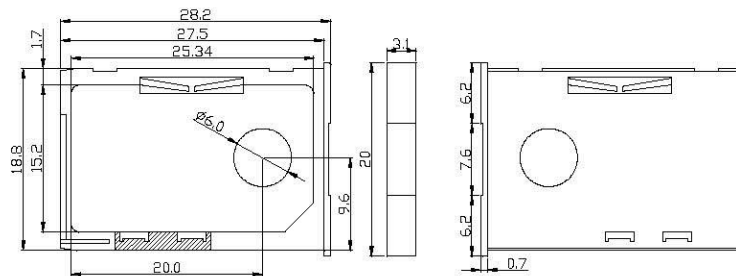
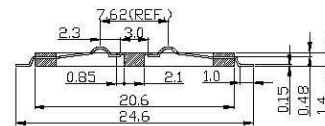
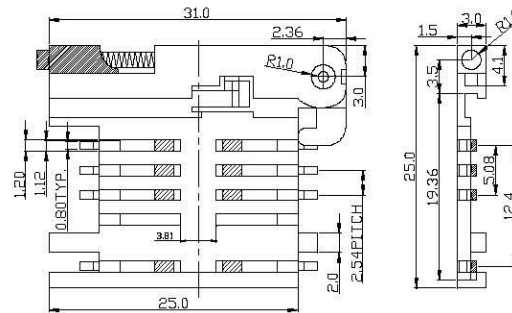
5. Environmental Characteristics

Operating temperature: - 25°C ~ + 85°C

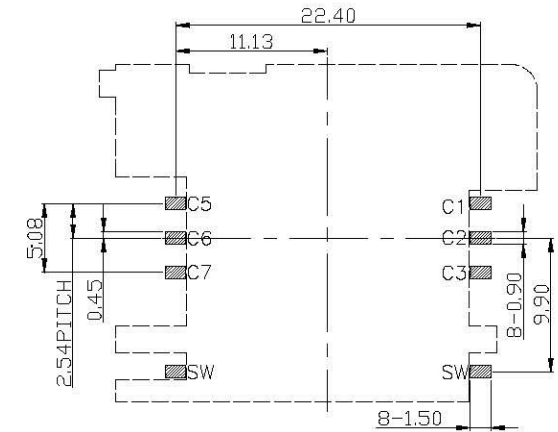
Operating humidity: 10 % ~ 95 % RH

Storage temperature: - 25°C ~ + 85°C

Storage humidity: 10 % ~ 95 % RH



Unit: mm; Tolerances: ± 0.15 mm
Mechanical outline dimension



Unit: mm; Tolerances: + 0.15 mm
Reference dimension for PCB layout

RoHS Compliant

All Connectors

www.allconnectors.de
Tel.: 0049 711 7005503
70794 Filberstadt Germany

info@allconnectors.de
Fax: 0049 711 7005504
Kottmarstr. 25

DRAWING BY CY

CHECKED BY GENIUS

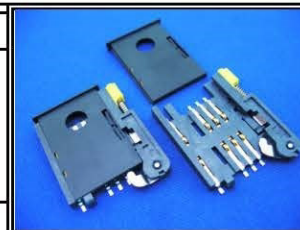
UNIT / mm SCALE 1 : 1

DATE

SIZE A4 PROJECTION

TOLERANCES ARE

X \pm
X \pm
.XX \pm
.XXX \pm
ANG \pm



ORDER INFORMATION

SCE-W2231-06-LF
SERIES | | LEADFREE
| | 06 WAY
| | LONG 31.0mm
| | PAD TO PAD 22.40mm
90°SMT

DESCRIPTION: