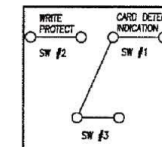
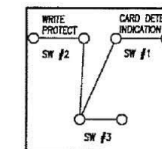


WITHOUT CARD



CARD INSERTED  
WRITE PROTECT : LOCK



CARD INSERTED  
WRITE PROTECT : UNLOCK

**Allconnectors**

www.allconnectors.de  
Tel.: 0049 711 7009503  
70794 Filderstadt - Germany

info@allconnectors.de  
Fax: 0049 711 7009504  
Kettenerstr. 25

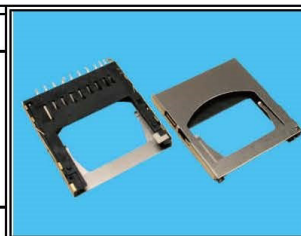
**RoHS Compliant**

DRAWING BY CY  
CHECKED BY GENIUS  
UNIT/ mm SCALE 1 : 1  
DATE  
SIZE A4

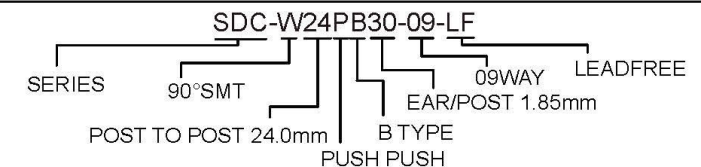
TOLERANCES ARE

X ±  
.X ± 0.30  
.XX ± 0.20  
.XXX ± 0.05  
ANG ±

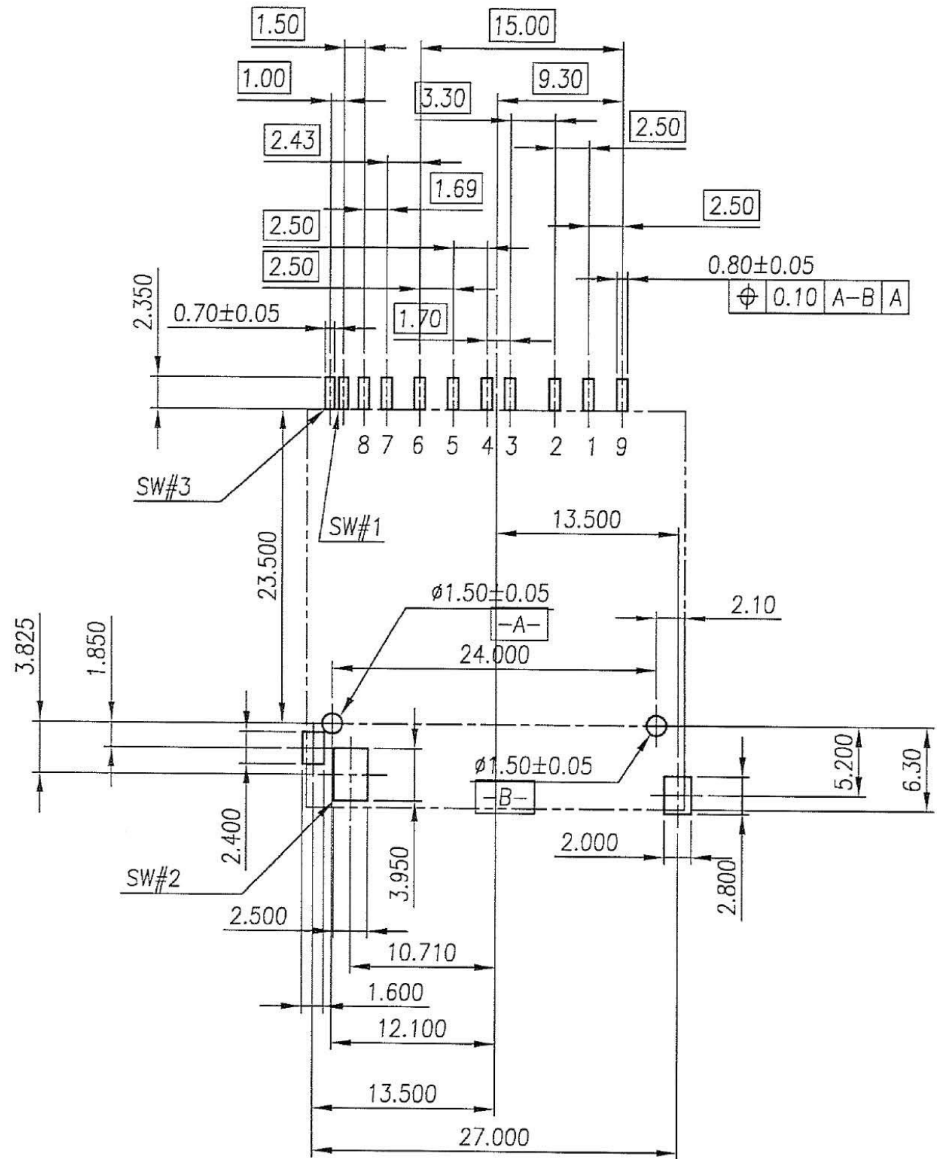
P PROJECTION



**ORDER INFORMATION**



DESCRIPTION: SD MEMORY CARD PUSH-PUSH RIG SWITCH (#3) CONNECTOR TYPE D



SD CARD PIN ASSIGN	
PIN	NAME
1	CD/DAT3
2	CMD/DI
3	VSS1
4	VDD
5	CLK/SCLK
6	VSS2
7	DAT0
8	DAT1
9	DAT2

**Allconnectors**

www.allconnectors.de  
Tel.: 0049 711 7009503  
70794 Filderstadt - Germany

info@allconnectors.de  
Fax: 0049 711 7009504  
Kettnerstr. 25

**RoHS Compliant**

**DRAWING BY** CY  
**CHECKED BY** GENIUS

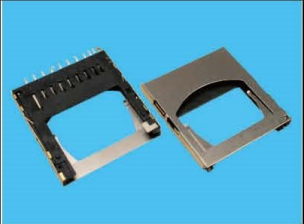
**UNIT / mm**    **SCALE 1 : 1**

**DATE**    **SIZE A4**

**TOLERANCES ARE**

X ±  
X.0 ± 0.30  
.XX ± 0.20  
.XXX ± 0.05  
ANG ±

**PPOJECTION**



**ORDER INFORMATION**

**SDC-W24PB30-09-LF**

SERIES    90°SMT    POST TO POST 24.0mm    09WAY    LEADFREE    B TYPE    EAR/POST 1.85mm    PUSH PUSH

**DESCRIPTION:** SD MEMORY CARD PUSH-PUSH RIG SWITCH (#3) CONNECTOR TYPE D