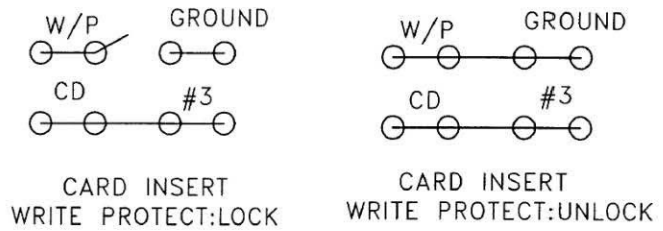


SPECIFICATION
MATERIAL
 Insulator: Thermal Plastic UL94V-0
 Contacts: Copper Alloy
 Shell: Stainless Steel
CONTACT PLATING
 Underplate: 50u"~100u" Nickel
 Contact Area: 1u"~30u" Selective Gold
 Solder Tails Area: 100u"~200u" Tin(Lead Free)
ELECTRICAL
 Operation Voltage: 3.3 V
 Current Rating: 0.5 Amps Max.
 Contact Resistance: 40 mohms Initial
 Insulation Resistance: 1000 Mohms Min. @ 500 VDC
 Dielectric Withstanding Voltage: 500 VAC / minute
 Temperature Range: -20°C to +85°C
 Mating Cycles: 10,000 Insertions(In Office)

STAND-OFF	DIM-H	DIM-T
B	1.50	4.15
C	1.80	4.45



All Connectors
 www.allconnectors.de
 Tel: 0141 711 7009501
 70734 Filderstadt - Germany

RoHS Compliant

DRAWING BY CY
CHECKED BY GENIUS

UNIT / mm **SCALE 1 : 1**

DATE

SIZE A4 **P PROJECTION**

TOLERANCES ARE

X ±
 .X ±
 .XX ±
 .XXX ±
 ANG ±



ORDER INFORMATION

SDC-W24PB02xx-09-LF

SERIES | | | | | **LEADFREE**

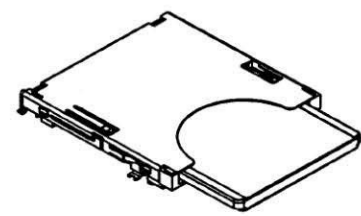
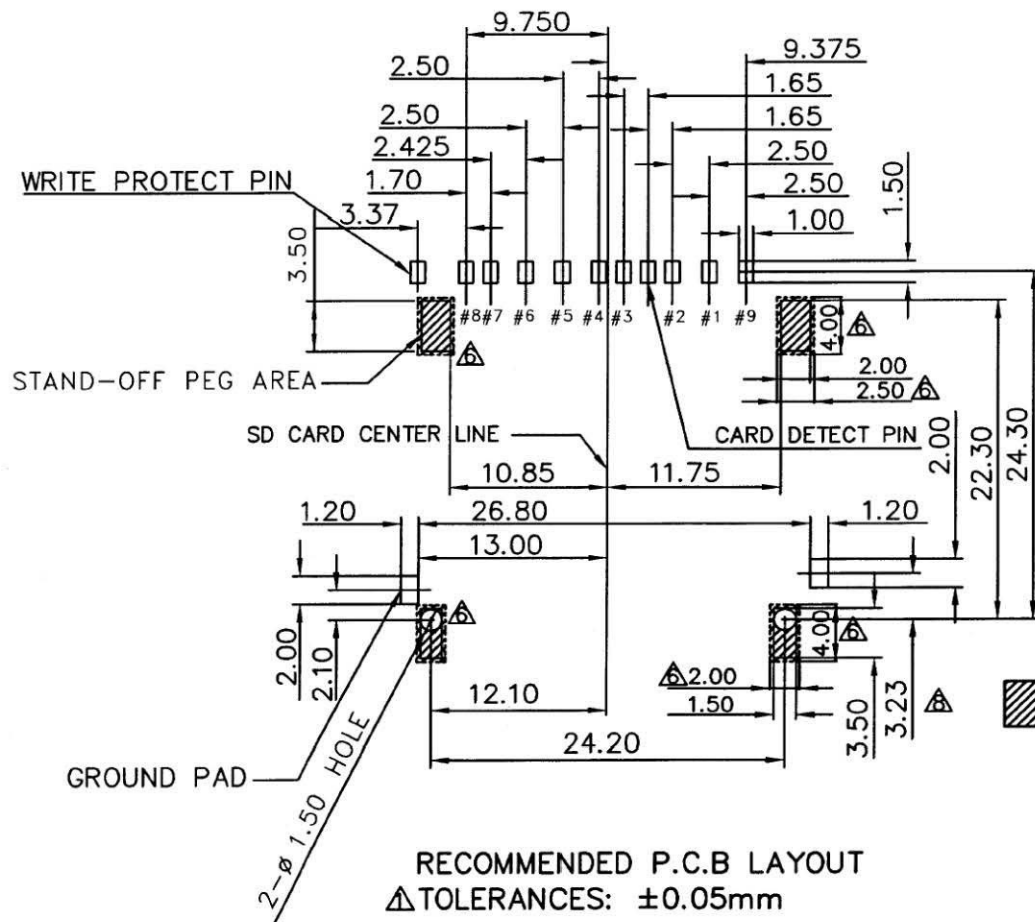
90°SMT | | | | | 09WAY

POST TO POST 24.2mm | | | | | 15:1.5mm STAND OFF

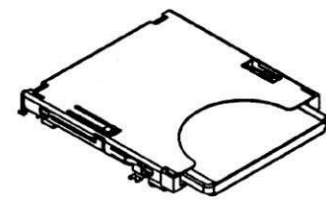
PUSH PUSH | | | | | PAD 0+2

| | | | | B TYPE

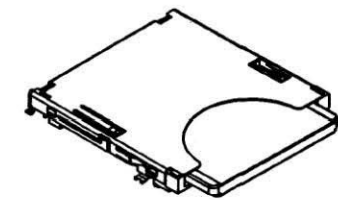
DESCRIPTION:



CARD INSERTION POSITION



CARD CONTACT POSITION



CARD COMPRESSION POSITION

RECOMMENDED P.C.B LAYOUT
 Δ TOLERANCES: ±0.05mm

All connectors

www.allconnectors.de
 Tel.: 0049 711 7009008
 70734 Filderstadt - Germany

info@allconnectors.de
 Fax: 0049 711 7009004
 Kettnerstr. 25

RoHS Compliant		TOLERANCES ARE	
DRAWING BY CY		X ±	
CHECKED BY GENIUS		.X ±	
UNIT / mm	SCALE 1 : 1	.XX ±	
DATE		.XXX ±	
SIZE A4	P PROJECTION	ANG ±	



ORDER INFORMATION

SDC-W24PB02xx-09-LF

SERIES	LEADFREE
90°SMT	09WAY
POST TO POST 24.2mm	15:1.5mm STAND OFF
PUSH PUSH	18:1.8mm STAND OFF
	PAD 0+2
	B TYPE

DESCRIPTION: SCN 7P/BH 7P L:250mm