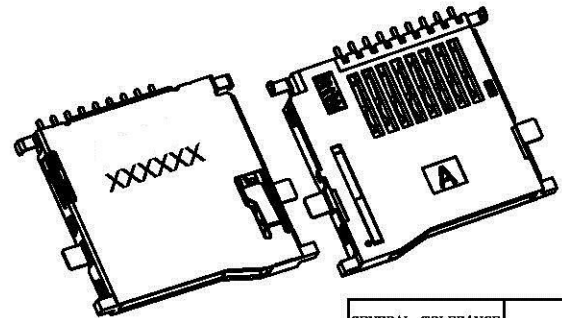
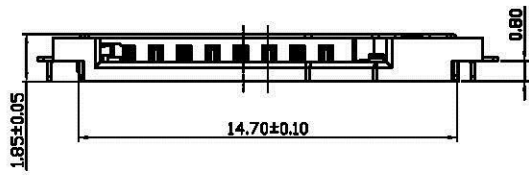
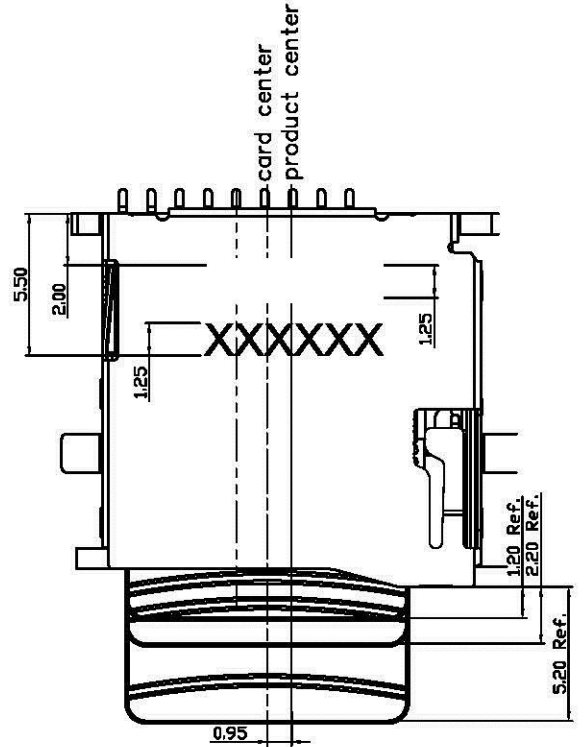
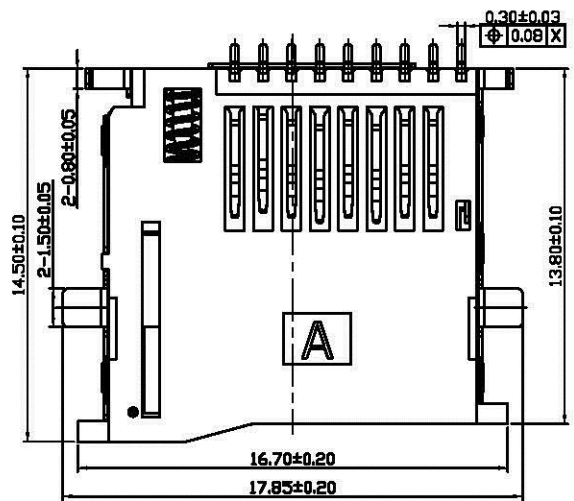
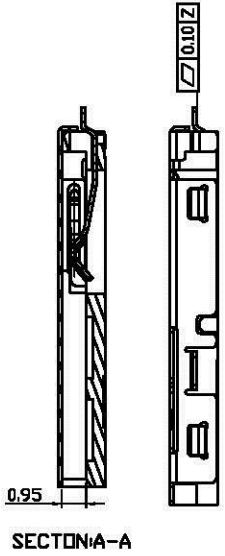
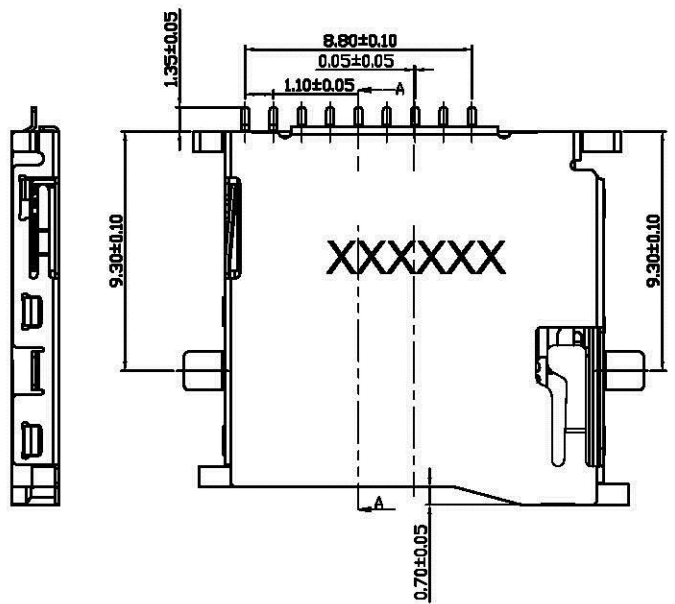
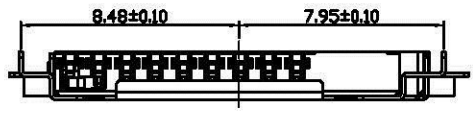


ACAD GENERATED DRAWING. DON'T CHANGE BY HAND

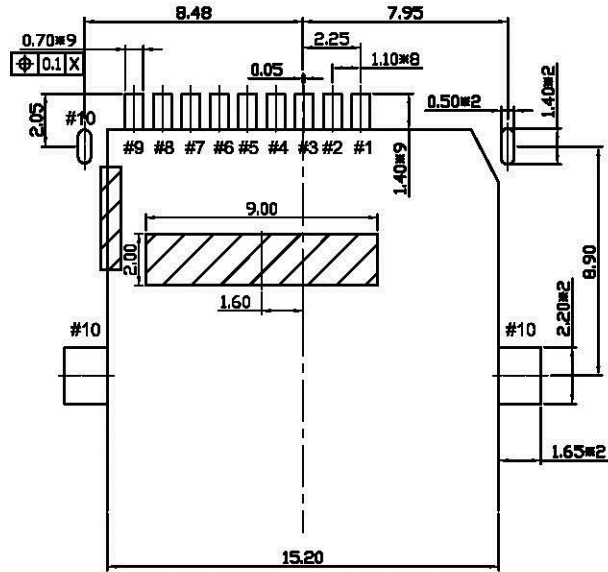
REV	DATE	ECN NO.	MODIFICATION	APPROVER
A	2013/04/08		NEW	Jason



GENERAL TOLERANCE				UNITS	NAME:	All Connectors			
SELECT	TOL	1	2	3	mm	Micro sd push conn.	<small>Copyright © 2013 All Connectors, Inc. All rights reserved. No part of this publication may be reproduced, stored in a retrieval system, or transmitted, in any form or by any means, electronic, mechanical, photocopying, recording, or by any information storage and retrieval system, without the prior written permission of All Connectors, Inc.</small>		
DR.					MAT'L	PART NO:	TITLE:		
X.XXX	±0.10	±0.05	±0.15			MR09A-04***	Micro sd push conn. 沉板B		
X.XX	±0.25	±0.13	±0.05		FINISH	APPD:	DWG NO.		
X.X	±0.50	±0.25	±0.5			Peter	ATOM-A01451		
X	±0.50	±0.25	±1.00		Q'TY	CHKD:	SCALE SHEET REV		
ANGLE	±2°					Jason	1:1 1/2 A		
						DR:			
						xh			

ACAD GENERATED DRAWING. DON'T CHANGE BY HAND

REV	DATE	ECN NO.	MODIFICATION	APPROVER
A	2013/04/08		NEW	Jason



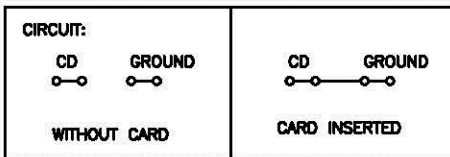
RECOMMENDED PCB LAYOUT  
(ALL TOLERANCE ARE ±0.05)

: PROHIBITION AREA

Pin No.	MICRO SD
PIN1	DAT2 1P
PIN2	CD/DAT3 2P
PIN3	CMD 3P
PIN4	VDD 4P
PIN5	CLK 5P
PIN6	VSS 6P
PIN7	DAT0 7P
PIN8	DAT1 8P
PIN9	CARD DETECT
PIN10	GROUND

**SPECIFICATION**

- Material:
  - housing: LCP, UL94V-0,color:black.
  - orbit: PA46, UL94V-0,color:black.
  - Contacts: Phosphor Bronze, Tin 160u" at Solder Tail, Selected Gold on Contact Area Plating.
  - Shell: Stainless. Pickling
- Electrical Characteristics:
  - Operating voltage : 10V AC(rms)/DC.
  - Current rating : 0.5 A.
  - Operating Temperature: -25°C~+85°C.
  - Insulation resistance: 1000M ohms min. at 250VDC
  - Dielectric withstanding voltage:500 VAC/1minute.
  - Contact resistance: 100m ohms max.
- Mechanical characteristics
  - 3.1 Mating durability:10000 cycles.
  - 3.2 Insertion force: 30N Max.
  - 3.3 Extraction force: 1~30N
  - 3.4 Mating cycle: 10000 cycles at the speed rate of 400-600 cycles/h; Without distortion of plastic and serious wear and tear in terminal, No signal break.



GENERAL TOLERANCE	UNITS	NAME:	All Connectors								
SELECT <input checked="" type="checkbox"/>	mm	Micro sd push conn.	<small>                     常州艾利连接器有限公司                      CHANGZHOU ALL CONNECTORS CO.,LTD.                      常州艾利连接器有限公司                      CHANGZHOU ALL CONNECTORS CO.,LTD.                 </small>								
DR. TOL	MAT'L	PART NO:	TITLE:								
X.XXX		MR09A-04***	Micro sd push conn. 规格B								
X.XX	FINISH	APPD: Peter	DWG NO. ATDM-A01451								
X.X	Q'TY	CHKD: Jason	<table border="1"> <tr> <th>SCALE</th> <th>SHEET</th> <th>REV</th> </tr> <tr> <td>1:1</td> <td>2/2</td> <td>A</td> </tr> </table>			SCALE	SHEET	REV	1:1	2/2	A
SCALE	SHEET	REV									
1:1	2/2	A									
X		DR: xh									
ANGLE ±2°											