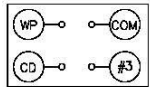
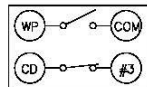


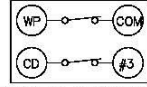
CIRCUIT WITHOUT CARD



CARD INSERTED



CARD INSERTED



●WRITE PROTECT SW. : LOCK  
●STATUS: READ ONLY

●WRITE PROTECT SW. : UNLOCK  
●STATUS: WRITE ENABLE

Material:

Insulator: LCP+30% G.F., UL 94V-0 rated,Color Black.

Contact: Phosphor Bronze

Shield Cover:stainless steel sheet metal,SUS304,0.2t.

Contacts Plating:

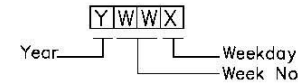
Contact Area: Gold Plating over1.27um(50u")min Ni underplate.

Soldering Zone: 3.5um(120u")min sn,over 1.27um(50u")min. Ni undreplate.

Gold plating in contact area:3u" and 15u" Gold Plating.

Shield Cover: Gold flash in soldering zone over Nickel under plating overall.

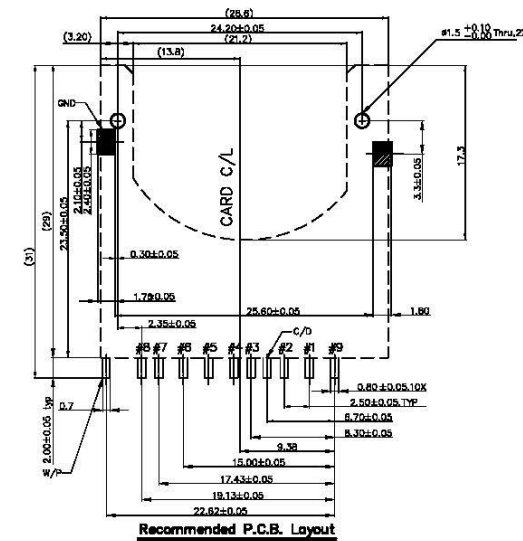
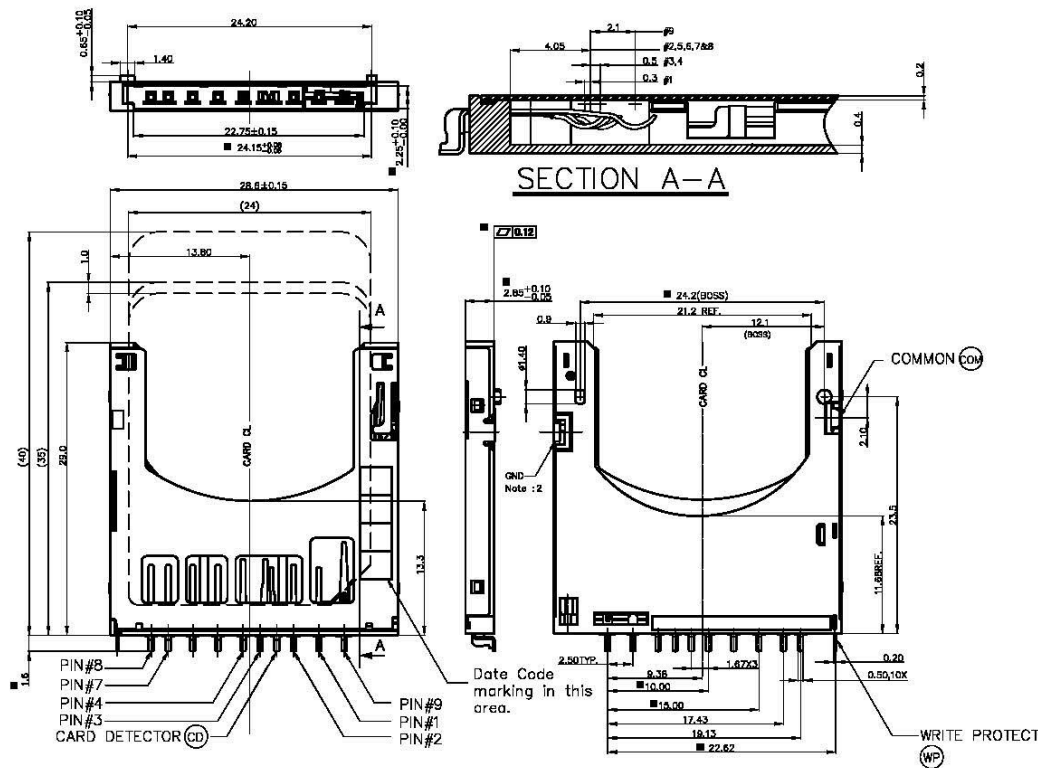
Date Code Marking:



104D-R X A 0-R01  
1 2 3 4

1.Type 3.Stand Off  
R:Reverse Mount A:0mm

2.Contact Plating 4.ROHS  
A:15u" Gold Plating  
B:3u" Gold Plating



REV.	DESCRIPTION	DATE	REV.	DESCRIPTION	DATE
1			4		
2			5		
3			6		

UNLESS OTHERWISE SPECIFIED TOLERANCE		
ANGLES	ANG.	±5°
LINEAR	0.	±0.3
	0.0	±0.25
	0.00	±0.20
SCALE	AS SHOWN	UNIT: mm
DRAWN	Willis	2012/08/03
CHECKED	Angel	2012/08/03
APPROVED	Ken	2012/08/03
SIZE	A4	REV. 1.0

**All Connectors**

www.allconnectors.de    info@allconnectors.de  
 Tel: 049 711 7009508    Fax: 049 711 7009504  
 70754 Filberstadt Germany    Kettnerstr. 25

**DRAWN NAME:**  
SD Socket Reverse Mount, Push-Push Type

**PRODUCT NO.:** 104D-RXA0-R01

**FILE NAME:** 104D-RXA0-R01\_B\_1

- ▲ Revise:
- ▲ Revise:
- ▲ Revise: