

RECOMMEND P.C.BOARD LAYOUT

NOTES:

1.MATERIALS

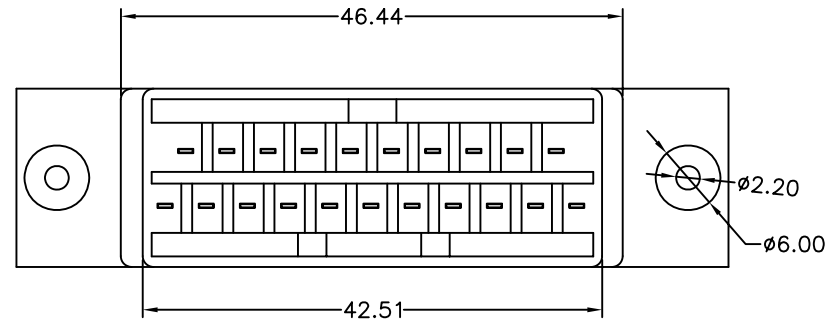
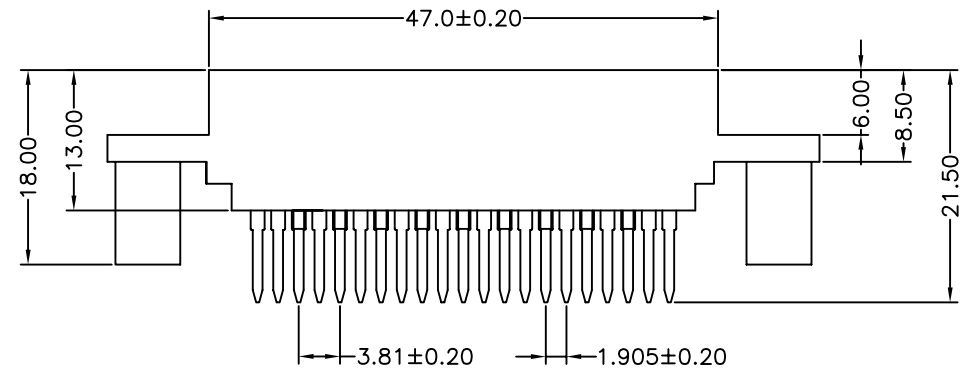
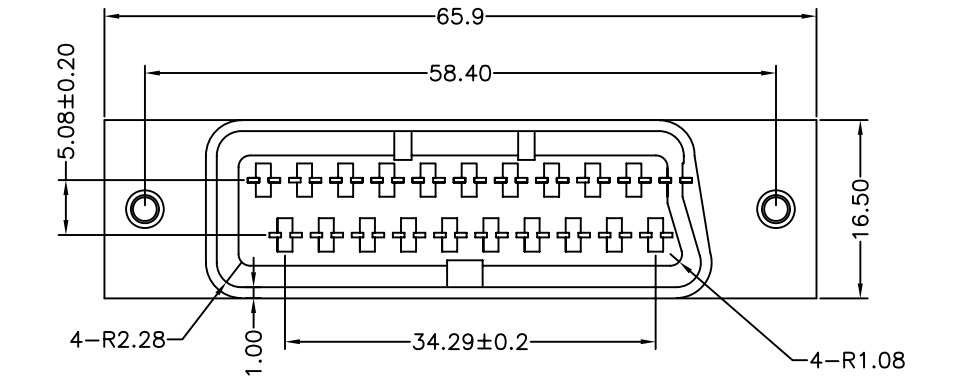
- 1.1 Insulator:PC
- 1.2 Contact:Brass, 0.3T

2.SPECIFICATIONS

- 2.1 Current Rating: 3Amp
- 2.2 Dielectric Strength:1000V AC for one minute
- 2.3 Insulator Resistance:1000 M ohms Min
- 2.4 contact Resistace:30m ohms Max
- 2.5 Operation temperature:-55°C to +105°C
- 2.6 INSERTION FORCE:<5kg
- 2.7 EXTRACTION FORCE:>1.5kg

SC-SDE-21-LF  
LEADFREE

RoHS Compliant



PART NO. SC-SDE-21		CHECKED BY CY		TOLERANCES ARE .X±0.2 .XX± .XXX± AWG	DESCRIP TION: 180度母座金 有耳 螺絲孔直徑2.2 PC 無毒	AREA	REVISIONS	HK	DATE
DWG NO. SC-SDE-21		DRAWING BY							
FILE NO.		PROJECTION							
UNIT / mm	SCALE 1:1								