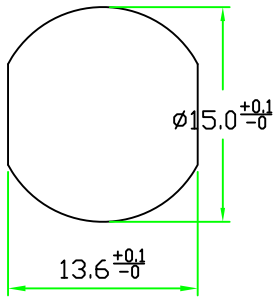
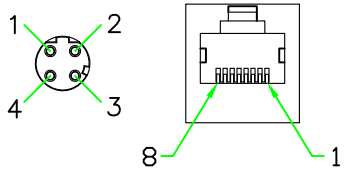
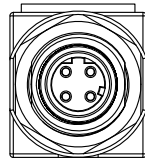
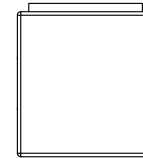
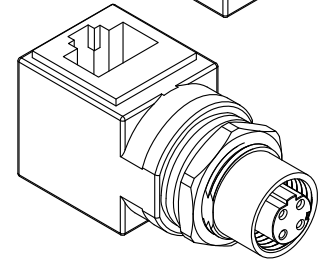
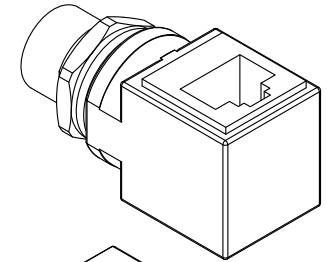
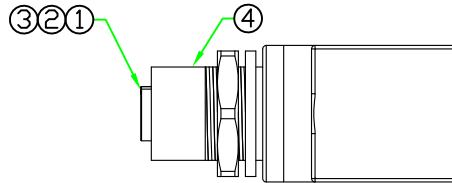
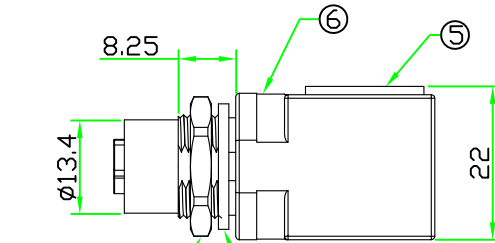
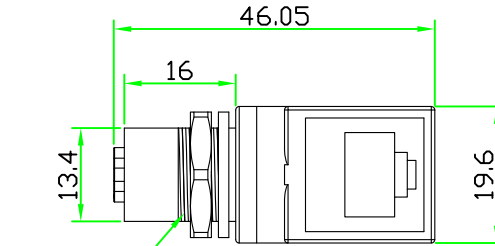


REV	DESCRIPTION	DATE
A	ISSUE	Dec/15/2011



Recommended Panel Cut-Off

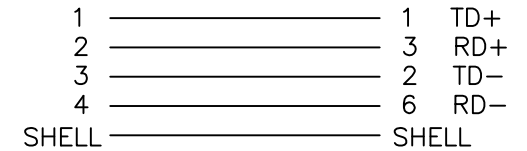


PIN ASSIGMENT FRONT VIEW

WIRING DIAGRAM

D12D-M204HSR

RJ45 JACK



No.	PART NAME	DESCRIPTION	COLOR	Q'TY	REMARKS
8	HEX NUT	BRASS. NICKEL PLATED.		1	M12P-NUT-R
7	GASKET	EPDM.	BLACK	1	M12-G-EP70
6	OVERMOLD	PU.	BLACK	1	
5	RJ45 JACK	STRAIGHT ANGLE WITH SHIELD.		1	9646-8814-SA-A
4	METAL SHELL	BRASS.NICKEL PLATED.		1	M12F-RPH-KTA-A3
3	O-RING	VITON.	BLACK	1	M12-O-VK
2	CONTACT	BRASS. 6u" GOLD PLATED. FEMALE PIN.		4	M12F-1.0SPL20.5
1	CONNECTOR	M12 D-Coding 4P FEMALE CONNECTOR INSERT. NYLON+GF.	BLACK	1	D12D-4FC (20-135-N5)
No.	PART NAME	DESCRIPTION	COLOR	Q'TY	REMARKS

**HOLIN®** **Allconnectors**  
www.allconnectors.eu | info@allconnectors.eu  
 Tel: +49 (0)711 / 358 110 20 | Fax +49 (0)711 / 358 110 25

**UNIT:** mm  
**SCALE:** 1:1

**TITLE :** M12 D-Coding 4P FEMALE to RJ45 JACK Ethernet Adaptor

**UNLESS OTHERWISE SPECIFIED TOLERANCES:**  
 X ±0.25 XX ±0.1  
 XXX ±0.05 ANGLE ±1°X

**P/N:** D12DRJI-M204J  
**DWG.NO:** D12DRJI-M204J

**DR. jaek**  
**CH. michael**  
**AP.**

**REV. A** **SHEET 1/1**