

Notes:

Characteristics Description:

1. RJ45 10/100 Base-Tx Transformer Jack With Transformer Impedance Resistor/High Voltage Capacitor.
2. Size Same As RJ-45 Modular Jack To Save PCB Space.
3. Reduce EMI Radiation, Improve EMI Performance.
4. Designed For Network Interface Card Application.
5. Designed To Meet IEEE 802.3u Requirement.
6. Designed For 100 Base Transmission over UTP-5 Cable.
7. Operation Temperature Range: -20°C To 70°C

Electrical Specifications:

1. Inductance At 100 KHz, 100 mV 8mA DC Bias: 350 uH Min.
2. Leakage Inductance 0.3 uH Max. @100KHz 100mV
3. C W/W 30pF Max. @1MHz
4. Insertion Loss: 1.1 dB Max. @ 1-100 MHz
5. Return Loss: 18dB Min. @ 1-30MHz
12dB Min. @ 60-80MHz
6. Cross Talk: 35dB Min. @ 1-80MHz
7. Common Mode Rejection: 35dB Typ. @30-100MHz
8. Rise Time, RS=100 Ohms And RL=100 Ohms
Output Voltage=1V Peak 3.0nS Max.
Output Voltage=1V Peak 3.0nS Max.
9. Isolation @60Hz: 1500Vrms (Input To Output) 60 Seconds
10. DCR J(6-3)=J(2-1)=1.2 Ohms Max.

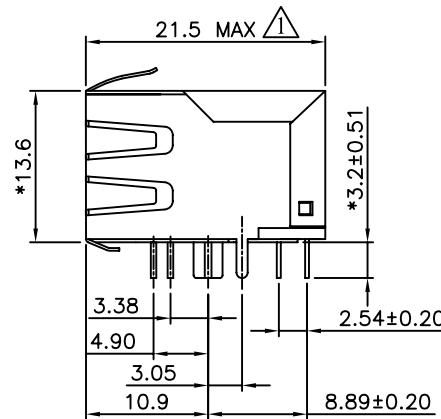
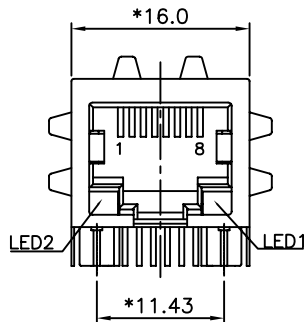
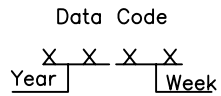
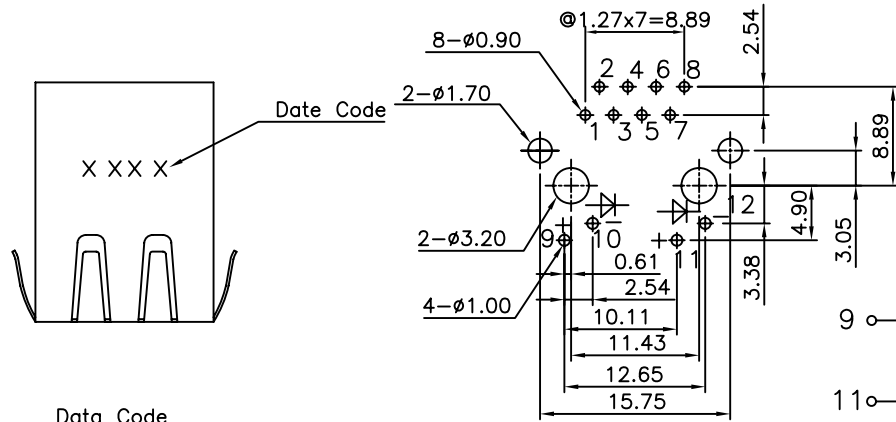
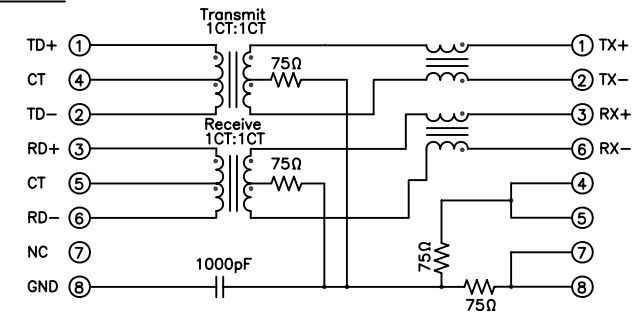
Mechanical:

- | | |
|------------------------------|---|
| 1. Housing Material | : High Temperature UL94V-0 |
| 2. Insert Material | : High Temperature UL94V-0 |
| 3. Contact Material | : Phosphor Bronze t=0.35mm. |
| 4. Plating | : Contact Area- 50u" Gold Plating. Tails- 150u" Tin Min. Over 50u" Nickel. |
| 5. Shield Material | : Brass C2680 50u" Nickel Plating t=0.25mm. |
| 6. Operating Life | : 750 Cycles Min. |
| 7. PCB Retention Pre-Solder | : 1 Lb Min. |
| 8. PCB Retention Post-Solder | : 10 Lbs Min. |

Environmental:

1. Storage : -40°C To +85°C.
2. Operation : -20°C To +70°C.
3. Wave Soldering Temperature: 255~265°C (5~10 Seconds)
Mates With Modular Plug Conforming To FCC Part 68, Subpart F.

Schematic:



213A-11 X A X-R
1 2 3 4 5

1.No. of Contact
11:1X1

2.Contact Plating
A:Gold Flash
C:5u" Gold Plating
E:15u" Gold Plating
G:30u" Gold Plating

3.EMI Tab
A:with EMI Tab

4.LED
A:Y(LED2)+G(LED1)
B:G(LED2)+Y(LED1)

5.RoHS

| UNLESS OTHERWISE SPECIFIED TOLERANCE | |
|--------------------------------------|-------|
| ANG. | ±5° |
| 0. | ±0.3 |
| .0 | ±0.25 |
| .00 | ±0.20 |

| | | | |
|----------|----------|-------|------------|
| SCALE: | AS SHOWN | UNIT: | mm |
| DRAWN | Willis | DATE | 2010/02/10 |
| CHECKED | Angel | DATE | 2010/02/10 |
| APPROVED | Ken | DATE | 2010/02/10 |

Allconnectors
www.allconnectors.eu | info@allconnectors.eu
Tel. +49 (0)7111 / 358 110 20 | Fax +49 (0)7111 / 358 110 25

DRAWN NAME:
RJ45 Jack Magnetic Type with LED

PRODUCT NO. 213A-11XAX-R

FILE NAME: 213A-11XAX-R_B_1

1 Revise: 21.5 MAX

| REV. | DESCRIPTION | DATE | SIZE | REV. |
|------|-------------|------|------|------|
| 1 | | | A4 | |