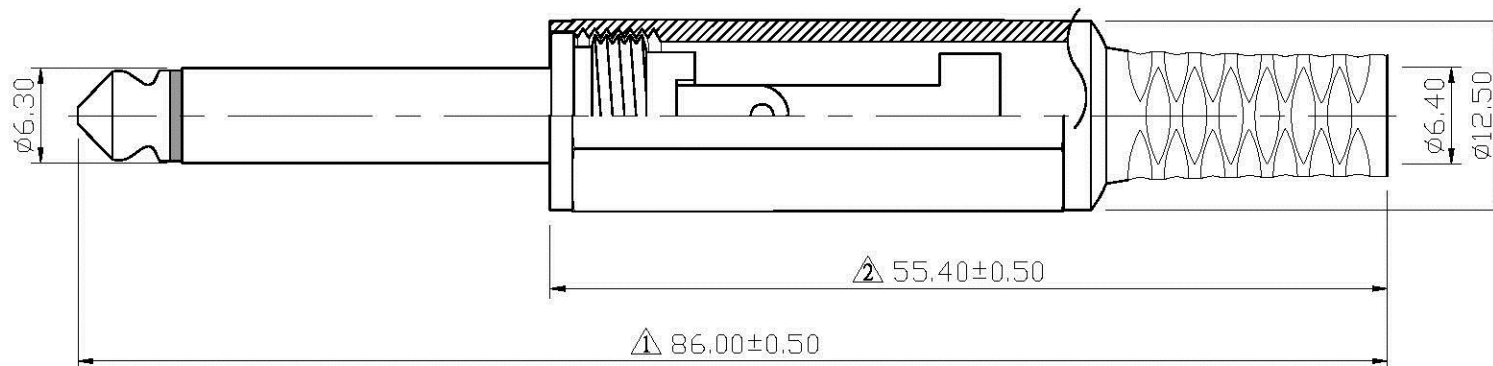
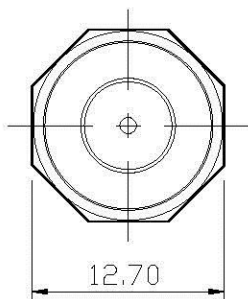


No.	DATE	DESCRIPTION	REV
△	2009. 09. 14	Original dimation 86.60±0.50	A
△	2009. 09. 14	Original dimation 55.40±0.30	

REMARK : RoHS REQUIREMENT APPLIED
(符合RoHS)



S 1 : 1

-	shell	1	plastic	black	
-	clip	1	brass	nickel	
-	insulator	1	ABS	black	
-	insulator	1	POM	white	
-	solder tab	1	brass	nickel	
-	contact pin	1	brass	nature	
-	contact pin	1	iron	nickel	
-	body	1	brass	nickel	
-	body	1	brass	nickel	
-	body	1	brass	nickel	
NO.	Description	Unit	Materials	Finish	Drawing No.

DIMENSIONS ARE IN
MILLIMETERS

UNLESS OTHERWISE PECIFIED
TOLERANCES
(一般公差)
0.5-6 = ±0.1
>6-30 = ±0.15
>30-120 = ±0.2
>120-315 = ±0.3
>315-1000 = ±0.4
ANGLES(角度) = ±3°

CHECKED

DRAWN

Wing

DATE

2007. 11. 23

All Connectors

www.allconnectors.de
Tel.: 0049 711 7009503
70/91 Hilderstact - Germany

info@allconnectors.de
Fax: 0049 711 7009504
Kettenerstr. 25

TITLE

AUDIO PLUG

DRAWING NO.

AP6.3-256BKPLN-Mono-6.4

FILE NO.

DRAWINGAUDIOVAPAP6.3-256BKPLN-Mono-6.4

SCALE

2 : 1

UNIT

MM