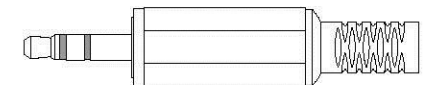
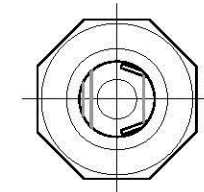
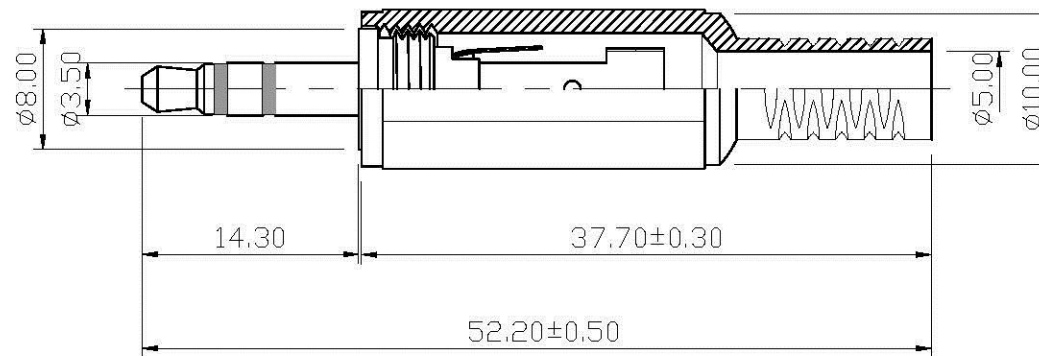
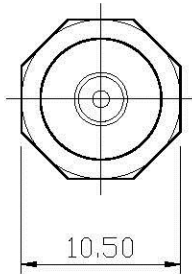


REMARK : RoHS REQUIREMENT APPLIED
(符合RoHS)



S 1 : 1

-	insulator	2	POM	black	
-	solder tab	1	brass	nickel	
-	solder tab	1	brass	nickel	
-	clip	1	brass	nickel	
-	insulator	2	POM	white	
-	shell	1	plastic	black/white	
-	contact pin	1	brass	nickel	
-	body	1	brass	nickel	
-	body	1	brass	nickel	
-	body	1	brass	nickel	
NO.	Description	Unit	Materials	Finish	Drawing No.

DIMENSIONS ARE IN MILLIMETERS
UNLESS OTHERWISE PECIFIED
(一般公差)
0.5~6 = ±0.2
>6~30 = ±0.4
>30~120 = ±0.6
>120~315 = ±1
>315~1000 = ±1.6
ANGLES(角度) = ±5°

SCALE	2 : 1	UNIT	MM
-------	-------	------	----

APPROVED	
CHECKED	
DRAWN	<i>Lala</i>
DATE	2007. 12. 17

www.allconnectors.de Tel.: 0049 711 7009503 70794 Filderstadt - Germany	info@allconnectors.de Fax: 0049 711 7009504 Kettenerstr. 25
TITLE	AUDIO PLUG
DRAWING NO.	AP3.5-252BK/WEPLN-Stereo-5.0
FILE NO.	DRAWINGAUDIO\AP\AP3.5-252BK/WEPLN-Stereo-5.0