

JMD8C POWER CONNECTOR

[Back to product list](#)

Type

插座 (装配插针) :JMD-8CZ

插头 (装配插孔) :JMD-8CT



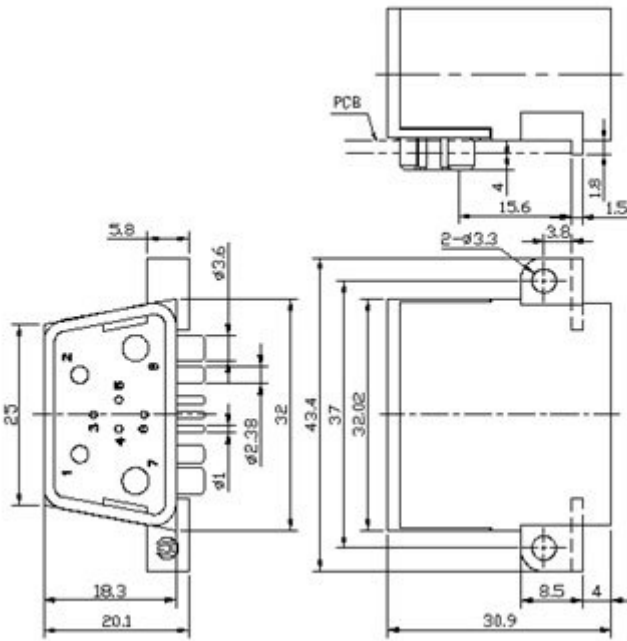
Operating Environment

Operating Temperature	-55 to + 125 °C
Relative Humidity	98% (40 °C)
Vibration	10 to 2,000Hz (a = 147m/s ²)
Shock	Acceleration 980m/s ²

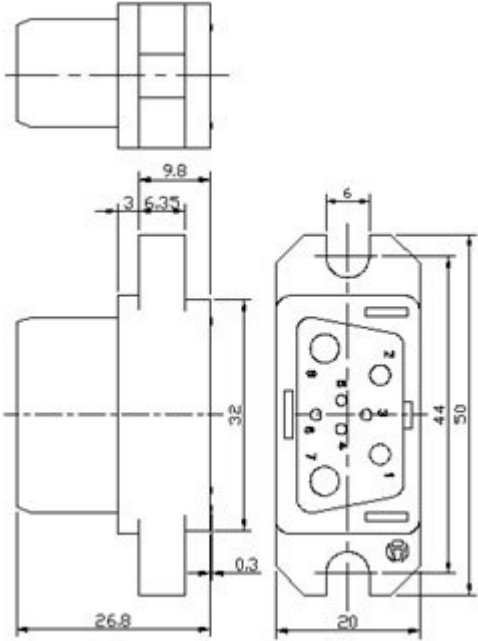
Main Technical Specifications

Insulation Resistance		≥ 1,000MΩ		
Mechanical Life		1,000 times		
Housing Material		PET G30 UL94V-0 Black		
Contact	Spec.	Signal Contact		Power Contact
		#20	#12	#8
	Quantity	4	2	2
	Rated Current	5A	35A	75A
	Rated Voltage	50V	180V	180V
	Contact Resistance	≤5.0mΩ	≤1.0mΩ	≤0.75mΩ
	Withstand Voltage	1,000V	1,300V	1,300V
	Surface Material	Gold plated over nickel		Silver plated over nickel
	Terminal Style	Pins: PCB Tail (Bending Pin); Sockets: Crimping, #8 has threads.		
	Material	Pin and Socket	Brass or copper	
Crown Spring		Beryllium bronze		

External Sizes and Installation Dimensions (mm)



JMD-8CZ



JMD-8CT