

## JMD3A POWER CONNECTOR

[Back to product list](#)



### Type

The Male Connector: JMD-3AZ

The Female Connector: JMD-3AT

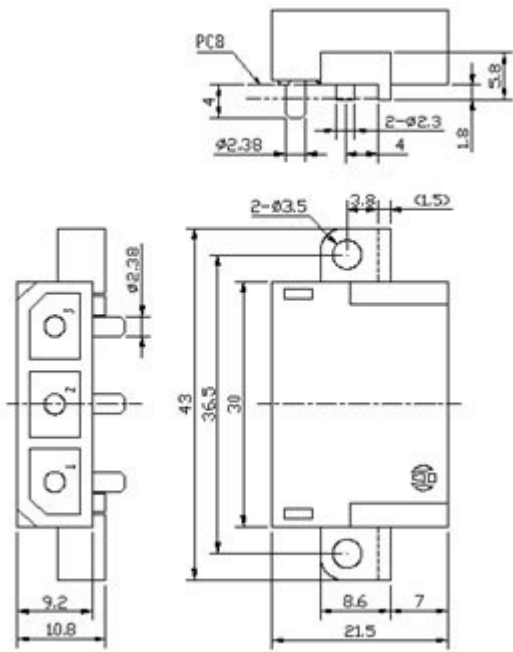
### Operating Environment

Operating Temperature	-55~+125 °C
Relative Humidity	98% (40 °C)
Vibration	10 to 2,000Hz (a = 147m/s <sup>2</sup> )
Shock	Acceleration 980m/s <sup>2</sup>

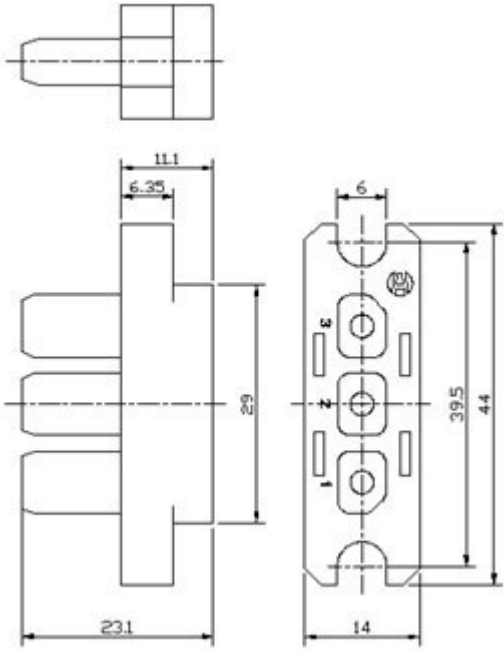
### Main Technical Specifications

Insulation Resistance		≥ 1000MΩ
Mechanical Life		1000 次
Housing Material		PET G30 UL94V-0 Black
Contact	Spec.	Power Contact
		12#
	Quantity	3
	Rated Current	35A
	Rated Voltage	400V
	Contact Resistance	≤1.00mΩ
	Withstand Voltage	2000V
	Surface Material	Silver plated over nickel
	Terminal Style	Pins: PCB Tail (Bending Pin); Sockets: Crimping, PCB Tail, Solder Cup
	Material	Pin and Socket
Crown Spring		Beryllium bronze

External Sizes and Installation Dimensions (mm)



JMD-3AZ



JMD-3AT