

JMD20 POWER CONNECTOR

[Back to product list](#)

Type

The Male Connector: JMD-20Z

The Female Connector: JMD-20T



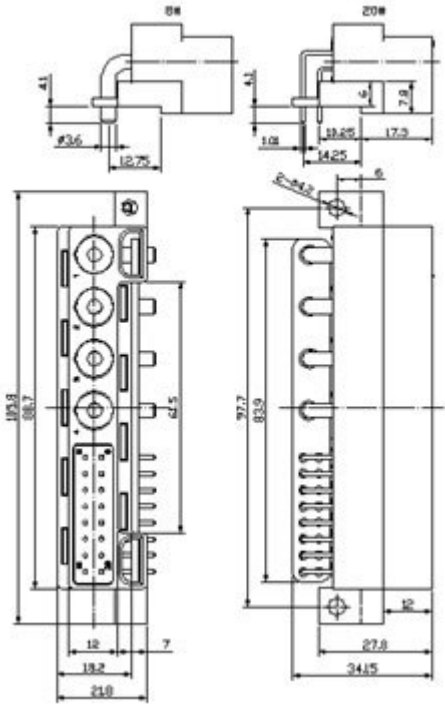
Operating Environment

Operating Temperature	-55 to + 125 °C
Relative Humidity	98% (40 °C)
Vibration	10 to 2,000Hz (a = 147m/s ²)
Shock	Acceleration 980m/s ²

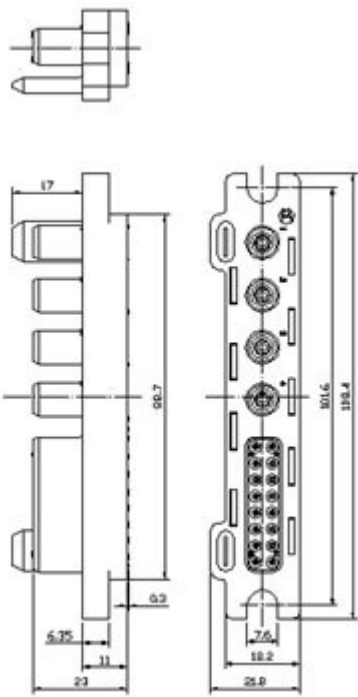
Main Technical Specifications

Insulation Resistance		≥ 1,000MΩ	
Mechanical Life		1,000 times	
Housing Material		PET G30 UL94V-0 Black	
Contact	Spec.	Signal Contact	Power Contact
		#20	#8
	Quantity	16	4
	Rated Current	5A	70A
	Contact Resistance	≤5.0mΩ	≤0.75mΩ
	Withstand Voltage	1,000V	2,000V
	Surface Material	Gold plated over nickel	Silver plated over nickel
	Terminal Style	Pins: PCB Tail (Bending Pin); Sockets: Crimping, PCB Tail, Solder Cup	
	Material	Pin and Socket	Brass or copper
Crown Spring		Beryllium bronze	

External Sizes and Installation Dimensions (mm)



JMD-20Z



JMD-20T