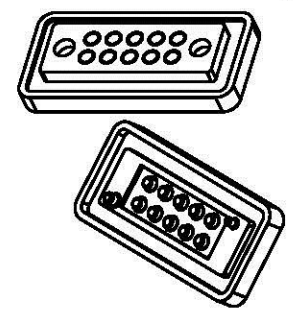
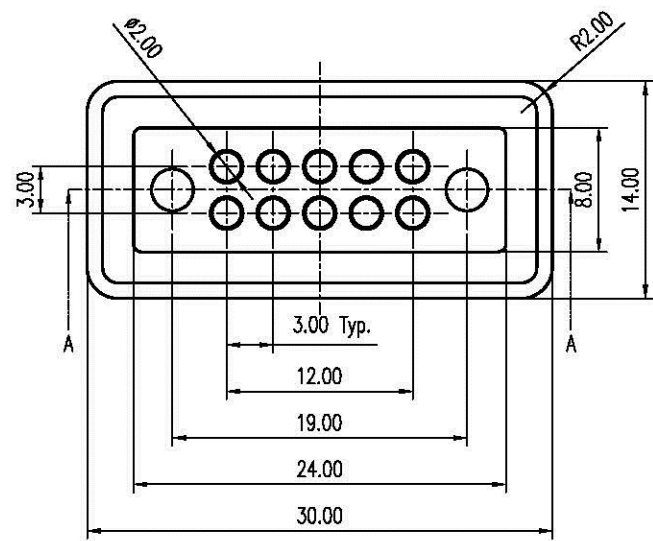
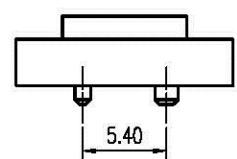
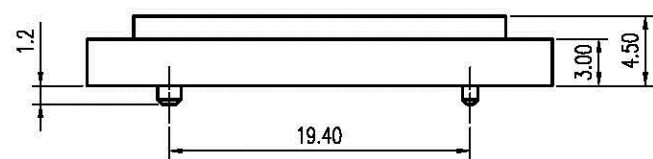


REV.	DESCRIPTION	ECN NO.	DATE	DRAWER
A	New Release		07/07/2010	Tom

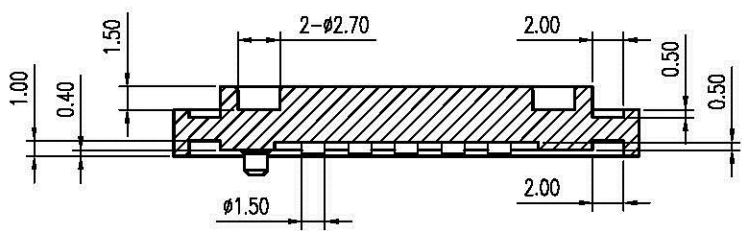
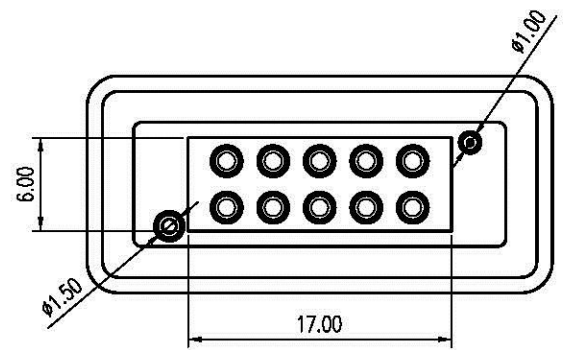


Notes:

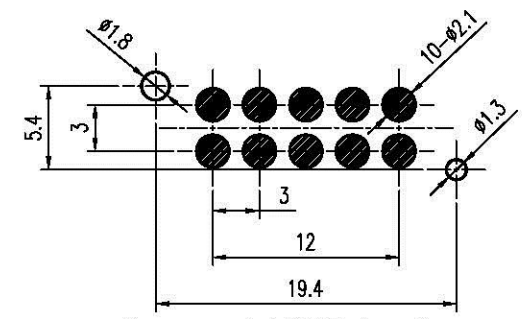
- Material :  
Housing : Thermoplastic(LCP) UL 94V-0, Black  
Terminal : Copper Alloy
- Electrical :  
2-1. Contact Resistance: 30 mΩ Max. (After Test 50 mΩ Max.)  
2-2. Insulation Resistance: 100 MΩ Min. at 500 V DC / 2 minute  
2-3. Dielectric Withstanding Voltage: No breakdown at 500 V RMS
- Rating  
3-1. Current Rating : 5 A Max. / Pin  
3-2. Voltage Rating : 125 V AC / 1 minute.  
3-3. Operating temperature : -55 °C to +105 °C
- Mechanical  
Contact Retention Force: 600g Min.
- Finish :  
Terminal : 20u" Gold Plated over 50u" Min. Ni
- Order Information :



PRO-21001-00 T 6 A  
T: RoHS (for High Temperature)  
Packing  
T : Tube  
Plating  
6 : 20u" Gold Plated over 50u" Min. Ni



Section A-A



Recommended P.C.B. Layout  
Layout Tolerance = ± 0.05 mm

DIMENSION IN mm [inch]		All Connectors		Title	
Tolerance unless otherwise specified		www.allconnectors.de info@allconnectors.de		3.0mm Pitch Machine Pin Conn.	
X. ± 0.38	X.' ± 10'	20254 FB (11/2011) Germany		Dwg No. TPRO-21001-00T6A	Scale: 2 : 1
X.X ± 0.25	X.X' ± 5'	CUSTOMER DRAWING		File No. P10007	Size: A 4
X.XX ± 0.20	X.XX' ± 2'	Approver:	Checker:	Drawer: Tom	Rev : A
X.XXX ± 0.10	X.XXX' ±			07/07/2010	Sheet: 1 / 1