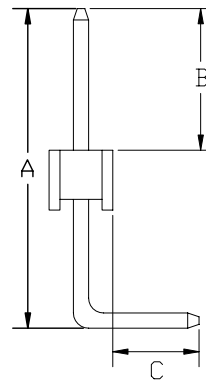
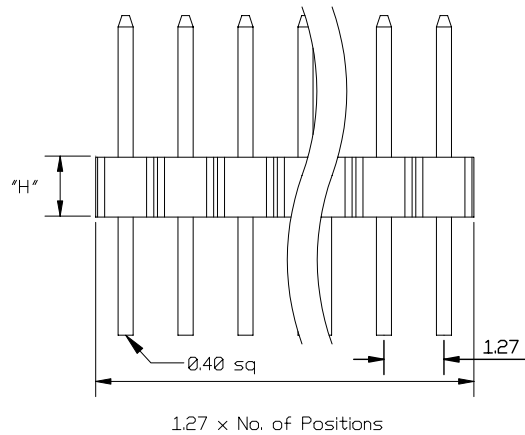
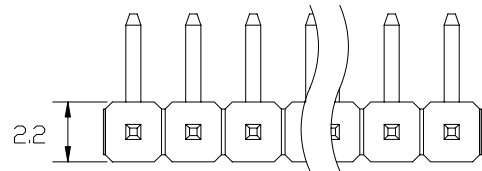


RoHS compliant

SPECIFICATION

Current Rating: 1 Amp
 Insulation Resistance: 5000 Megohms min
 Contact Resistance: 20 m ohms Max
 Dielectric Withstanding: AC 500 V
 Operating Temperature: -65 ° C to +125° C
 Contact Material: Brass
 Insulator Material: High Temperature Plastic
 UL94V-0



Ordering Code:

CPR01- X - X - A - X - X - X
 ① ② ③ ④ ⑤ ⑥ ⑦

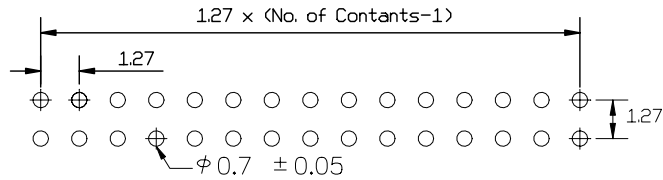
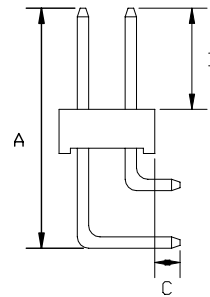
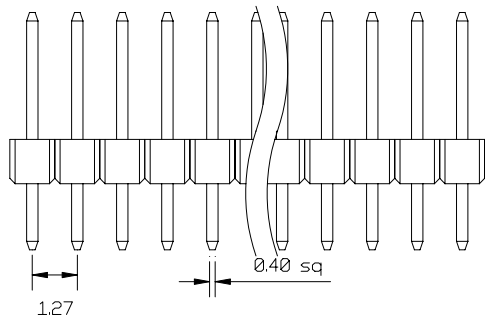
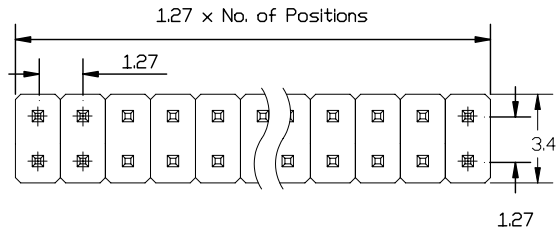
- ① Series No:
- ② No. of Contact
01 TO 40
- ③ Contact Plating
A: Gold Flash
E: 3u" Gold
B: 10u" Gold
C: 15u" Gold
- ④ Connector Type
A: Single Row
- ⑤ Body Height
H1: 1.1mm
H2: 1.5mm
H3: 2.5mm
- ⑥ Pin Length
A/B/C Please mark the desired length in the A/B/C
- ⑦ Code Packing
0: Bag

UNLESS OTHERWISE SPECIFIED TOLERANCE		 <small>www.allconnectors.eu info@allconnectors.eu Tel. +49 (0)711 / 358 110 20 Fax +49 (0)711 / 358 110 25</small>
ANG. 0. 0 ±0.25 .00 ±0.2		
SCALE: AS SHOWN	UNIT: mm	
DRAWN		TITLE: 1.27 mm Pin Header
CHECKED		Single Row, Right Angle Type
APPROVED		DRAWN NO: CPR01-XXAXX-1
REV	DESCRIPTION	DATE
		PRODUCT NO. CPR01-XXAXX

RoHS compliant

SPECIFICATION

Current Rating: 1 Amp
 Insulation Resistance: 5000 Megohms min
 Contact Resistance: 20 m ohms Max
 Dielectric Withstanding: AC 500 V
 Operating Temperature: -65 ° C to +125° C
 Contact Material: Brass
 Insulator Material: High Temperature Plastic
 UL94V-0



Recommended P.C.B Layout

Ordering Code:

CPR01- X - X - B - X - X - X
 ① ② ③ ④ ⑤ ⑥ ⑦

- ① Series No:
- ② No. of Contact: 02 TO 80
- ③ Contact Plating:
 A: Gold Flash
 E: 3u" Gold
 B: 10u" Gold
 C: 15u" Gold
- ④ Connector Type:
 B: Dual Row
- ⑤ Body Height:
 H1: 1.1mm
 H2: 1.5mm
 H3: 2.5mm
- ⑥ Pin Length:
 A/B/C Please mark the desired length in the A/B/C
- ⑦ Code Packing:
 0: Bag

UNLESS OTHERWISE SPECIFIED TOLERANCE ANG. 0. 0 ±0.25 00 ±0.2	All connectors <small>www.allconnectors.eu info@allconnectors.eu Tel. +49 (0)711 / 358 110 20 Fax +49 (0)711 / 358 110 25</small>
DRAWN	TITLE: 1.27 mm Pin Header Dual Row, Right Angle Type
CHECKED	
APPROVED	DRAWN NO: CPD01-XXBXXX-1
REV	PRODUCT NO. CPD01-XXBXXX

REV	DESCRIPTION	DATE
-----	-------------	------