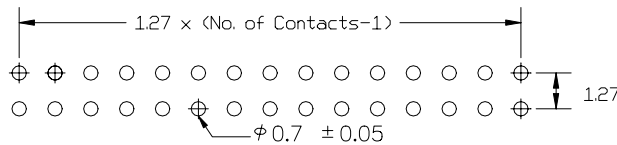
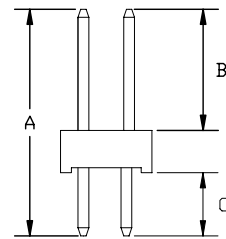
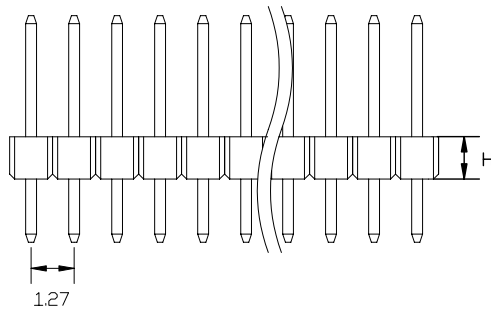
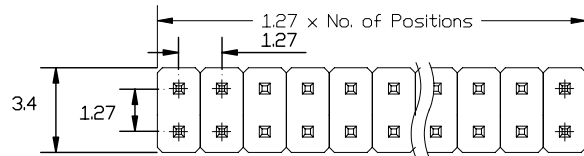


RoHS compliant

# SPECIFICATION

Current Rating: 1 Amp  
 Insulation Resistance: 5000 Megohms min  
 Contact Resistance: 20 m ohms Max  
 Dielectric Withstanding: AC 500 V  
 Operating Temperature: -65 ° C to +125° C  
 Contact Material: Brass  
 Insulator Material: High Temperature Plastic  
 UL94V-0



Recommended P.C.B Layout

Ordering Code:

CPD01- X - B - X - X - X - X  
 ① ② ③ ④ ⑤ ⑥ ⑦

- ① Series No:
- ② No. of Contact: 02 TO 80
- ③ Connector Type: B: Dual Row
- ④ Contact Plating: A: Gold Flash, E: 3u" Gold, B: 10u" Gold, C: 15u" Gold
- ⑤ Body Height: H1: 1.1mm, H2: 1.5mm, H3: 2.5mm
- ⑥ Pin Length: A/B/C Please mark the desired length in the A/B/C
- ⑦ Code Packing: 0: Bag

UNLESS OTHERWISE SPECIFIED TOLERANCE		 <small>www.allconnectors.eu   info@allconnectors.eu                  Tel. +49 (0)711 / 358 110 20   Fax +49 (0)711 / 358 110 25</small>
ANG. 0. 0 ±0.25 .00 ±0.2		
SCALE: AS SHOWN	UNIT: mm	TITLE: 1.27 mm Pin Header, Straight Type Dual Row
DRAWN	CHECKED	DRAWN NO: CPD01-XBXXXX-1
APPROVED	DATE	PRODUCT NO. CPD01-XBXXXX

REV	DESCRIPTION	DATE