

PCB LAYOUT COMPONENT SIDE

SPECIFICATIONS

Electrical

Current Rating: 7A AC, DC

Voltage Rating: 250V AC, DC

Operating Temp.: -25°C ~ +85°C

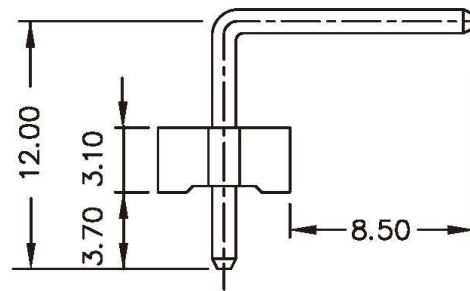
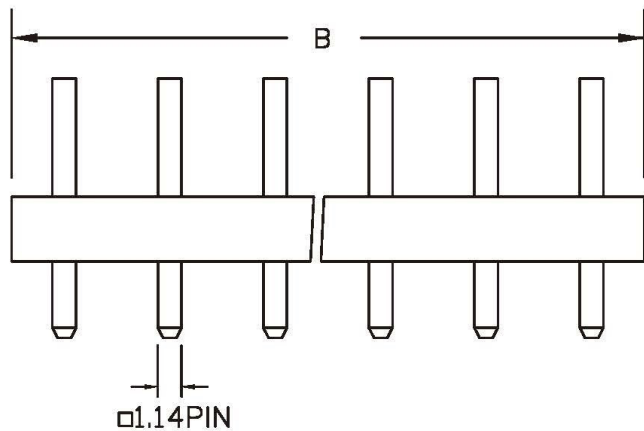
Insulation Resistance: 1000MΩ / min.

Dielectric Withstanding Voltage: 1500V AC/ min.

Contact Resistance: 10mΩ / max.

Material

Material: Nylon66, UL94V-2



Poles	Dimension mm (in.)		Part No.	Note.
	A	B		
2	5.08	10.30	LKX-R-02	
3	10.16	15.40	LKX-R-03	
4	15.24	20.50	LKX-R-04	
5	20.32	25.60	LKX-R-05	
6	25.40	30.70	LKX-R-06	
7	30.48	35.80	LKX-R-07	
8	35.56	41.00	LKX-R-08	
9	40.64	46.10	LKX-R-09	
10	45.72	51.20	LKX-R-10	
11	50.80	56.30	LKX-R-11	
12	55.88	61.40	LKX-R-12	

All Connectors

www.allconnectors.de
Tel.: 0049 711 7009503
70794 Filderstadt - Germany

info@allconnectors.de
Fax: 0049 711 7009504
Kettnerstr. 25

RoHS Compliant

DRAWING BY CY

CHECKED BY GENIUS

UNIT / mm SCALE 1 : 1

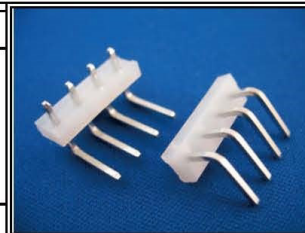
DATE

SIZE A4

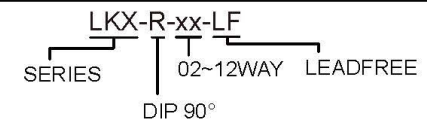
TOLERANCES ARE

X ±
X ± 0.50
.XX ± 0.10
.XXX ±
ANG ±

PROJECTION



ORDER INFORMATION



DESCRIPTION: 5.08mm Wire-to-Board Header Dip 90° Type