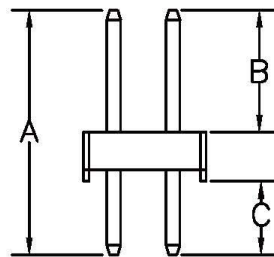
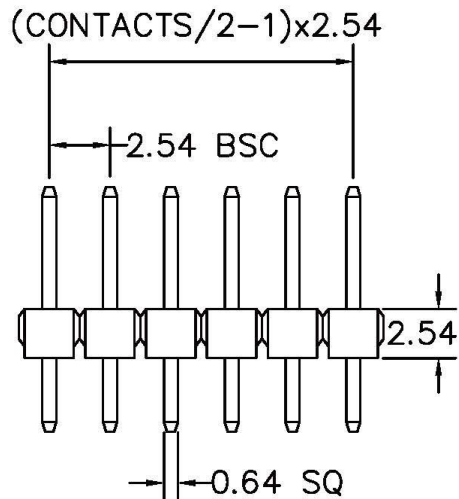


RECOMMENDED P.C.B LAYOUT



A: 11.60 mm B: 6.00 mm C: 3.05 mm

| CONTACTS | 2X21 |
|----------|------|
| 2X2 | 2X22 |
| 2X3 | 2X23 |
| 2X4 | 2X24 |
| 2X5 | 2X25 |
| 2X6 | 2X26 |
| 2X7 | 2X27 |
| 2X8 | 2X28 |
| 2X9 | 2X29 |
| 2X10 | 2X30 |
| 2X11 | 2X31 |
| 2X12 | 2X32 |
| 2X13 | 2X33 |
| 2X14 | 2X34 |
| 2X15 | 2X35 |
| 2X16 | 2X36 |
| 2X17 | 2X37 |
| 2X18 | 2X38 |
| 2X19 | 2X39 |
| 2X20 | 2X40 |

MATERIAL

HOUSING : 30% Glass fiber PBT

MATERIAL

HOUSING : NYLON-6T,UL94V-0

Contact pin: Copper Alloys .Gold Flash

SPECIFICATION

CURRENT: 3A

OPERATING TEMPERATURE: -55°C TO +105°C

CONTACT RESISTANCE : 20 MILLIOHMS MAX

INSULATION RESISTANCE : 1000 MEGAOHMS MIN

WITHSTANDING VOLTAGE: AC 1000V RMS

RoHS Compliant

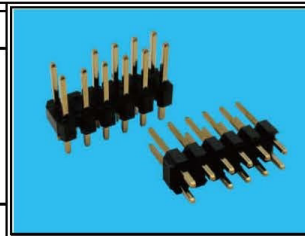
All Connectors

www.allconnectors.de info@allconnectors.de
Tel.: 0049 711 7009503 Fax: 0049 711 7009504
70794 Filderstadt - Germany Kettenerstr. 25

DRAWING BY CY
CHECKED BY GENIUS
UNIT/mm SCALE 1:1
DATE
SIZE A4

TOLERANCES ARE
X ±
.X ± 0.38
.XX ± 0.25
XXX ±
ANG ±

PJECTION



ORDER INFORMATION

H-Dxxx-2XxxE4-LF

SERIES DIP 180° LEADFREE
EMPTY #4

BLANK:STANDARD PBT N6T:NYLON-6T 2X02:04WAY 2X40:80WAY

DESCRIPTION: