

MATERIAL

Insulator : Nylon 6T

Contact Pin : Brass

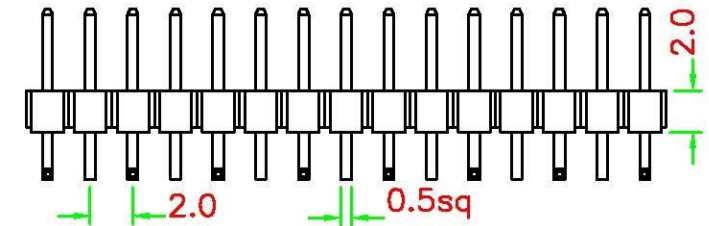
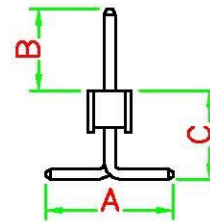
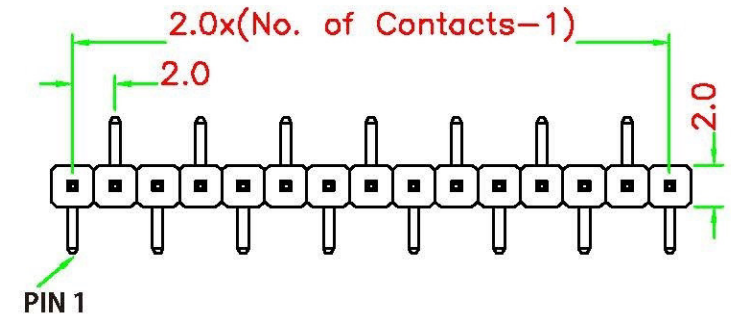
SPECIFICATION

Current Rate : 1 AMP

Insulation Resistance : 5000MΩ Min. at DC 500V

Contact Resistance : 20mΩ Max. at DC 100mA

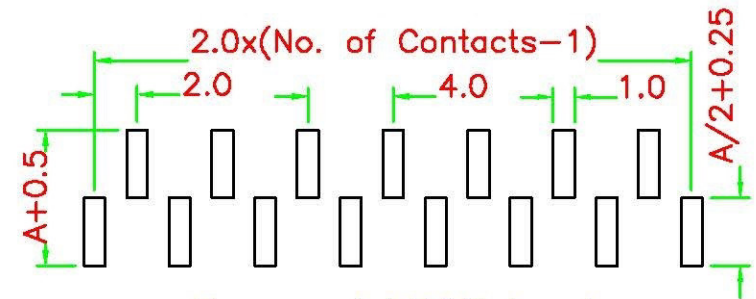
Operation Temperature : -55°C to +105°C



PART NO.

M-V22X-1XxxL : A=4.2 B=4.0 C=2.2

M-V27X-1XxxL : A=4.2 B=4.0 C=2.7



Recommended P.C.B. Layout

RoHS Compliant

TOLERANCES ARE

All Connectors

DRAWING BY CY

X.±

CHECKED BY GENIUS

X±

UNIT / mm

SCALE 1 : 1

.XX±

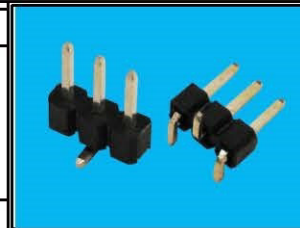
DATE

.XXX±

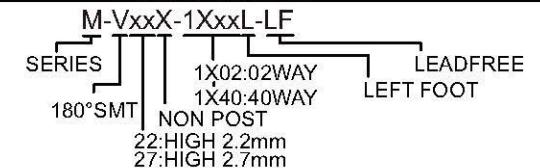
SIZE A4

P PROJECTION

ANG ±



ORDER INFORMATION



DESCRIPTION: 2.0MM PIN HEADER SMT TYPE

www.allconnectors.de

info@allconnectors.de

tel.: 0049 711 409506

fax: 0049 711 409504

70794 Tübingen - Germany

Gelmershausen