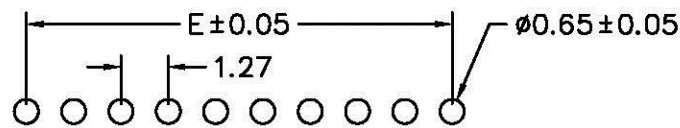
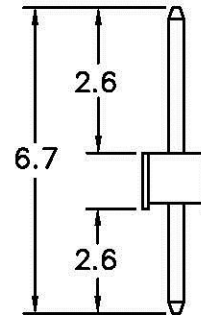
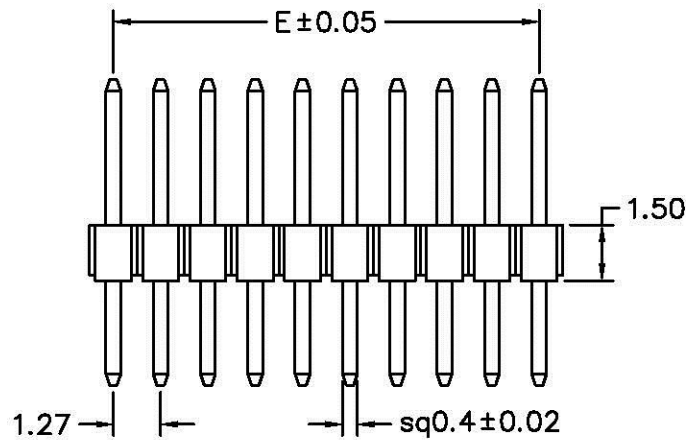


MATERIAL

Insulator : NYLON 46
Contact Pin : Brass

SPECIFICATION

Current Rate : 1 AMP
Insulation Resistance : 5000MΩMin. at DC 500V
Contact Resistance : 20mΩMax. at DC 100mA
Dielectric Voltage : AC 500V for one minute
Operation Temperature : -40°C to + 105°C



Recommended P.C.B Layout

PA-D15-2Xxx-LF
LEADFREE

RoHS Compliant

POLES	DIM E	POLES	DIM E
		18	21.59
2	1.27	19	22.86
3	2.54	20	24.13
4	3.81	21	25.40
5	5.08	22	26.67
6	6.35	23	27.94
7	7.62	24	29.21
8	8.89	25	30.48
9	10.16	26	31.75
10	11.43	27	33.02
11	12.70	28	34.29
12	13.97	29	35.56
13	15.24	30	36.83
14	16.51	31	38.10
15	17.78	32	39.37
16	19.05	33	40.64
17	20.32		

Allconnectors

www.allconnectors.de
Tel.: 0349 211 7005503
20794 Pilsbachtal - Germany

info@allconnectors.de
Fax: 0349 211 7005504
Kellernstr. 25

PART NO. PA-D15-1Xxx

DWG NO. PA-D15-1Xxx

FILE NO.

UNIT / mm

SCALE 1:1

APPROVED BY CY

DRAWING BY

PROJECTION



TOLERANCES ARE

.0 = ±.30
.00 = ±.15
.000 = ±.XXX
.0000 = ±.
ANG. = ±3'

DESCRIPTION:

PIN HEADER 1.27*1.27mm
STRAIGHT TYPE, SINGLE ROW

AREA

REVISIONS

HK

DATE