

REV.	ECN.NO.	DATE
A	RELEASED	06/21/07

**NOTES:**

**\*Material**

Housing: Nylon46+30%G.F, UL 94V-0 Rated. Color: Black.  
 Contact: Brass.  
 Plating: Gold plating over Nickel on contact Area; Tin plating on solder tail.

**\*Mechanical**

Insertion Force: 1.15N max per contact pair;  
 Withdrawal Force: 0.15N min per contact pair;  
 Contact Retention Force: 4.9N min per contact;

**\*Electrical Specification**

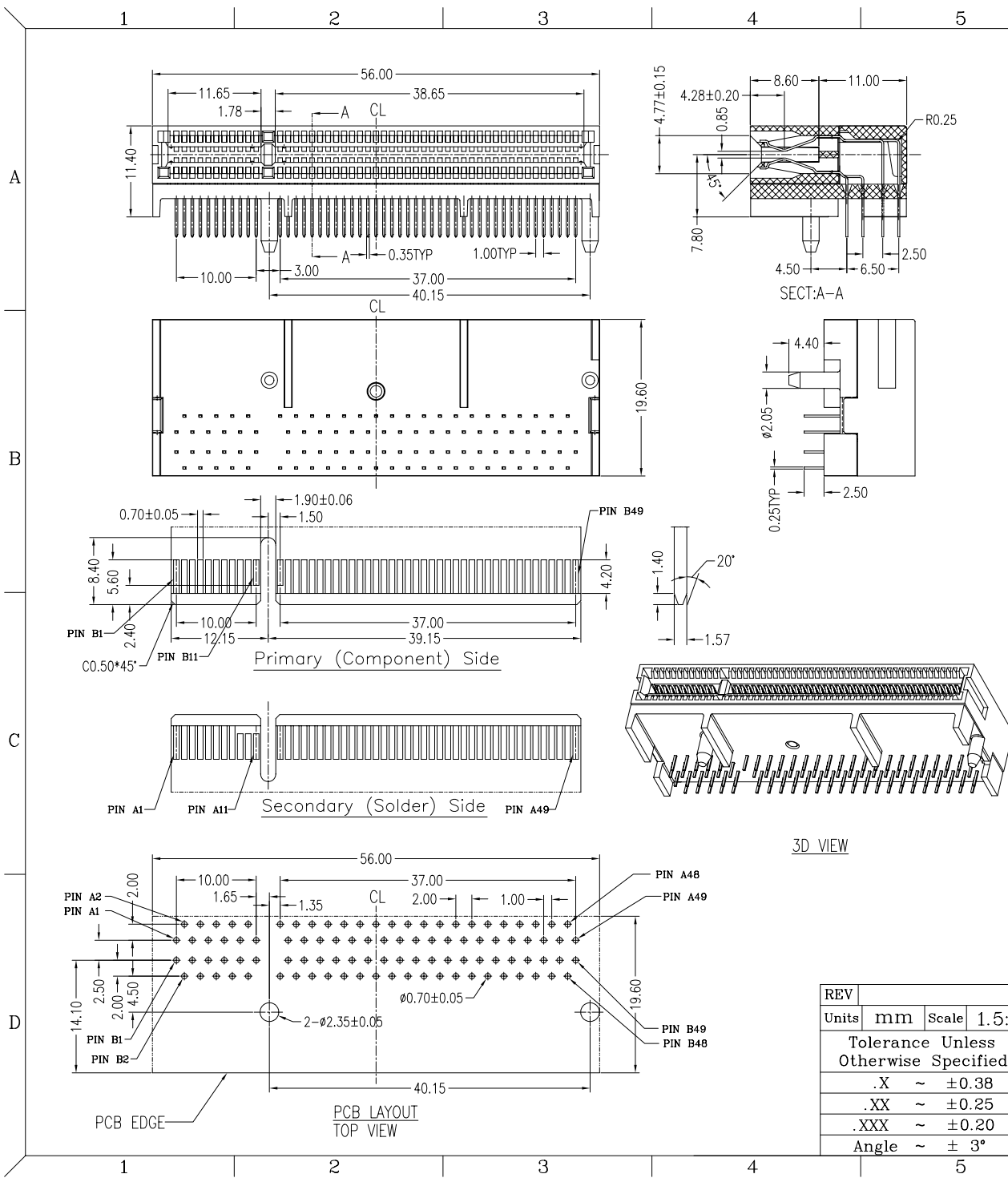
Contact Resistance : 30 Milliohms Max.  
 Current Resistance : 1.1 Ampere  
 Insulation Resistance : 1000 Megohms Min, At 500V AC.

**\*Environmental**

Operating Temperature : -55°C to +105°C

**\*How to Order:**

Series NO. WPRS-098 A N4 1 B 6 U  
 Number of Contacts \_\_\_\_\_  
 Gold A:Flash B:5u" C:10u" \_\_\_\_\_  
 D:15u" E:20u" F:30u" \_\_\_\_\_  
 N4:Nylon46 \_\_\_\_\_  
 1:Black \_\_\_\_\_  
 U:Lead Free  
 6:Solder Height 2.50 (Add height)(left key)  
 B:Brass



REV	Units mm Scale 1.5:1		Drawing By	Data	 <small>www.allconnectors.eu   info@allconnectors.eu</small> <small>Tel. +49 (0)711 / 358 110 20   Fax +49 (0)711 / 358 110 25</small>		
	Tolerance Unless Otherwise Specified		Andy	06/21/07			
	.X	~ ±0.38	Reviewed By	Data	Date	06/21/07	
	.XX	~ ±0.25	Roger	06/21/07	Sheet	1 of 1	
	.XXX	~ ±0.20	Approval By	Data	Third Angle Projection		
	Angle	~ ± 3°	Richard	06/21/07	Title		
					PCI Express R/A DIP Type		
					Add Height 98P(left key) CRT		
					Drawing No.	WPRS-098PS-AN-W086	
					REV	A	