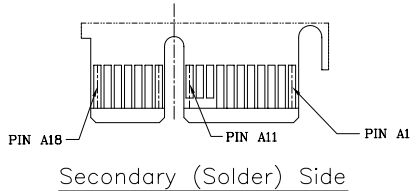
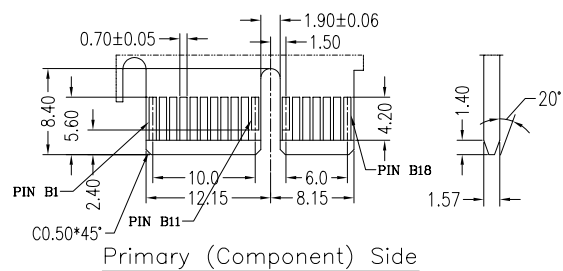
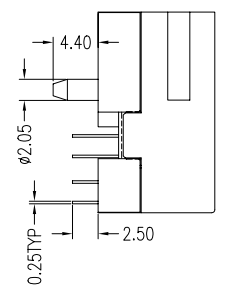
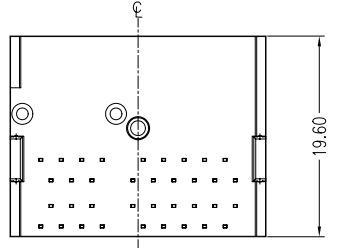
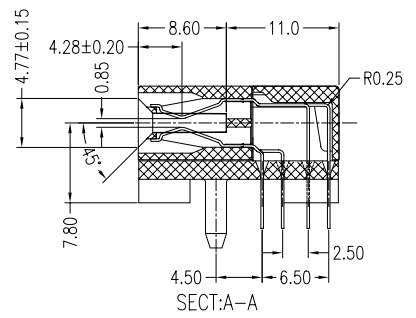
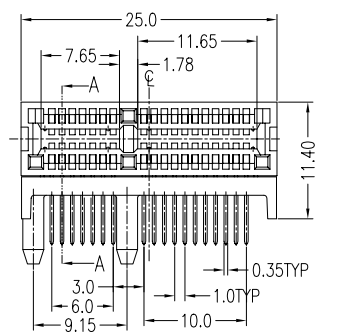
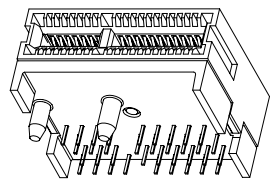


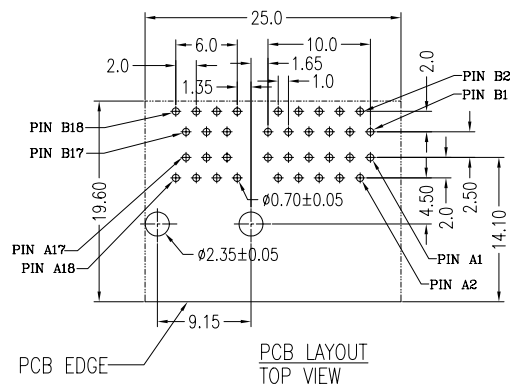
REV.	ECN.NO.	DATE
A	RELEASED	10/15/07



Secondary (Solder) Side



3D VIEW



PCB LAYOUT TOP VIEW

NOTES:

***Material**

Housing: Nylon46+30%G.F, UL 94V-0 Rated. Color: Black
 Contact: Brass.
 Plating: Gold plating over Nickel on contact Area; Tin plating on solder tail.

***Mechanical**

Insertion Force: 1.15N max per contact pair;
 Withdrawal Force: 0.15N min per contact pair;
 Contact Retention Force: 4.9N min per contact;

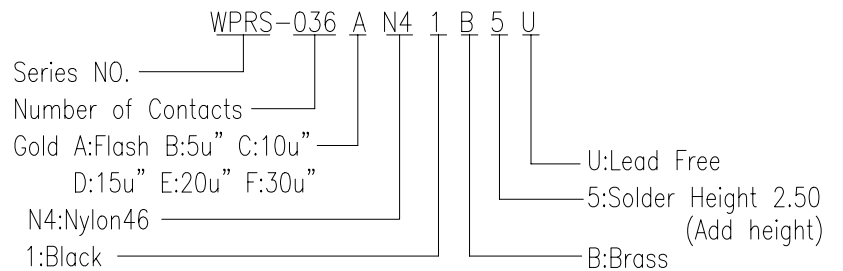
***Electrical Specification**

Contact Resistance : 30 Milliohms Max.
 Current Resistance : 1.1 Ampere
 Insulation Resistance : 1000 Megohms Min, At 500V AC.

***Environmental**

Operating Temperature : -55°C to +105°C

***How to Order:**



REV		Units		mm	Scale	1.5:1	Drawing By		Data	 <small>www.allconnectors.eu info@allconnectors.eu Tel. +49 (0)711 / 358 110 20 / Fax +49 (0)711 / 358 110 25</small>			
Tolerance Unless Otherwise Specified		Wei				Data		10/15/07					
.X	±0.38		Reviewed By		Data		Date	10/15/07	Date	10/15/07	Title	PCI Express R/A DIP Type Add Height 36P	
.XX	±0.25		Roger		Data		Sheet	1 of 1	Third Angle Projection				
.XXX	±0.20		Approval By		Data								
Angle	± 3°		Tf		Data		10/15/07			Drawing No.	WPRS-036PS-AN-W099	REV	A