

| REV. | ECN.NO. | DATE |
|------|---------------------------|----------|
| A | RELEASED | 07/28/05 |
| B | Add Subtract | 08/01/05 |
| C | Revise Insulator Material | 05/18/06 |

NOTES:

***Material**

Body : Nylon6T or Nylon9T, UL 94V-0 Rated.
 Color: White or Black.
 Contacts: Brass or Phosphor Bronze.
 Plating: Gold plating over Nickel on contact area;
 Tin Plating On Solder Tail.
 CAV.NO.:A~H.

***Mechanical:**

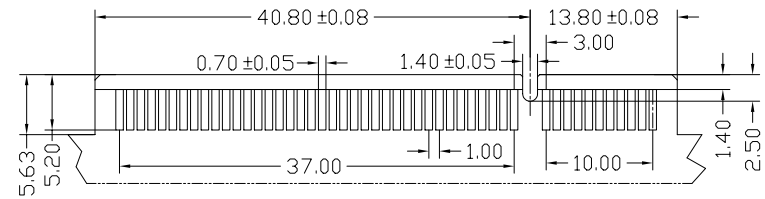
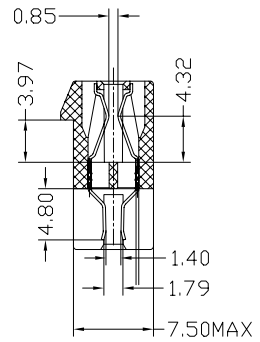
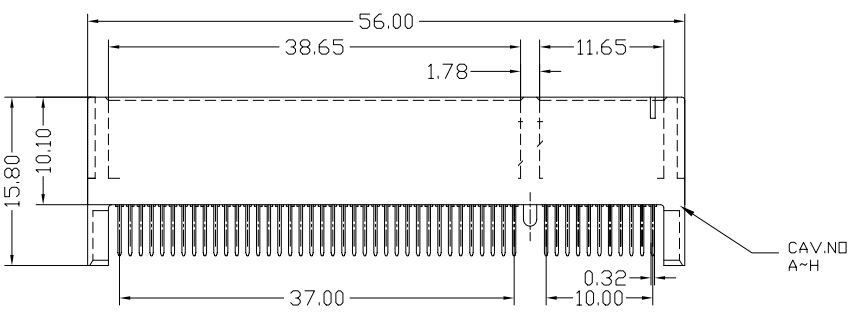
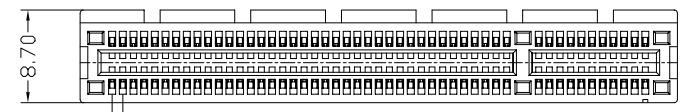
Insertion Force: 1.15N max per contact pair;
 Withdrawal Force: 0.15N min per contact pair;
 Contact Retention Force: 4.9N min per contact;

***Electrical Specification**

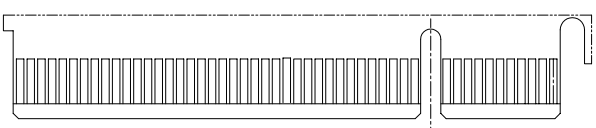
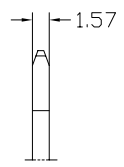
Contact Resistance : 30 Milliohms Max.
 Current Resistance : 1.1 Ampere
 Insulation Resistance : 1000 Megohms Min, At 500V AC.
 Operating Temperature : -55°c to +105°c

***How to order:**

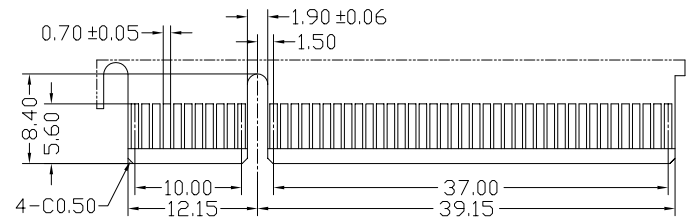
PCI Express — WPES-098 A N6 1 B 5 1 U S
 Strip Form Pin —
 Number of Contact —
 Gold A:Flash B:5u" C:10u"
 N6: Nylon6T N9:Nylon9T
 1:Black 3:White
 S:Subtract
 U:Lead Free
 1:None Post
 5:Straddle Type(Groove)
 B:Brass
 P:Phosphor Bronze



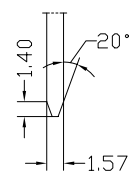
P.C.B. Layout For Straddle



SECONDARY (SOLDER) SIDE



PRIMARY (COMPONENT) SIDE



| REV | Revise Insulator Material | | Drawing By | Data | All Connectors | | Title | | |
|--------------------------------------|---------------------------|-------|-------------|----------|--|--------|------------------------|--|---|
| Units | mm | Scale | Andy | 05/18/06 | www.allconnectors.eu info@allconnectors.eu Tel. +49 (0)711 / 358 110 20 Fax +49 (0)711 / 358 110 25 | | Date | 05/18/06 | |
| Tolerance Unless Otherwise Specified | | | Reviewed By | Data | Sheet | 1 of 1 | Third Angle Projection | PCI Express Connector 98 Pin Strip Form Pin Straddle(Groove) | |
| .X | ~ | ±0.38 | Roger | 05/18/06 | | | | | |
| .XX | ~ | ±0.25 | Approval By | Data | | | | | |
| .XXX | ~ | ±0.20 | Tf | 05/19/06 | | | | | |
| Angle | ~ | ± 3° | | | | | Drawing No. | W050616 | |
| | | | | | | | | REV | C |