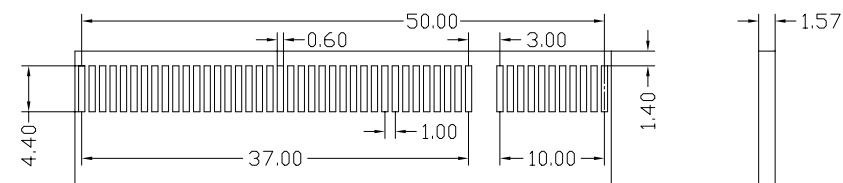
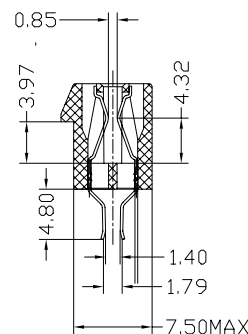
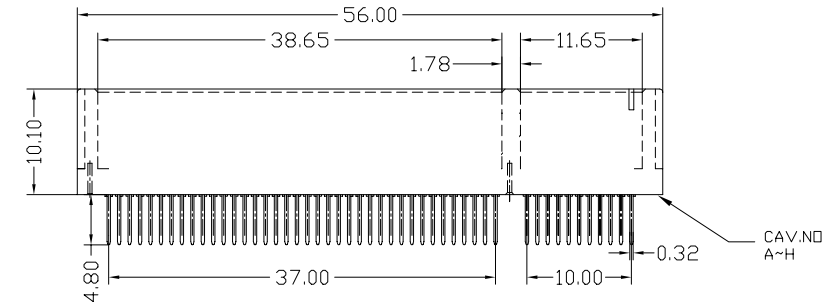
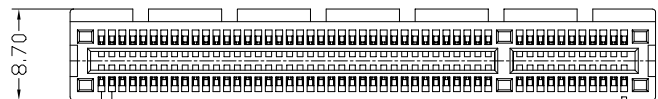
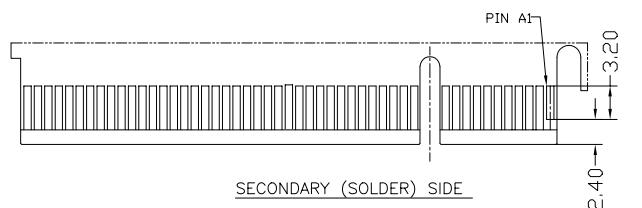


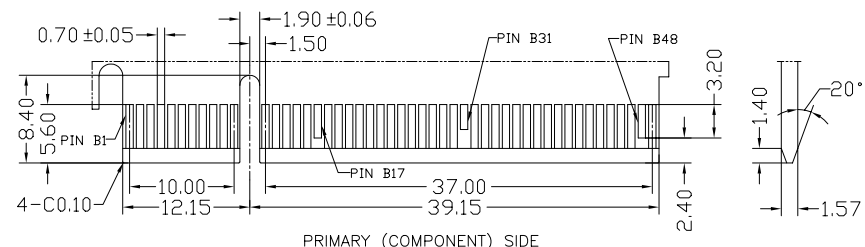
REV.	ECN.NO.	DATE
A	RELEASED	03/08/05
B	Add Nylon46	10/21/05
C	Revise Insulator Material and Body	05/18/06



P.C.B. Layout For Straddle



SECONDARY (SOLDER) SIDE



PRIMARY (COMPONENT) SIDE

NOTES:

***Material**

Body : Nylon6T or Nylon9T, UL 94V-0 Rated.
 Color: White or Black.
 Contacts: Brass or Phosphor Bronze.
 Plating: Gold plating over Nickel on contact area;
 Tin Plating On Solder Tail.
 CAV.NO.:A~H.

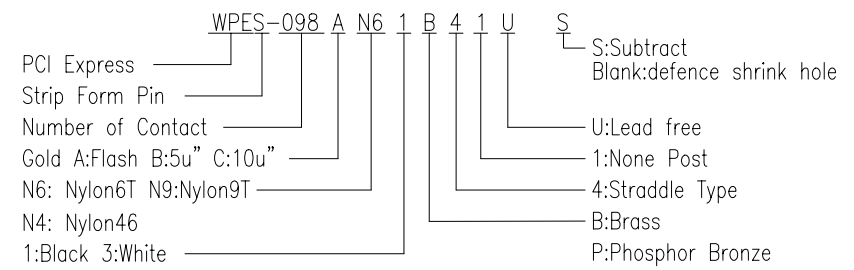
***Mechanical:**


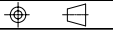
Insertion Force: 1.15N max per contact pair;
 Withdrawal Force: 0.15N min per contact pair;
 Contact Retention Force: 4.9N min per contact;

***Electrical Specification**

Contact Resistance : 30 Milliohms Max.
 Current Resistance : 1.1 Ampere
 Insulation Resistance : 1000 Megohms Min, At 500V AC.
 Operating Temperature : -55°c to +105°c

***How to order:**



REV	Revise Insulator Material and Subtract		Drawing By	Date	 <small>www.allconnectors.eu info@allconnectors.eu Tel: +49 (0)711 / 358 110 20 Fax +49 (0)711 / 358 110 25</small>		
Units	mm	Scale	Andy	05/18/06			
Tolerance Unless Otherwise Specified			Reviewed By	Date	Sheet	1 of 1	
	.X	~ ±0.38	Roger	05/18/06	Third Angle Projection		P/Name WPES-098PS-AN-W046 REV C
	.XX	~ ±0.25	Approval By	Date			
	.XXX	~ ±0.20	Tf	05/18/06			
	Angle	~ ± 3°					