

REV.	ECN.NO.	DATE
A	RELEASED	07/28/05
B	Add Subtract	08/01/05
C	Revise Insulator Material	05/18/06

NOTES:

***Material**

Body : Nylon6T or Nylon9T, UL 94V-0 Rated.
 Color: White or Black.
 Contacts: Brass or Phosphor Bronze.
 Plating: Gold plating over Nickel on contact area;
 Tin Plating On Solder Tail.
 CAV.NO.:A~H.

***Mechanical:**

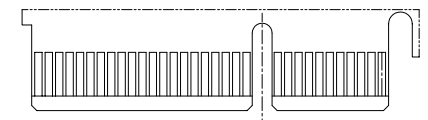
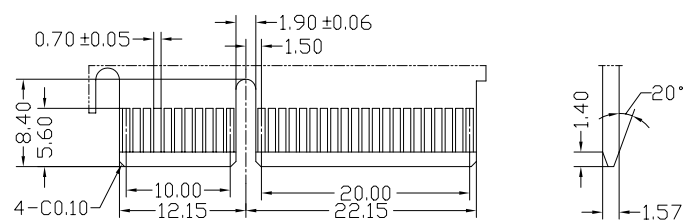
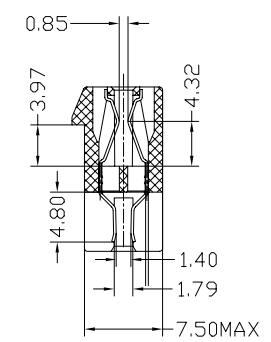
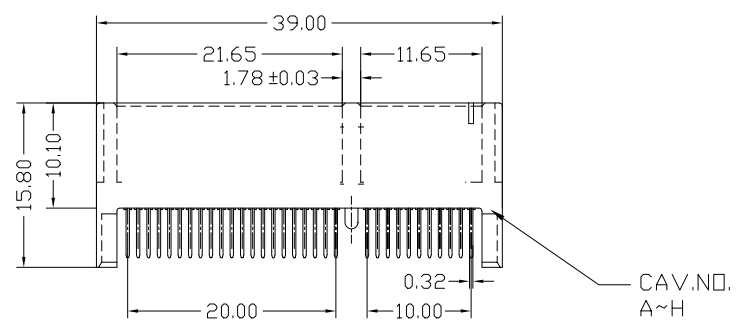
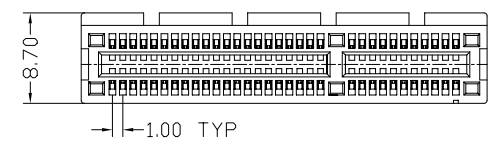
Insertion Force: 1.15N max per contact pair;
 Withdrawal Force: 0.15N min per contact pair;
 Contact Retention Force: 4.9N min per contact;

***Electrical Specification**

Contact Resistance : 30 Milliohms Max.
 Current Resistance : 1.1 Ampere
 Insulation Resistance : 1000 Megohms Min, At 500V AC.
 Operating Temperature : -55°C to +105°C

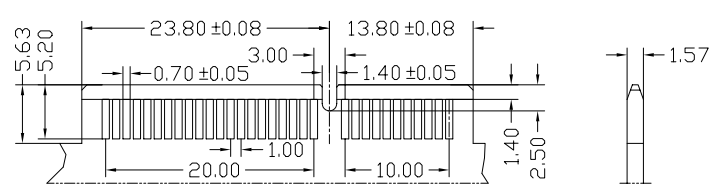
***How to order:**

WPES-064 A N6 1 B 5 1 U S
 PCI Express
 Strip Form Pin
 Number of Contact
 Gold A:Flash B:5u" C:10u"
 N6: Nylon6T N9:Nylon9T
 1:Black 3:White
 S:Subtract
 U:Lead Free
 1:None Post
 5:Straddle Type(Groove)
 B:Brass
 P:Phosphor Bronze



SECONDARY (SOLDER) SIDE

PRIMARY (COMPONENT) SIDE



P.C.B. Layout For Straddle

REV		Revise Insulator Material		Drawing By		Data		All Connectors					
Units	mm	Scale		Andy		05/18/06		www.allconnectors.eu info@allconnectors.eu Tel. +49 (0)711 / 358 110 20 Fax +49 (0)711 / 358 110 25					
Tolerance Unless Otherwise Specified				Reviewed By		Data		Date	05/18/06	Title		PCI Express Connector 64 Pin Strip Form Pin Straddle(Groove)	
.X ~ ±0.38				Roger		05/18/06		Sheet	1 of 1	Third Angle Projection		Drawing No.	W050616
.XX ~ ±0.25				Approval By		Data						REV	C
.XXX ~ ±0.20				Tf		05/19/06							
Angle ~ ± 3°													