

REV.	ECN.NO.	DATE
A	RELEASED	03/08/05
B	Add Nylon46	10/21/05

**NOTES:**

**\*Material**

Body : Nylon46+30%G.F or Nylon66+30%G.F, UL 94V-0 Rated.  
 Color: White or Black.  
 Contacts : Brass or Phosphor Bronze.  
 Plating: Gold plating over Nickel on contact area;  
 Tin Plating On Solder Tail.  
 CAV.NO.:A~H.

**\*Mechanical:**

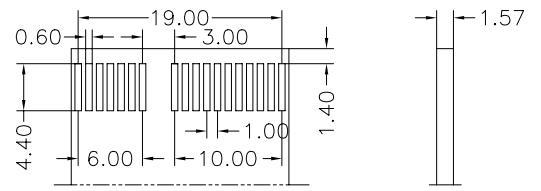
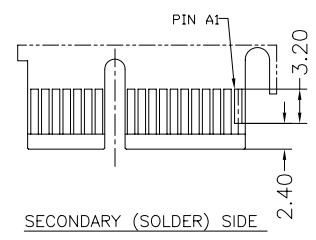
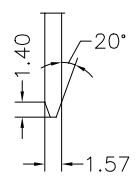
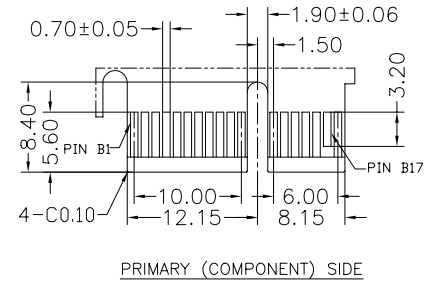
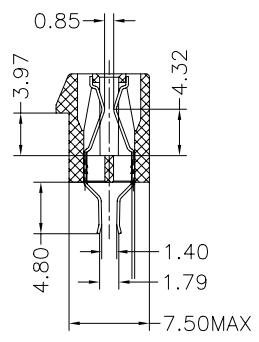
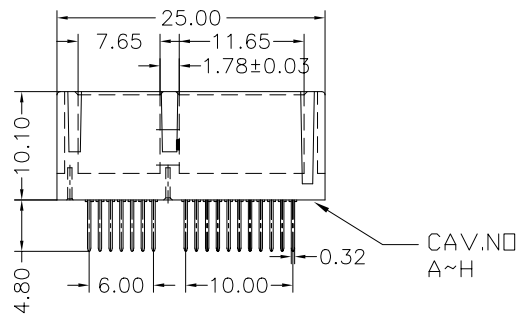
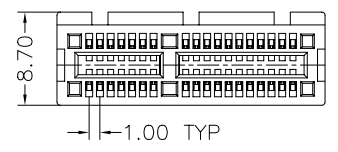
Insertion Force: 1.15N max per contact pair;  
 Withdrawal Force: 0.15N min per contact pair;  
 Contact Retention Force: 4.9N min per contact;


**\*Electrical Specification**

Contact Resistance : 30 Milliohms Max.  
 Current Resistance : 1.1 Ampere  
 Insulation Resistance : 1000 Megohms Min, At 500V AC.  
 Operating Temperature : -55°c to +105°c

**\*How to order:**

PCI Express WPES-036 A N4 1 B 4 1 U S  
 Strip Form Pin  
 Number of Contact  
 Gold A:Flash B:5u" C:10u"  
 N4:Nylon46 N:Nylon66  
 1:Black 3:White  
 S:Subtract  
 U:Sn Cu  
 Blank:Sn Pb  
 1:None Post  
 4:Straddle Type  
 B:Brass  
 P:Phosphor Bronze



REV	Add Nylon46		Drawing By	Data	 <small>www.allconnectors.au   info@allconnectors.au          Tel. +49 (0)711 / 358 110 20   Fax +49 (0)711 / 358 110 25</small>			
Units	mm	Scale	1:1	Lulu				Date
Tolerance Unless Otherwise Specified				Reviewed By	Data	Date	10/21/05	
.X	~	±0.38	Jerry	10/21/05	Sheet	1 of 1	Title PCI Express Connector 36 Pin Strip Form Pin Straddle(None Post)	
.XX	~	±0.25	Approval By	Data	Third Angle Projection			
.XXX	~	±0.20	Tf	10/21/05	F/Name		WPES-036PS-AN-W044 REV B	
Angle	~	± 3°						