

REV.	ECN.NO.	DATE
A	RELEASED	06/03/04
B	Add Subtract	05/30/06

NOTES:

***Material**

Body: Nylon66or46+30%G.F or PBT+30%G.F, UL 94V-0 Rated.
 Color: White or Black
 Contacts: Brass or Phosphor Bronze
 Plating: Gold plating over Nickel on contact area;
 Tin Plating on Solder tail.
 CAV.NO.:A~H.

***Mechanical:**

Insertion Force: 1.15N max per contact pair;
 Withdrawal Force: 0.15N min per contact pair;
 Contact Retention Force: 4.9N min per contact;

***Electrical Specification**

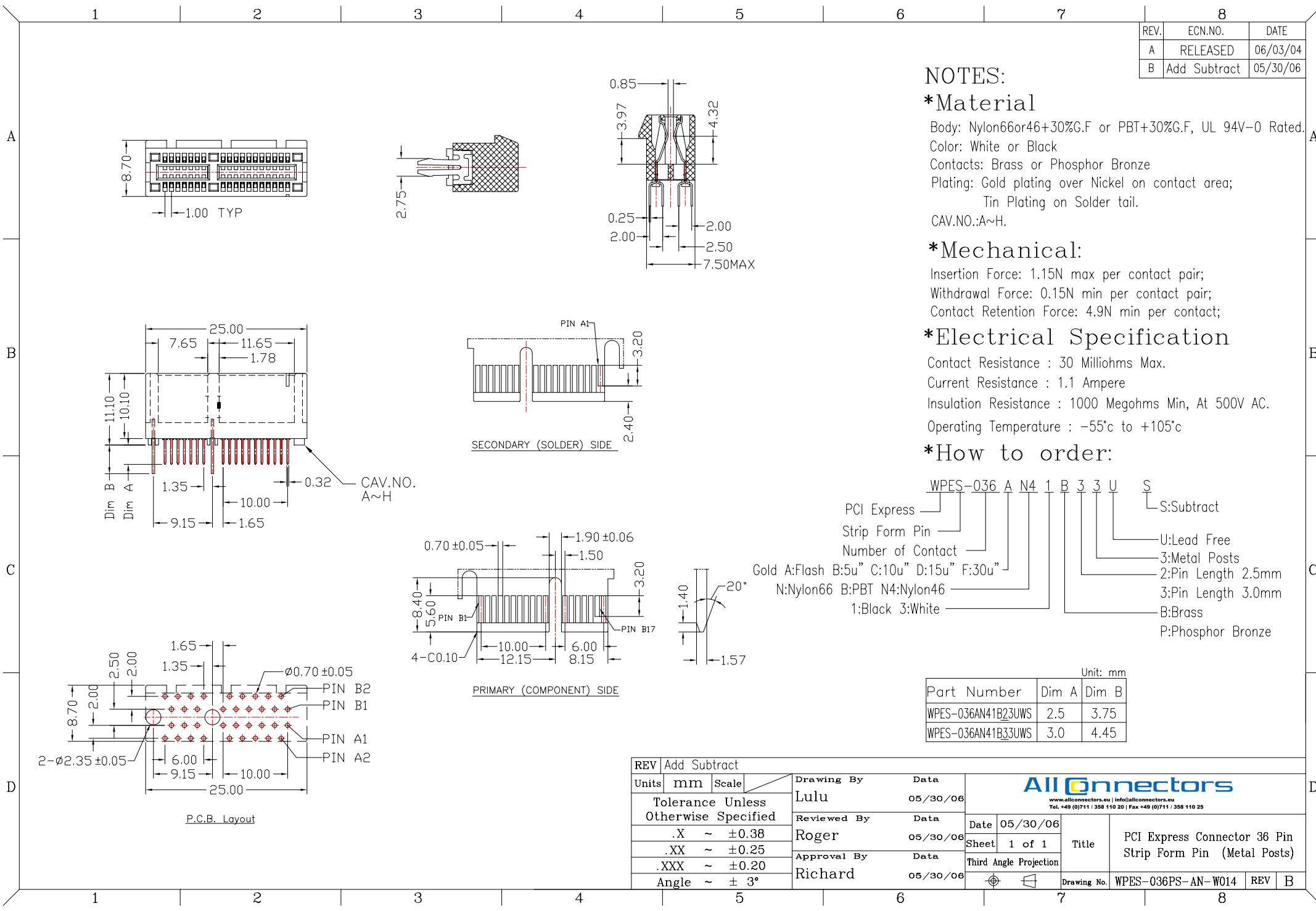
Contact Resistance : 30 Milliohms Max.
 Current Resistance : 1.1 Ampere
 Insulation Resistance : 1000 Megohms Min, At 500V AC.
 Operating Temperature : -55*c to +105*c

***How to order:**

WPES-036 A N4 1 B 3 3 U S
 PCI Express
 Strip Form Pin
 Number of Contact
 Gold A:Flash B:5u" C:10u" D:15u" F:30u"
 N:Nylon66 B:PBT N4:Nylon46
 1:Black 3:White
 S:Subtract
 U:Lead Free
 3:Metal Posts
 2:Pin Length 2.5mm
 3:Pin Length 3.0mm
 B:Brass
 P:Phosphor Bronze

Unit: mm

Part Number	Dim A	Dim B
WPES-036AN41B23UWS	2.5	3.75
WPES-036AN41B33UWS	3.0	4.45



REV	Add Subtract	Units	mm	Scale	Drawing By	Date
					Lulu	05/30/06
					Reviewed By	Date
					Roger	05/30/06
					Approval By	Date
					Richard	05/30/06



Date	05/30/06	Sheet	1 of 1	Title	PCI Express Connector 36 Pin Strip Form Pin (Metal Posts)
				Third Angle Projection	
				Drawing No.	WPES-036PS-AN-W014
				REV	B