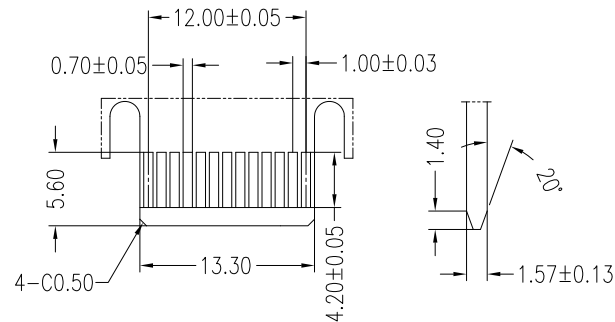
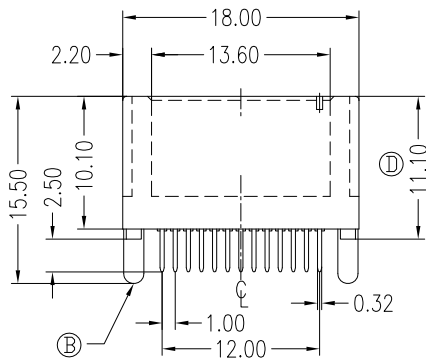
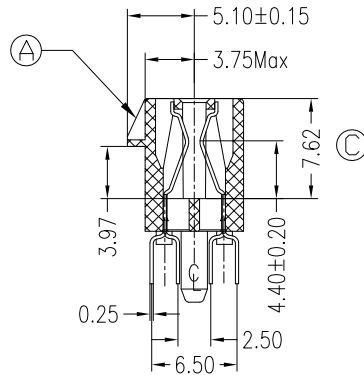
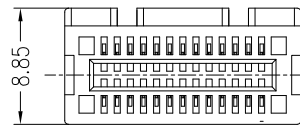


REV.	DESCRIPTION	DATE
A	RELEASED	07/07/04
D	Tin/Lead → Tin Plating Modify Dimension	10/31/07
E	Modify Dimension	03/18/08



PRIMARY (COMPONENT) SIDE

I/O PANEL DIRECTION

### NOTES

#### \*Material:

Body: Nylon66 or Nylon46, UL 94V-0 Rated.  
 Color: Black  
 Contacts: Brass.  
 Plating: Gold plating over Nickel on contact area; Tin plating on Solder Tail.

#### \*Mechanical:

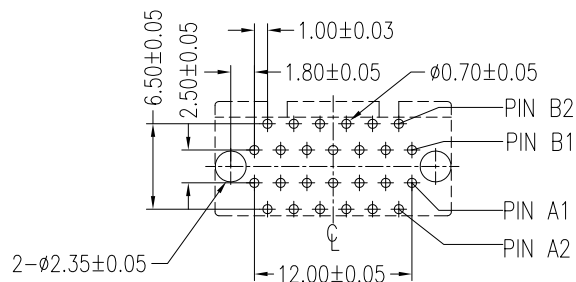
Insertion Force: 1.15N max per contact pair;  
 Withdrawal Force: 0.15N min per contact pair;  
 Contact Retention Force: 3.43N min per contact;

#### \*Electrical Specification

Contact Resistance : 30 Milliohms Max.  
 Current Resistance : 1 Ampere  
 Insulation Resistance : 1000 Megohms Min, At 500V AC.  
 Operating Temperature : -55°c to +105°c

#### \*How to order:

Series NO. WPES-026 A N4 1 B 2 2 U S  
 Number of Contacts  
 Gold A:Flash B:5u" C:10u"  
 D:15u" E:20u" F:30u"  
 N:Nylon66 N4:Nylon46  
 3:White 1:Black  
 B:Brass  
 S:Subtract  
 U:Lead Free  
 2:Plastic Posts  
 2:Pin 2.5mm 3:Pin 3.0mm



P.C.B Layout  
Top VIEW

REV.	Modify Dimension: 4.40±0.20	Drawing By		Data		 <small>www.allconnectors.eu   info@allconnectors.eu        Tel. +49 (0)711 / 358 110 20   Fax +49 (0)711 / 358 110 25</small>	
Units	mm	Scale	1:1	LULU	03/18/08		
Tolerance Unless Otherwise Specified				Reviewed By	Data	Date	03/18/08
.X	~	±0.38	Rosh	03/18/08	Sheet	1 of 1	Title PCI Express 26Pins Strip Form Pin (Plastic Post Type)
.XX	~	±0.25	Approval By	Data	Third Angle Projection		
.XXX	~	±0.20	Richard	03/18/08	Drawing No.	WPES-026PS-AN-W035	REV
Angle	~	± 3°					E